

SENTIENT ELEMENT

THE WORLD'S MOST POWERFUL
PEMF DEVICE



TOPIC	PAGE
Before You Get Started	4
Sentient Element Package	5
Precautions & Warnings	7
Starting Your Session	8
Single Coil Positions	13
Two Coil Positions	14
Ending Your Session	15

Warranty:

The Sentient Element unit and coils are under warranty against manufacturing defects for the life of the equipment and does not cover normal wear and tear. Warranty repairs or replacement will be at the discretion of Sentient Light. All repairs must be provided by a qualified service provider or the manufacturer. After the first year, shipping costs, to and from the repair provider, will be the responsibility of the purchaser.

Misuse of the Sentient Element unit voids the warranty. **ANY TAMPERING with Sentient Element electronics components will forfeit warranty.**

Disclaimer:

Contraindication for use: The Sentient Element is not to be used if you are pregnant, nursing, have a pacemaker, defibrillators or any electrical or battery-operated implants, suffer from non-pathogenic related seizures, or if you have a medical condition that may contraindicate the use of the Element and PEMF therapy. Do not use on or around internal staples, those with pins, screws, plates, replacement joints should avoid placing the coil directly on those areas. Keep coil away from head and face area if multiple amalgam fillings are present. The information in this manual has not been evaluated by the Food & Drug Administration, Canadian Food Inspection Agency, Health Canada or any other medical body. We do not aim to diagnose, treat, cure or prevent any illness or disease.

The Information shared in this manual and affiliated pages are for educational purposes only. You must consult your doctor or health care professional before acting on any content in this manual, especially if you are pregnant, nursing, taking medication or have a medical condition. The entire contents of this manual are based upon the opinions of Dr. Darrell Wolfe, unless otherwise noted. Individual articles are based upon the opinions of the respective author, who retains copyright as marked. The information in this manual is not intended to replace a one-on-one relationship with a qualified health care professional and is not intended as medical advice. It is intended as a sharing of knowledge and information from the research and experience of Dr. Darrell Wolfe and his community. Dr. Darrell Wolfe encourages you to make your own health care decisions based upon your research and in partnership with a qualified health care professional.

BEFORE YOU GET STARTED

Sentient Element - Set up

<https://youtu.be/Ylup36OoNYM>

Sentient Element - App

<https://youtu.be/oifo6CO3ImE>

Sentient Element - Info

<https://youtu.be/dL3y86dP7Dg>

Pemf And Viruses With Larry Langdon

<https://youtu.be/FoluHZJLyp4>

Contact:

Do not hesitate to call with any questions.

1 (855) 900-4544 ext. 1 - Sales

1 (855) 900-4544 ext. 3 - Product Inquiries

1 (855) 900-4544 ext. 5 - Dr. Darrell Wolfe

SENTIENT ELEMENT PACKAGE

One Sentient Element Classic



One Watertight Black Sentient Element Case

- 1) Extendable handle
- 2) Wheels
- 3) Lockable latch
- 4) Handles on 2 sides



One AC Power Cable



One Audio Cable



One Sentient Element coil and connecting cable

(Two-coil system comes with two)



One Removable, washable Sentient Element cotton coil cover

(Two-coil system comes with two)



PRECAUTIONS / WARNINGS

DO NOT cover the ventilation holes or fan on top panel of the Sentient Element.

DO NOT use high intensity settings for long periods of time. (*Over 1 Amp for longer than 30 minutes*)

DO NOT sleep during PEMF session.

DO NOT use coil on heat sensitive fabrics or materials. The heat may melt certain fabrics or materials. Wearing cotton clothing is best.

DO NOT use with alcohol or drugs.

DO NOT use while bathing or while in water.

DO NOT use on children younger than 5 years of age without consulting a qualified practitioner. Keep Sentient Element on a flat, level surface (*bottom side down*) to prevent overheating.

DO NOT run frequencies lower than 3 Hz or higher than 10,000 Hz (*10,000 Hz with the starter coil*). It may damage the Sentient ELEMENT amplifier. (*If you run lower frequencies below 25 Hz start volume very low under 20%*)

If the red light comes on, your Sentient Element is overheated.

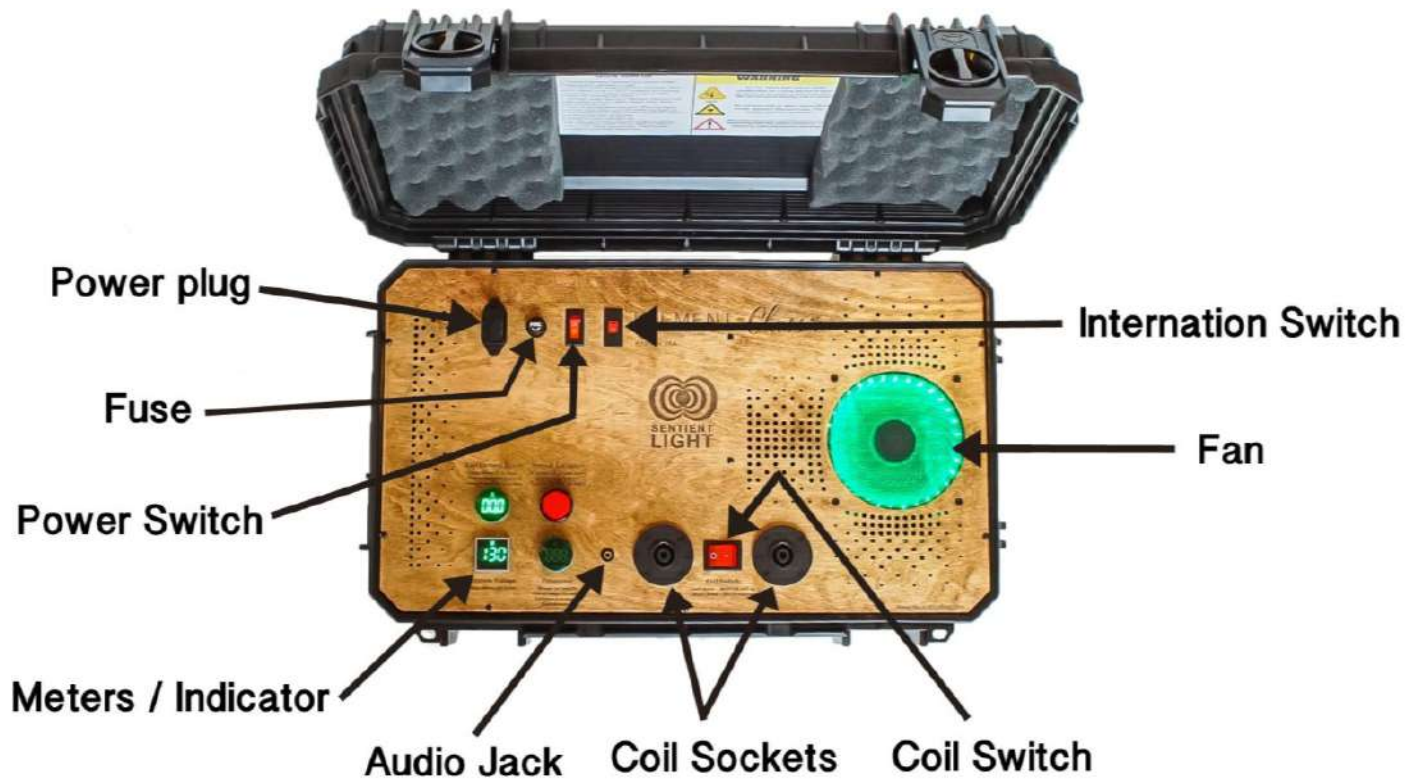
Keep all metal objects and electronic devices with a magnetic memory more than 3-4 feet away while coil is in use.

FREQUENCY SOURCES

There are many frequency sources online, ensure you are using a reputable source. Many are apps that can be downloaded on your computer, tablet, or smartphone etc. We recommend "Function Generator Pro" on the app store. Be familiar with your chosen frequency program before running a session on the sentient Element. Additionally, do not choose a frequency that exceeds the limits of the coil. The starter coil that comes with the Element Kit has a limit of 7Hz-10,000Hz. Be extra careful to avoid frequencies sources where the company does not provide the exact frequency.

For additional information, search on "PEMF (*condition*)" on the NIH pubmed.gov website for many proven studies. You may also search on scholar.google.com for frequency information.

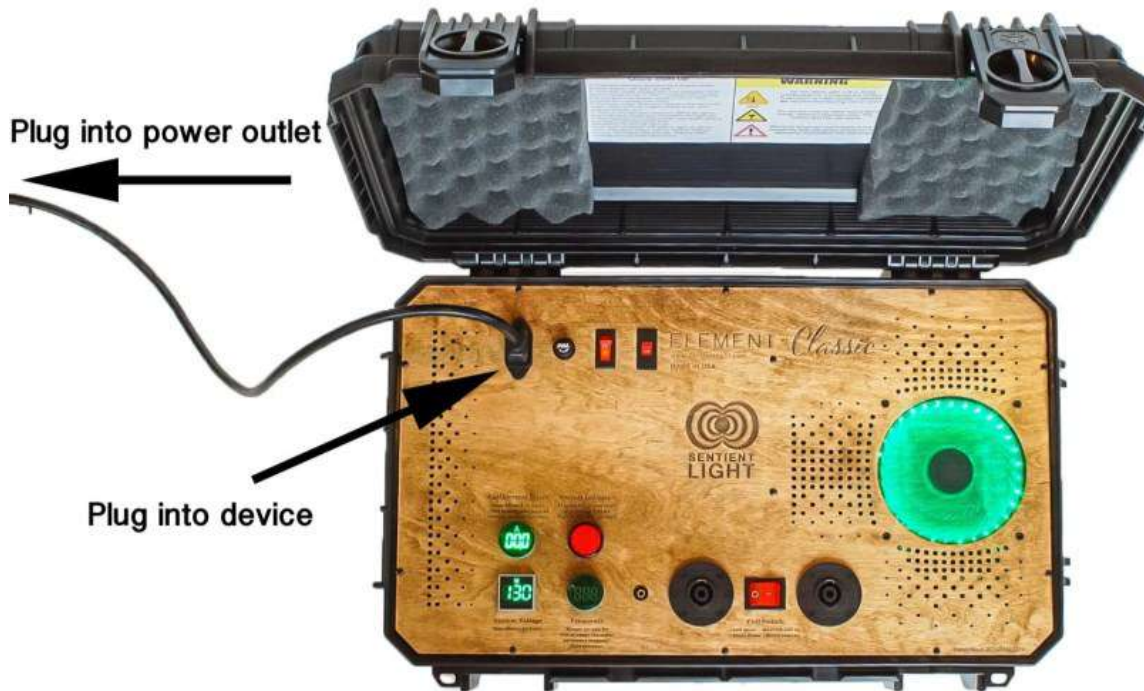
STARTING YOUR SESSION



1. Watch "How to Run Sentient Element Session"
<https://youtu.be/NFlbq48Jz5Y>
2. Place Sentient Element case on a sturdy, non-flammable, flat surface within power cable length of a wall outlet. If using an extension cord, use one rated for 15 amps.
3. Unlock latches on Element lid by twisting lock counterclockwise and pulling up on latches.

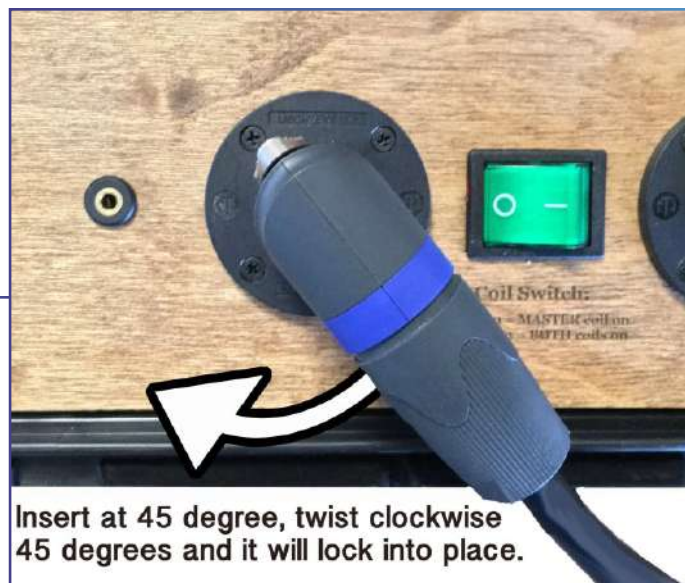


4. Open lid, remove audio and power cables, and connect power cable to power source.



5. Lay coil(s) out on treatment area - a minimum of 4 feet away from all metal including the Element unit.
6. Run the cable(s) directly from the coil(s) to the Element.
7. Plug the Coil cable(s) into the coil socket(s).

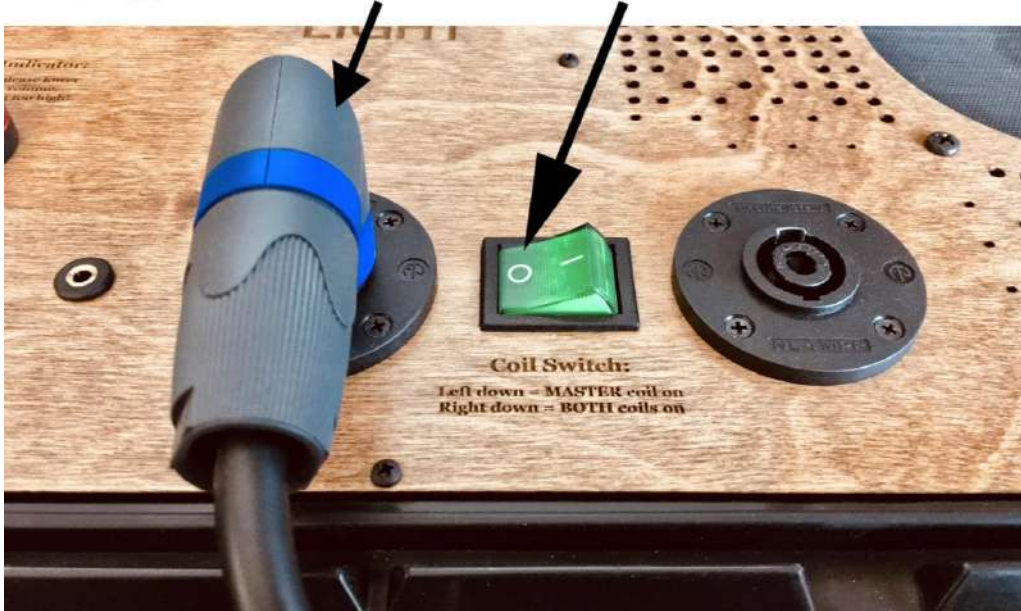
TO CONNECT: It will only go in one way. Push coil plug in at 10 O'clock, twist to the right (*clockwise*) until it clicks and latches into place as shown in the figures below. **DO NOT** force it.



If running only one coil, make sure to plug coil into left socket and push the green coil switch down to the left. If running both coils, make sure to plug in both coils and push the green coil switch down to the right as shown in the figures below.

One Coil System Set Up

Coil plugged into left socket / Green switch down on left side.



Two Coil System Set Up

Plug in both coils / Green switch down on right side.



8. Flip power switch to **ON** as seen in figures below.



Note: The fan and fanlights will turn on. You should hear fans running inside the machine. Meters will light up as shown in the figure below:


At start, amp meter will light up and read between 00.0 - 00.8. It is normal for the numbers to jump around.
(Protect indicator should only light up when it is overheated)
(Frequency meter will run when you play a frequency)
At start, volt meter will read 120 - 135 volts.

Coil Current:
Stay below 7.0 Amps.
Coil heat accumulates as current reading increases.

Protect Indicator:
If turns ON, please lower application volume.
Unit is running too high!

System Voltage:
Stay above 112 Volts.

Frequency:
Range: 30-999 Hz
Out of range the meter becomes a magnetic field detector.



Plug one end of the audio cable into your frequency source device (*i.e. iPad, iPhone, MP3 player, or computer etc.*) and plug the other end into Sentient Element audio input socket as shown in figure below.



9. Plug one end of the audio cable into your frequency source device and plug the other into Sentient Element audio input socket as show in figure below. Audio cable connects to smartphones, MP3 players, tablets, labtops and most other frequency source devices. If you have a new generation Apple product however, you may need a dongle.
10. **GET COMFORTABLE!** Most people hug the coil, however, when targeting a specific localized problem, it is recommended that the user place the coil on the part of the body that is affected. Make the user environment as stress-free and relaxing as possible. Tension and stress decrease the effectiveness of the session. Examples of different positions to place coil(s) are shown under " Examples of Coil Positions "
11. Push the play button on your source device to begin your session.
12. Check the power and frequency meters to test the unit and coil functionality.

SINGLE COIL POSITIONS



TWO COIL POSITIONS



one under elbow and other over abdomen



it is most effective when the coil is placed as close as possible to the area you want to treat

SESSION NOTES

If the weight of the coil is uncomfortable, use an extra towel to pad it.

Unit will automatically shut off and turn the red light on if it overheats. (As shown in the figure below.)

The unit will restart when the machine cools 15 degrees. DO NOT turn the power switch off, as the fans will continue to run and cool the unit faster. Let the unit cool on its own. Make sure nothing is blocking the fan ventilation and air holes on the top panel.

Protect indicator is on. (Wait for it to cool down. Run with lower power and check if coils are getting to hot)

Amp meter will go back to 00.0 - 00.8.

Volt meter will also go back to its start reading 120 - 135.

Coil Current:
Stay below 7.0 Amps. Coil heat accumulates as current reading increases.

Protect Indicator:
If turns ON, please lower application volume. Unit is running too high!

System Voltage:
Stay above 112 Volts.

Frequency:
Range: 30-999 Hz
Out of range the meter becomes a magnetic field detector.

ENDING YOUR SESSION

1. When the session is complete, unplug audio source.
2. Pull silver metal tab up on top of coil plug and twist cable plug to the left (*counter-clockwise*) until it will pull out as shown in figure below. **DO NOT** force it.



3. Wait 15-20 minutes before turning the power OFF. The fans help the unit cool properly.
4. When cool, switch Power to OFF and unplug from power source.
5. **DO NOT** store Coil(s) inside the Sentient Element case. It may cause damage to the coil as well as the Element top panel and meters.
6. Store unit and coil(s) in a cool, dry place.
7. Don't forget to follow up each session by drinking plenty of water. Remember your body is working hard and needs some tender love and care.

SESSION TYPES & MORE ON FREQUENCIES

There are two basic types of PEMF sessions.

1. PEMF can be used to debilitate pathogens that cause harm to the body's systems and tissues. i.e. bacteria, viruses, etc.
2. PEMF sessions can also be used for re-building cellular structure and regeneration. Everybody needs a pick up and this is a great way to help the body's natural processes.

When selecting the appropriate frequencies and power levels, always keep the following in mind: The lower the frequency, the lower your power must be in order to prevent overheating. For instance, when using 20HZ, the power (*volume on your device*) may need to be around 60% to avoid overheating, however when using 306HZ the power may be at 100% because there is a low risk of overheating.

POWER & FREQUENCY METERS

NOTE: The purpose of these meters is to act as EMF detectors.

AMP METER: The amp meter shows the Sentient Element's power output. As the user increases or decreases the volume, the amp meter will change accordingly. For extended usage and to prevent overheating, keep the Sentient Element below 1A as shown on Figure A on the next page.

VOLT METER: When the Sentient Element is powered up, the voltage meter will likely read 130V. As the frequency rises, the voltage will too.

Hz METER: The Frequency Meter displays the frequency going through the coil(s) which is measured in HZ. Depending on the frequency and power, the frequency meter may not display the exact frequency and it may just flash instead, this is perfectly normal. This is more frequent when running low frequencies.

As the frequency rises, the voltage will rise, and the amps will decrease. As the frequency lowers, the voltage will decrease, and the amps will increase as shown from figure A and B (*PAGE 16*).

FIGURE A

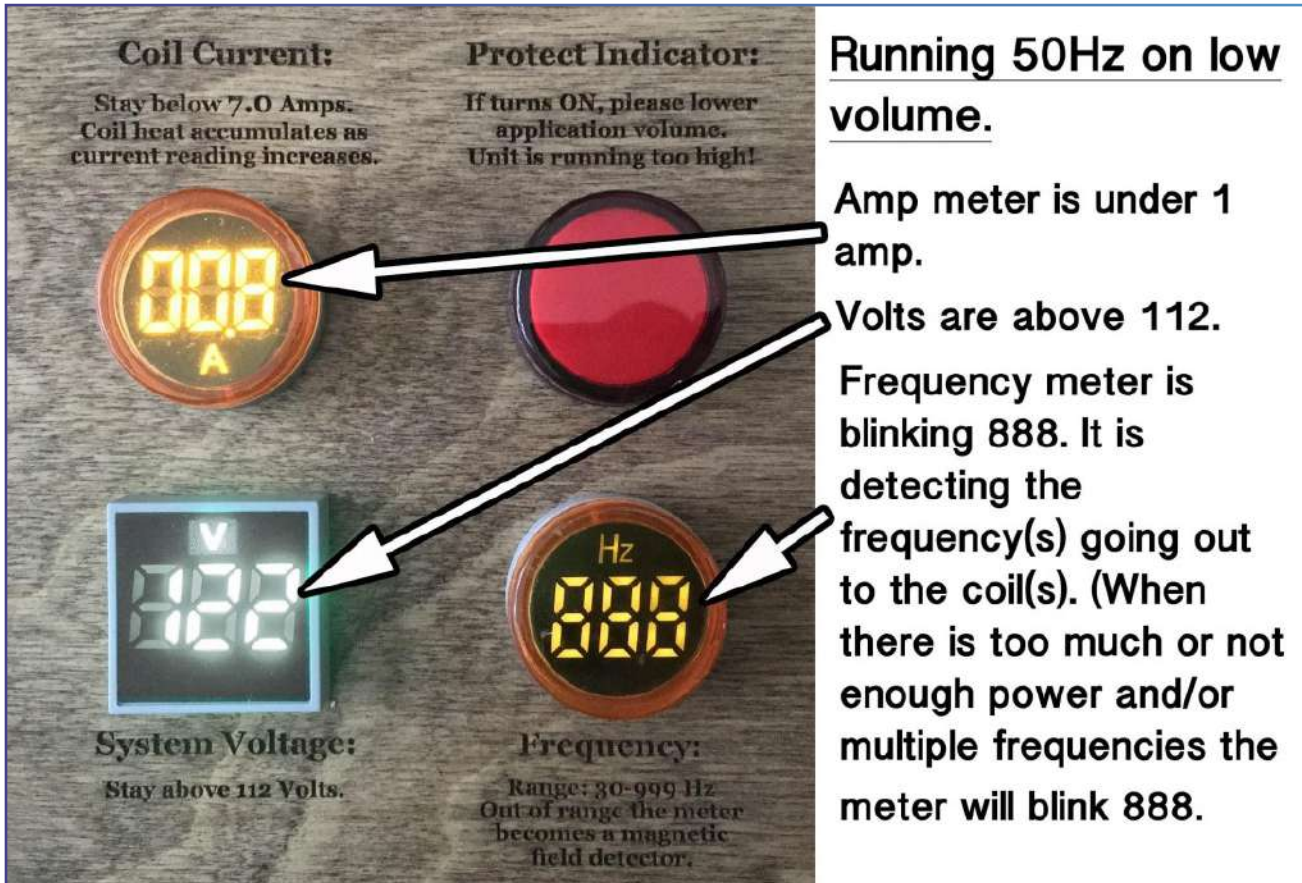
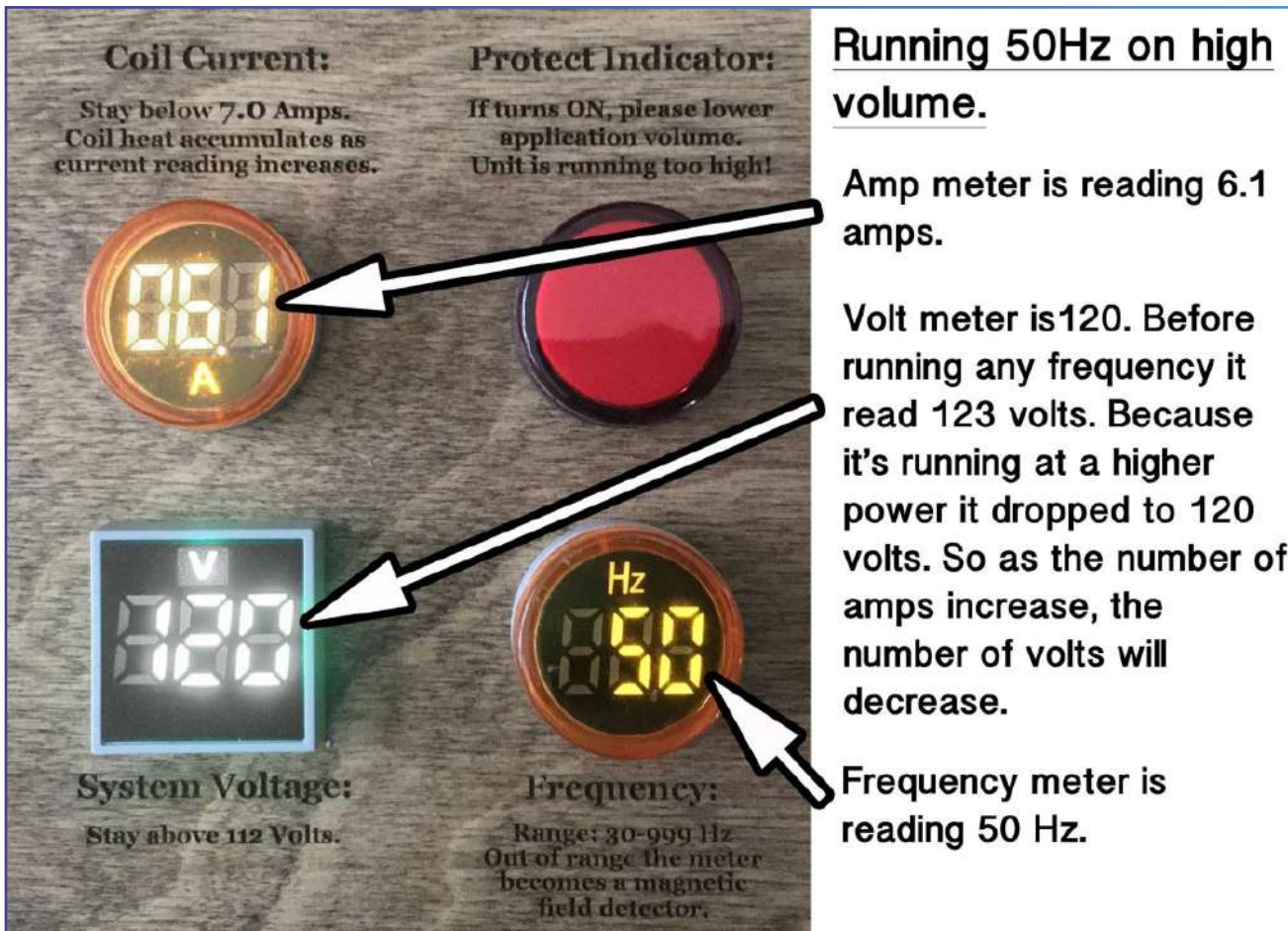


FIGURE B



INDEX | FREQUENCIES FOR CONDITIONS

FIRST LETTER OF CONDITION NAME	PAGE NUMBER
A	19
B	21
C	23
D	28
E	30
F	31
G	32
H	33
I	35
J	37
K	37
L	38
M	39
N	42
O	42
P	43
Q	47
R	47
S	48
T	51
U	52
V	52
W	53
X	53
Y	53
Z	53

A

Abdominal inflammation - 2720, 2489, 2170, 2000, 1865, 1800, 1600, 1550, 880, 832, 802, 787, 776, 727, 660, 465, 450, 444, 440, 428, 380, 250, 146, 125, 95, 72, 20, 1.2

Abdominal pain - 10000, 3000, 95, 3

Abscesses (also use *Staphylococcus aureus* and see *Listeriose*) - 2720, 2170, 1865, 1550, 880, 802, 787, 727, 500, 444, 190

Abscesses #1 - 2720, 2170, 1865, 1550, 880, 802, 787, 760, 727, 690, 660, 500, 465, 450, 444, 428, 190

Abscesses secondary - 1550, 802, 760, 660, 465, 450, 444, 428

Acidosis (*hyperacidity. Also use a calcium magnesium supplement long term*) - 10000, 880, 802, 787, 776, 727, 146, 20

Acne (*run 564 for 6 min*) - 2720, 2170, 1800, 1600, 1550, 1552, 1500, 802, 880, 778, 787, 760, 741, 727, 660, 564, 465, 450, 444, 428

Aconite (*used to stimulate lymphocyte production*) - 3347, 5611, 2791

Actinobacillus (*a potentially pathogenic bacteria found in mammals - 773*, 776*, 778*, 822**) - 488, 565, 672, 674, 678, 773, 766, 768, 776, 777, 778, 822, 885, 887, 7877, 9687, 42664, 42666, 46668, 46787

Actinomyces israelii (*a bacterium normally found in the bowel and throat that can cause deep, pus filled holes in tissue. Also see Streptothrix, 222*, 262*, 488*, 567*, 7880**) - 23, 222, 262, 2154, 465, 488, 567, 7880, 10000, 787, 747, 727, 20, 660, 690, 160, 73, 1.1

Actinomycosis (*use Streptothrix*)

Acupuncture disturbance field (*scar focus*) - 5.9

Acute pain - 3000, 95, 10000, 1550, 802, 880, 787, 727, 690, 666

Adenoids - 1550, 802, 880, 787, 776, 727, 444, 20, 428, 660, 2720, 2170, 14, 333, 523, 768, 786, 428, 1865, 590, 690, 780, 807, 810, 1570, 2000

Adenoma cervical (*epithelial tumor of the cervix that can be either benign or malignant. Also see Cancer.*) - 433

Adenovirus (*a virus that can cause colds/flu and infections in the lungs, stomach, and intestines*) - 333, 523, 666, 786, 768, 959, 962

Adenovirus 36 (*AD-36 may be related to weight gain in some cases*) - 8875, 6140, 5859, 5797, 5219

Adenovirus comp - 10000, 7767, 7762, 7702, 7009, 7001, 6989, 5000, 4868, 2720, 2050, 1500, 1395, 1062, 1060, 1034, 1009, 969, 968, 962, 959, 960, 952, 951, 942, 880, 1550, 802, 787, 768, 728, 690, 660, 555, 523, 522, 1865, 444, 333, 300, 180, 160, 125, 95, 72, 60, 48, 26, 20

Adenovirus HC - 28729.05, 16628.88, 18471.00, 18670.15, 19566.32, 1407.93, 827.90, 919.62, 929.53, 974.15

Adhesions - 2720, 2170, 1550, 802, 880, 787, 776, 760, 727, 660, 190

Adnexitis (*swelling of the ovaries or Fallopian tubes*) - 440, 441, 522, 572, 3343, 3833, 5312

Adrenal stimulant - 10, 20, 2250

Adynamia geriatric (*fatigue of age*) - 410, 220, 100, 60, 27.5

Aflatoxin (*a liver-damaging toxin produced by certain food molds*) - 344, 510, 943, 474, 476, 568

Aflatoxin HC - 438.74, 466.01, 9359.97, 8812.31

African trypanosomiasis - 656, 988, 780

Agyfla HC - 3534.88, 175.99

AIDS 1 (*not for use in U.S. see HIV*) - 2489, 465, 727, 787, 880, 1550, 1500, 1.2, 31000, 31750, 34750

AIDS 2 - 1.44, 1550, 1500, 249, 418, 727, 787, 880, 2489, 3100, 3175, 3475

AIDS Kaposi sarcoma (*use Cancer Kaposi sarcoma*)

AIDS secondary (*use 1113 for 12 min, 2128 for 16 min, 6121 for 21 min, 33 for 1 min*) - 1113, 2128, 6121, 33

Akathisia - 230, 7.83, 3

Alcoholism - 10000

Allergy (*also see Pertussis*) - 10000, 7344, 5000, 1550, 1234, 740, 880, 835, 787, 727, 500, 330, 160, 30, 3

Allergy 1 - 10000, 1865, 880, 787, 727, 690, 660, 555, 522, 473, 444, 330, 290, 146, 125, 95, 72, 33, 20, 3

Allergy pollen TR (*pulse 64 75, converge 2 0.03125, dwell 500*) - 116113, 119061.03, 119441.8

Alopecia (*loss of hair*) - 10000, 30000, 5000, 2720, 2170, 1552, 880, 800, 787, 727, 465, 330, 146, 95, 28, 20, 3

Alpha streptococcus HC - 18919.09, 18670.15, 941.93, 929.53

ALS 1 (*Amyotrophic lateral sclerosis, possibly caused by mycoplasma fermentans. Also use MS and see Echo virus, Coxsackie, Herpes 6, Bartonella, and Lyme freqs. Use 2900 for 30 min*) - 2900, 864, 790, 690, 610, 470, 484, 986, 644, 254

ALS 2 (*Potential causative viruses*) - 5000, 3636, 2632, 1850, 1500, 1488, 1422, 1189, 1044, 922, 868, 845, 822, 788, 776, 766, 742, 733, 721, 676, 654, 625, 620, 607, 608, 609, 610, 611, 612, 613, 595, 515, 487, 461, 435, 423, 380, 322, 283, 232, 144, 136, 20

ALS 3 (*use 2900 for 60 min*) - 2900

ALS 4 (also use for MS) - 10000, 5000, 2900, 2750, 2700, 2145, 938, 862, 841, 777, 766, 741, 739, 688, 682, 660, 572, 532, 520, 477, 442, 433, 344, 343, 342, 338, 324, 322, 253, 242, 112

ALS 5 (use 2900 for 20 min) - 2900, 986, 864, 790, 728, 690, 660, 644, 980, 692, 610, 484, 254

Alternaria tenuis (a fungus associated with lung ailments) - 853, 304

Alzheimers 1 (also see ALS sets) - 430, 620, 624, 840, 866, 5148, 2213, 19180.5, 742.4, 303, 23.2, 3773.3, 943.3, 471.66, 470.9, 941.8, 3767.3

Alzheimers 2 - 19180.5, 2213, 5148, 866, 840, 624, 620, 430

Alzheimers TR - 430, 620, 624, 866, 5148, 2213, 1918, 742.4, 303, 23.2, 2900, 864, 790, 690, 610, 470, 484, 986, 644, 254, 30, 33, 6

Amenorrhea (absence of menstruation) - 10000, 880, 1550, 802, 787, 760, 727, 465, 20

Amoeba (a single celled, sometimes infectious microorganism) - 310, 333, 532, 732, 769, 827, 1522

Amoeba hepar abscess (liver abscess caused by amoebic infection) - 344, 605, 510, 943

Amoebic dysentery (use *Entamoeba histolytica*)

Amyotrophic lateral sclerosis (use ALS)

Anal itching (also use *Parasites enterobiasis* and see *Parasites general set*) - 10000, 880, 787, 760, 727, 465, 125, 120, 95, 72, 444, 1865, 20, 773, 826, 827, 835, 4152

Anaphylaxis - 10000

Anaplasma marginale HC - 19267.60, 959.28, 21010.14, 1046.03

Aneurysm - 880, 787, 760, 727, 465, 125, 95, 72, 444, 1865, 20, 727

Angina quinsy (inflammation of lymph gland in throat) - 787, 776, 727, 690, 465, 428, 660

Angina pectoris - 3, 230, 2720, 2170, 1800, 1600, 1500, 880, 832, 787, 776, 727, 465, 444, 1865, 125, 95, 72, 20, 660, 7.83

Ankylosing spondylitis (arthritis of the spine. Use 326 longer periods after buildup) - 3000, 95, 1550, 802, 880, 787, 776, 727, 650, 625, 600, 28, 10, 35, 28, 7.69, 1.2, 110, 100, 60, 428, 680, 326

Anosmia (loss of smell) - 20, 10000

Anthrax (also see *Bacillus anthracis HC*) - 4000, 16655, 1370, 1365, 930, 900, 768, 633, 500, 420, 414, 400, 273, 224, 129

Anthrax 1 - 644, 643, 642, 639, 638, 637, 634, 633, 632, 629, 628, 627, 624, 623, 622

Antiseptic (use *General antiseptic*)

Anxiety 1 (General anxiety disorder. Use 1.5 for 3 min, 6.8, 7.8

for 5 min, 95 for 3 min, 10000 for 5 min) - 1.5, 6.8, 7.8, 95, 10000

Apoplexy stroke paralysis - 40, 1800, 880, 787, 727, 650, 625, 600, 125, 95, 72, 20, 1865, 522, 428

Appendicitis (Seek medical help! If micro perforation has occurred, infection must be eliminated before drinking any water or eating. Even a few drops of water may be fatal) - 1550, 802, 880, 787, 727, 444, 380, 190, 10, 650, 444, 522, 125, 95, 72, 20, 522, 146, 440, 450

Appendicitis 1 - 1770, 1570, 880, 807, 804, 1550, 802, 787, 728, 690, 660, 622, 650, 625, 600, 450, 1865, 444, 440, 380, 190, 146, 125, 522, 95, 72, 20, 10

Appetite (lack of) - 465, 444, 1865, 125, 95, 72, 20, 10000, 880, 787, 727

Arenas tennus - 667

Arnica (a topical healing herb) - 1042, 1032

Arrhythmia heart TR (also use magnesium, CoQ10, and fish oil) - 696, 7.83

Arsenic alb (homeopathic cell salt) - 562

Arteriosclerosis (hardening of the arteries; regeneration takes time. Also try nanobacteria, coxsackie, and CMV freqs) - 10000, 2720, 2170, 1800, 1600, 1500, 880, 787, 776, 727, 20

Arthritis A - 1500, 727, 784, 880

Arthritis arthralgia due to gout - 9.39

Arthritis (arthrosis and parathyroid disturbances affecting calcium metabolism) - 9.6

Arthritis (focal origin gastrogenic tonsiltogenic and paresis) - 9.39

Arthritis general (use *Strep pneumonia* and *Mycoplasma general* if needed) - 10000, 5000, 2720, 1664, 1550, 1500, 962, 880, 802, 800, 787, 776, 766, 727, 688, 683, 650, 625, 600, 120, 20

Arthritis 1 (use 1.5 for 10 min, 120 for 20 min) - 10000, 5000, 3176, 3000, 2720, 1664, 1550, 1500, 880, 802, 787, 770, 728, 690, 660, 512, 250, 230, 120, 100, 80, 60, 40, 30, 28, 26, 25, 20, 10, 9.4, 9.39, 7.7, 7.69, 3, 1.5, 1.2

Arthritis rheumatoid (Cause could be bacteria like strep pneumoniae, chlamydia pneumonia, mycoplasma fermentans, or dental bacteria which must be addressed too. Also try *General antiseptic* and *Parasites roundworms general* if no response. Use 766 longer periods after building up.) - 250, 1.2, 650, 625, 600, 787, 727, 262, 776, 766

Arthritis secondary - 2720, 1000, 1500, 770

Asian grippe A - 516, 656, 434

Aspergillus flavus (mold found on corn, peanuts, and grain that produces aflatoxin) - 1823, 247, 1972

Aspergillus general - 1972, 1823, 758, 743, 697, 524, 374, 339, 247

Aspergillus glaucus (*blue mold occurring in some human infectious processes*) - 524, 758

Aspergillus niger (*common mold that may produce severe and persistent infection*) - 374, 697

Aspergillus terreus (*mold occasionally associated with infection of the bronchi and lungs*) - 743, 339

Asthma (*also see Liver support and Parasites ascaris and use Mycoplasma general if needed*) - 7344, 3702, 3672, 2720, 2170, 1800, 1600, 1500, 1283, 1234, 1233, 880, 787, 727, 522, 444, 146, 125, 95, 72, 20, 0.5

Asthma 1 - 1283, 1233, 4.7

Asthma 2 (*all frequencies for 5 min*) - 1234, 3672, 7346, 727, 787, 880, 10000, 47, 120

Asthma V - 3125, 3124, 890, 886, 871, 822, 782, 756, 712, 665, 633, 521, 515, 487, 434, 411, 322, 263, 172, 128

Astrocytoma (*use Cancer, astrocytoma*)

Ataxia (*incoordination of muscles. Slow results in some cases*) - 2720, 2170, 1800, 1600, 1500, 880, 787, 776, 727, 650, 625, 600, 444, 1865, 125, 95, 72, 20

Ataxia spastic - 9.19, 8.25, 7.69

Atherosclerosis (*commonly present microbes in plaque are herpes zoster and Chlamydia pneumonia, this set combines the two. Also use magnesium and vitamin C to help reduce mineral deposits*) - 7543.4, 7520.5, 4710.5, 3773.3, 3760.3, 1886, 1880, 943.3, 940, 620, 479, 471.66, 470.9, 941.8, 3767.3, 7160, 3343, 2431, 2323, 1577, 1544, 40887, 958, 934, 787, 786, 738, 718, 716, 686, 668, 643, 576, 574, 573, 572, 563, 554, 542, 453, 446, 436, 425, 423, 411, 345, 333, 223, 134

Athletes foot (*also see Epidermophyton floccinum, Tinea, and Trichophyton rubrum freqs. Use all freqs for 5 min*) - 20, 379, 727, 787, 880, 5000, 644, 766, 464, 802, 1552, 9999, 752, 923, 3176, 304

Atmenic Alb - 562

Attention Deficit Disorder (*Probably important to avoid preservatives, aspartame, dyes, MSG, and other potential toxins, plus limit sugar and starches but ensure adequate protein and good oils in the diet. Try Shigella, Chlamydia pneum., and General antiseptic*)

Autism (*must do mercury and aluminum detox if a problem. Try Measles w vaccine.*)

Autointoxication - 522, 146, 1550, 10000, 800, 880, 787, 727, 20

B

Babesia - 76, 570, 1583, 1584, 432, 753, 5776

Bacillinum (*homeopathic nosode*) - 132, 423, 432, 785, 853, 854, 921, 1027, 1042, 1932

Bacillus anthracis HC - 19665.89, 18122.49, 18321.64, 19317.38, 961.76, 912.18, 902.27, 979.11

Bacillus cereus - 18645.26, 928.29

Bacillus Coli Rod Form - 8020, 800, 683, 417, 318

Bacillus Coli Virus - 17220, 11103, 8581, 2872, 1722, 1552, 770

Bacillus infections (*B. coli, B. coli rod*) - 787, 880, 802, 727, 1552, 800

Bacillus licheniformis - 2655, 21554

Bacillus subtilis (*can cause conjunctivitis*) - 432, 722, 822, 1246

Bacillus subtilis niger HC - 19168.02, 18919.09, 18670.15, 954.32, 941.93, 929.53

Bacillus thuringiensis - 520, 2551, 902, 1405

Backache 1 (*if no relief from these, use kidney stimulation freqs, magnesium and B6, and drink plenty of water. Use 212 and 305 for 6 min and 33 for 5 min*) - 10000, 1550, 880, 802, 787, 760, 727, 305, 212, 41.2, 33

Backache 2 - 787, 784, 776, 728, 727, 465, 432, 9.6, 9.4, 9.3, 7.7, 7.6, 3, 0.5

Backache and spasms 1 - 120, 212, 240, 424, 465, 528, 760, 727, 787, 880, 1550, 2112, 5000, 10000

Backache chronic lower 1 (*use with back toward tube. Use 728 for 30min*) - 728

Bacteria lactis nosode - 512, 526, 798, 951, 5412

Bacterial capsules HC - 20786.10, 17923.34, 1034.88, 892.35

Bacterial infections general (*if bacterial infection is chronic and the type is accurately diagnosed and neither frequencies nor antibiotics are effective long term, also use Parasites general and roundworms sets. Also see General antiseptic and specific types.*) - 20, 465, 866, 664, 690, 727, 787, 832, 800, 880, 1550, 784

Bacterium coli (*a type of E. coli normally found in the intestines, water, milk, and soil that is the most frequent cause of urinary-tract infections and a common cause of wound infection*) - 642, 358, 539

Bacterium coli commune combination - 282, 333, 413, 957, 1320, 1722

Bacteroides fragilis (*use with Parasites ascaris set*) - 633, 634, 635, 636, 637

Bacteroides fragilis HC - 16180.80, 16230.58, 808.07, 805.59

Bad breath (*use Halitosis*)

Bakers Yeast allergy (*homeopathy preparation*) - 775, 843, 1000

Balantidium coli HC (*cysts. B. coli is the largest ciliated protozoon found in humans and can cause a severe colitis with ulcerations*) - 22902.05, 1140.23

Bantis syndrome (*Ailment in which blood vessels between the intestines and the liver become blocked, leading to congestion of the veins, an enlarged spleen, bleeding of the stomach and intestines, cirrhosis of the liver, and blood cell destruction.*) - 1778

Barley smut (*homeopathic preparation for an allergen*) - 377, 224, 1447

Barretts esophagus 1 (*changes in esophageal cells usually caused by acid reflux. use 2127.5 for 6 min*) - 10000, 880, 802, 787, 776, 676, 727, 20, 146, 2127.5

Bartonella henslae (*virus which causes cat scratch fever*) - 364, 379, 645, 654, 786, 840, 842, 844, 846, 848, 850, 857, 967, 6878, 634, 696, 716, 1518

Basidiomycetes - 751

BC G Vaccine - 277, 768, 832, 725

Bed wetting (*enuresis. See also Parasite general, pinworm, and ascaris freqs*) - 1550, 880, 802, 787, 727, 465, 120, 112, 7.83

Bedsores - 880, 1550, 802, 787, 784, 728, 727, 465, 20, 1.2, 73

Bells Palsy 1 (*also see Herpes general*) - 2.4, 3, 3.9, 7.83, 20, 27.57, 33, 35, 40, 47.5, 57.5, 72, 90.88, 110, 125, 194, 222, 304, 393.5, 464, 565.5, 600, 625, 650, 727, 776, 787, 833, 880, 932.5, 1250

Bermuda smut (*homeopathic preparation for an allergen*) - 422, 767, 847, 971, 644, 780

Besnoitia HC (*protozoan taken from lung sect.*) - 17823.77, 887.39

Beta streptococcus HC - 19168.02, 954.32

Bile duct 1 (*spasms and pain*) - 2, 2.2, 2.5, 2.7, 3.2, 3.5

Biliary cirrhosis (*an inflammatory condition in which bile flow through the liver is obstructed*) - 381, 514, 677, 2271, 1250, 170, 715, 774, 776

Biliary headache - 8.5, 3.5

Biliousness - 1550, 802, 10000, 880, 832, 787, 727, 465

Bilirubin (*a bile pigment that may result in jaundice in high con-*

centrations. See also Liver support) - 717, 726, 731, 863, 9305, 649, 734

Black widow spider - 376, 728

Bladder and prostate complaints - 2050, 880, 1550, 802, 787, 727, 465, 20, 9.39

Bladder TBC - 642, 771, 360, 726, 724

Blastocystis hominis (595*, 13469*) - 365, 595, 844, 848, 1201, 1243, 5777, 11425, 11841, 11967, 13145, 13469, 21776

Blepharisma - 3120

Blepharisma HC - 20238.44, 1007.61

Blood diseases - 880, 787, 727

Blood pressure high (*use Hypertension*)

Blood pressure low (*use Hypotension*)

Blue cohosh (*a healing herb*) - 364

Boils (*use Furunkulosis*)

Bone disease and periodontal disease (*see Osteo freq. Use 728 for 15min. combine with adequate nutrition, especially protein and essential fatty acids, and minerals, especially calcium and magnesium*) - 47.5, 1800, 1600, 650, 625, 600, 880, 787, 776, 728

Bone regeneration (*combine with adequate nutrition, especially protein, and minerals, especially calcium and magnesium*) - 2720, 10000

Bone spurs (*also use mineral supplement plus high dose bromelain and water*) - 1.2, 120, 250

Bone trauma (*cuts, fractures*) - 380, 1550, 802, 10000, 880, 787, 727, 2720

Bordertella pertussis HC - 16479.52, 820.47

Borrelia (*use Lyme disease*)

Borrelia burgdorferi HC (*causes Lyme disease, see also Lyme disease*) - 18919.09, 941.93

Botrytis - 1545

Botrytis cinereas - 1132, 212

Botulinum (*a bacillus that causes an often fatal form of food poisoning*) - 518, 533, 639, 172, 1372, 691, 683, 253, 435, 668, 775, 2688, 660, 690, 727, 802, 1550, 831, 1552, 10000

Brachial neuralgia - 0.5

Brain beta stim TR (7.83 run at duty 5, 22 and 19.5 run at duty 30 and pulse 7.83 50) - 7.83, 22, 19.5

Brain tumor (*use specific type : Cancer, droglioma, astrocytoma, and or glioma*)



Branhamella Moraxella catarrhalis - 2013, 579, 581, 687, 770, 772, 775, 778, 2013

Branhamella Neisseria catarrhalis HC - 19715.68, 981.59

Breast fibroid cysts (*also use black walnut hull capsules and mixed tocopherols if possible*) - 1550, 1384, 880, 802, 787, 776, 727, 690, 666, 267

Breast tumor benign TR (*also include sweep from 19351.563 to 10406.25 by .03125 dwell 1*) - 174, 482, 785, 1132, 5311, 3965, 405, 633, 191, 178, 731, 6646, 178, 739.8, 2959.4, 1234, 3702, 3672, 7344, 7760, 10357, 10380

Breathing deep - 1234, 3702, 3672, 7344, 7760

Brights syndrome (*use Nephritis*)

Bronchial asthma (*use Asthma*)

Bronchial pneumonia (*use Pneumonia, bronchial*)

Bronchiectasis (*chronic dilatation of the bronchi*) - 342, 510, 778

Bronchitis - 7344, 3672, 1234, 880, 743, 727, 683, 464, 452, 333, 72, 20, 9.39, 9.35

Bronchitis secondary - 776, 766, 688

Bronchopneumonia borinum (*use Pneumonia, bronchial*)

Brown recluse spider bite (*also use a lot of Echinacea and vitamin C*) - 724, 884, 1830, 3260, 30008

Brucella abortus (*undulant fever or Bang's bacillus, found in cattle*) - 1423

Brucella melitensis (*form of Brucella found in goats and sheep*) - 748, 643, 695

Bruises - 9.1, 110, 10000

Bubonic plague (*use Versenia pestis*)

Bubonic plague secondary infections - 880, 787, 727, 20

Bunion pain - 20

Burns - 190, 10000, 880, 787, 727, 465, 200

Bursitis (*May be caused by any number of organisms and viruses; experiment with arthritis frequencies as well.*) - 880, 787, 727

BX Virus (*use Cancer BX virus*)

BY Virus (*use Cancer BY virus*)

Caeliacia - 674

Calcifications - 326

Calming - 6000

Campylobacter (*bacteria causing sudden infectious diarrhea in newborns, 732*, 1633*, 333**) - 732, 733, 1633, 1834, 2222, 786, 768, 523, 333, 378, 705.86, 2823.5

Campylobacter fetus HC (*smear*) - 18321.64, 912.18

Campylobacter pyloridid HC - 17674.41, 879.96

Cancer (*Basic comprehensive set. A complete set like this, or rotation of the general cancer sets, or Rife Technology's intensive carcinoma and sarcoma banks are used as Basic sets. Sets listed below for specific types are to be used in addition to basic sets. Also add frequencies determined to be beneficial from scans. Increase run times on frequencies thought to be most effective as detox allows. Don Tunney now includes E coli 1 frequencies with Resonant Light's intensive regimens. Also use 11,780,000Hz if device is capable. James Bare states that 10025 may be master frequency for cancer in general, 10026 for sarcoma. Use + and - 3Hz sweep about 10025, building up to longer periods like 5 min per freq, 2128**) - 10000, 11780, 21275, 17034, 11430, 10025, 6766, 6064, 5000, 3713, 3176, 3040, 2950, 2876, 2790, 2720, 2452, 2189, 2182, 2128, 2127, 2084, 2048, 2008, 1604, 1552, 1489, 880, 854, 800, 784, 776, 766, 728, 690, 683, 676, 666, 524, 464, 333, 120, 20

Cancer adenocarcinoma - 47, 2182, 2219, 832, 2084, 2127, 2160, 2452, 2876

Cancer adenoma - 433

Cancer astrocytoma (*common tumor of brain and central nervous system*) - 857, 9.19, 8.25, 7.69, 2170, 543, 641, 2127, 880, 690, 666

Cancer bladder secondary (*use Parasites, schistosoma*)

Cancer bladder TBC (*transitional bladder carcinoma*) - 642, 771, 360, 726, 724

Cancer breast - 3072, 2950, 2876, 2191, 2189, 2187, 2184, 2182, 2152, 2128, 2127, 2120, 2116, 2112, 2104, 2100, 2008, 1550, 866, 802, 732, 676, 666, 166, 120

Cancer breast 1 - 3672, 2008, 2063, 2103, 2128, 2146, 2133, 2162, 2173, 2180, 2189, 2208, 2263, 2289, 2333, 1865, 444, 125, 95, 72, 48

Cancer breast 2 - 656, 127, 1582, 478, 982, 2134, 2120, 9000, 9999, 304

Cancer breast 3 (*use 2128 for 56min*) - 2128, 33, 1131

Cancer breast secondary - 422, 942, 4412, 1862, 808, 1552, 728, 2720, 1234, 690, 2160, 2136, 477, 28, 317, 96, 3176, 3040, 2145, 2048, 1830, 2112

Cancer BX virus (*carcinoma virus. Sweep up and down 1000hz on MHz freqs and use 0.01Hz sweep on 2876 and 2790, 2128*, 11780000**) - 11780000, 17033662, 1604368, 21275, 17034, 46015.6, 23007.8, 11503.9, 10025, 3713, 2876, 2790, 2128, 2008, 1604

Cancer BX2 TR (*also use 21275, 20080, 17220, 1604000, 11780000 if device capable*) - 5318.8, 8610, 8020, 5278.3, 1675, 5020, 2128, 2127.5, 2127, 2663, 334, 2655, 5388.5, 2385, 6687.3, 3324, 8836.9, 2521, 7356, 2787.5, 5575, 8368.2, 1566.4, 2008, 5013, 5013.5, 10025, 10026, 10027, 7037.5, 263.11

Cancer BY virus (*sarcoma virus, also use Cancer sarcoma*) - 11430000, 20080, 17034, 11780, 11430, 3524, 2128, 2008

Cancer carcinoma basal cell skin (*use 2116 for 30min, others for 5 min, 2116**) - 2116, 760, 2128, 2280, 2876

Cancer carcinoma basal cell skin 1 (*use with 5Hz fuzz*) - 11546700, 11546730, 11546750, 11546760, 11546870, 11546900

Cancer carcinoma bronchial - 462, 776, 852, 1582, 2104, 2144, 2184, 3672

Cancer carcinoma colon (656*) - 656

Cancer carcinoma general - 2128, 1820

Cancer carcinoma larynx - 327, 524, 731, 1133

Cancer carcinoma liver 1 - 393, 479, 520, 734, 3130

Cancer carcinoma liver fermentative - 214

Cancer carcinoma liver secondary (*use Hepatitis B and Parasites, fluke, liver*)

Cancer carcinoma original crane - 21275, 2127.5

Cancer carcinoma scan - 728, 690, 2008, 2104, 2112, 2120, 2128, 2136, 2144, 2152, 2160, 2168, 2176, 2184, 2192, 2200, 2217, 5000, 9999, 304

Cancer carcinoma uterine fermentative - 127

Cancer cells conidium head - 728

Cancer cervical secondary (*use Papilloma and Herpes viruses*)

Cancer droglioma (*see also Cancer, glioma, astrocytoma*) - 853

Cancer experimental additional frequencies - 55.56, 6.8, 66.5, 440, 778, 1050, 1550, 2180, 663, 3672

Cancer fibrosarcoma (*malignancy containing connective tissue and developing rapidly from small bumps on the skin*) - 1744

Cancer fibrous tumor secondary - 1340

Cancer gastric adenocarcinoma - 676

Cancer general 1 - 10000, 5000, 3176, 2720, 2489, 2189, 2184, 2128, 2084, 2050, 2008, 880, 854, 800, 784, 728, 666, 524, 464, 333, 304, 120

Cancer general 2 - 10000, 3176, 3040, 2720, 2489, 2182, 2127, 2048, 2008, 1862, 1552, 880, 802, 786, 727, 665, 664, 465, 304, 125, 96, 72, 64, 20

Cancer general 3 - 10000, 3176, 2950, 2180, 2128, 2049, 2008, 1865, 1488, 943, 886, 866, 776, 732, 728, 690, 676, 650, 523, 442, 414, 304, 240, 128

Cancer glioblastoma - 720, 2008, 2128, 2180, 2182, 728, 832, 800, 664, 20, 855, 543, 641, 857

Cancer glioblastoma tremor - 463, 466, 470

Cancer gliomas (*largest group of brain cancers*) - 543, 641, 857

Cancer harmonic series (*may be based on original Rife/Hoyland cancer frequencies. Extend harmonic series with 66.5 as base, up to 10,000Hz, in this manner: Base*1, 2, 3, 4, 5, 6, 7, 8, 9, 10, etc*) - 66.5, 133, 199.5, 266, 332.5, 399, 465.5, 532, 598.5, 665

Cancer Hodgkins disease (*a form of malignancy characterized by enlargement of the lymph nodes, spleen, and lymph tissue and often includes weight loss, fever, night sweats, and anemia. Also called lymphogranuloma. Also see Chlamydia pneumoniae, Pseudomonas, Penicillium, Aspergillus, and Rhizopus.*) - 552, 1522

Cancer hodgkins TR - 1552, 552, 5318.8, 8610, 8020, 5278.3, 1675, 5020, 2127, 2663, 334, 2655, 5388.5, 2385, 6687.3, 3324, 8836.9, 2521, 7356, 2787.5, 5575, 8368.2, 1566.4, 2008, 5013, 5013.5, 10025, 10026, 10027, 7037.5, 263.11

Cancer Kaposis sarcoma (*also use Herpes type 8*) - 249, 418, 647

Cancer leukemia (*also use Leukose*) - 2127, 2008, 880, 787, 727, 690, 666, 2217

Cancer leukemia feline (*cat*) - 258, 332, 414, 424, 535, 536, 544, 830, 901, 918, 997, 741, 743, 1071.5

Cancer leukemia hairy cell (*typified by abnormal blood cells & shortage of others*) - 122, 622, 932, 5122, 488, 781

Cancer leukemia lymphatic - 478, 833

Cancer leukemia myeloid (*characterized by rapid growth of incompletely formed white blood cells*) - 422, 822

Cancer leukemia T cell - 222, 262, 822, 3042, 3734

Cancer leukemia TR - 2127, 2008, 880, 822, 787, 727, 690, 666, 590, 10000, 2008, 1850, 450, 440, 422, 428, 2030, 2030, 2030, 465, 15, 14, 6.8

Cancer liver (*use Cancer, carcinoma, liver*)

Cancer liver secondary (*use Hepatitis B and Parasites, fluke,*

liver)

Cancer lung (*use Cancer, carcinoma, bronchial*)

Cancer lymphogranuloma lymphoma (*use Hodgkin's disease*)

Cancer lymphogranuloma venereum secondary (*use Chlamydia trachomatis*)

Cancer lymphosarcoma - 482

Cancer maintenance secondary - 120, 250, 428, 465, 600, 626, 650, 661, 664, 667, 690, 728, 776, 784, 800, 802, 832, 880, 1489, 1550, 1600, 1865, 2000, 2012, 2100, 2170, 2490, 2730

Cancer melanoma 1 - 10000, 2217, 2128, 2127, 2050, 2008, 1050, 1000, 880, 787, 728, 666, 495, 465, 450, 125, 100, 95, 80, 60, 45, 20, 10, 7.5

Cancer melanoma 2 - 2217, 2128, 2050, 2008, 1552, 1102, 1050, 1000, 979, 907, 880, 802, 787, 728, 666, 495, 466, 465, 450, 125, 110, 100, 95, 80, 60, 45, 20, 10, 7.5

Cancer melanoma metastasis - 979

Cancer multiple myeloma - 21275, 11780, 5122, 4750, 4213, 2950, 2145, 2128, 2107, 2008, 1488, 822, 781, 647, 526, 475, 422, 418, 263, 249

Cancer mycosis fungoides (*a form of skin cancer resembling eczema*) - 852

Cancer nasopharyngeal secondary (*use EBV*)

Cancer neuroblastoma (*exp*) - 7027, 6148, 5270, 4392, 3513, 2635, 1757, 878

Cancer non Hodgkins 1 (*also use Cancer, Melanoma*) - 574, 588, 666, 778, 1078, 1120, 1340, 1744, 3524, 3713

Cancer non Hodgkins 2 (*also use Simian virus 40*) - 2008, 2004, 2012, 2116, 2128, 3672, 7760

Cancer not killed by 2008 2128 - 2180, 2182, 2184

Cancer pain - 3000, 95, 2127, 2008, 727, 690, 666

Cancer pancreatic (*use Cancer adenocarcinoma*)

Cancer plasmacytoma (*a tumor with plasma cells that occurs in the bone marrow, as in multiple myeloma, or outside of the bone marrow, as in tumors of the inner organs and lining of the nose, mouth, and throat*) - 475

Cancer prostate (*also see Prostate adenominum and Prostate hyperplasia*) - 20, 60, 72, 95, 125, 666, 727, 787, 790, 766, 800, 920, 1998, 1875, 442, 2008, 2127, 2128, 2217, 2720, 2050, 2250, 5000, 2130, 2120, 690, 304

Cancer prostate 1 (*use all freqs for 6 min after assessing detox*) - 2128, 2125, 2131, 2140, 2145, 666, 3672

Cancer prostate Vega 1 - 854, 1840, 2145, 2288

Cancer rhabdomyosarcoma 1 - 2000, 2005, 2008, 2016, 2048, 2084, 2093, 6024, 2100, 2128, 2127, 2184, 2217, 6384, 728, 784, 880, 464

Cancer rhabdomyosarcoma embryonal (2586*) - 6384, 6024, 2586, 2217, 2184, 2128, 2127, 2100, 2093, 2084, 2060, 2048, 2040, 2032, 2016, 2008, 2005, 2000, 880, 784, 728, 464

Cancer rhabdomyosarcoma embryonal - 2586, 5476, 4445

Cancer sarcoma general (BY) - 1755, 3524, 2007.5, 2005, 2015.9, 2083.8, 728, 880, 802, 785

Cancer skin (*use Cancer, carcinoma, basal cell skin and specific forms*)

Cancer stomach secondary (*use Helicobacter pylori*)

Cancer tertiary - 20, 421, 965, 50, 383

Cancrum oris (*rapidly growing oral or nasal ulcer*) - 20, 727, 787, 802, 880

Candida (*also see Parasite general, roundworm, and ascaris if these don't work long term. Some think that chronic candida cannot be cured unless toxic metal accumulation is reduced or eliminated by using a metals cleanse. 464**) - 3176, 2644, 1403, 1151, 943, 886, 877, 866, 762, 742, 661, 465, 464, 450, 414, 412, 386, 381, 254.2, 120, 95, 64, 20

Candida 1 - 10000, 5000, 3176, 2489, 1395, 1276, 1160, 1044, 928, 877, 812, 728, 696, 580, 465, 464, 381, 348, 232, 116, 58, 20

Candida 2 (*includes candida carcinomas and tropicalis*) - 1403, 675, 709, 2167, 2128, 2182, 465, 20, 60, 95, 125, 225, 427, 464, 727

Candida albicans HC - 19217.81, 956.80

Candida carcinomas - 2167, 2128, 2182, 465

Candida secondary (*also use other parasite sets esp roundworm freqs if necessary*) - 72, 422, 582, 727, 787, 802, 1016, 1134, 1153, 1550, 2222, 412, 543, 2128

Candida sweep TR (*sweep from 12006.25 to 12137.5 by .03125 dwell 0.5 pulse 64 75*)

Candida tertiary (*some causal factors*) - 880, 95, 125, 20, 60, 225, 427, 240, 650, 688, 152, 442, 8146, 751, 1146

Candida tropicalis - 1403, 675, 709

Canine parvovirus - 185, 188, 323, 428, 433, 562, 613, 622, 1000, 4027

Canine parvovirus mutant strain - 323, 514

Canine parvovirus type B - 323, 535, 613, 755, 761, 764, 766, 768

Canker sore (*use Stomatitis aphthous*)

Carbo animalis (*homeopathic remedy from animal bone charcoal*) - 444

Carbuncles (*use Staphylococcus aureus*)

Cardiacedema - 9.19

Carpal tunnel secondary (*also use Arthritis*) - 2008, 666

Carvularia spiratera - 879

Cat scratch fever (*use Bartonella henslae*)

Cataract (*also use eye formula antioxidant supplement for all macular degeneration problems, use 1830 for 10 min, 1830**) - 1830, 728, 784, 787, 800, 880, 10000

Cataract 1 - 1830, 1600, 9999, 1552, 2110, 1335, 1654, 2187, 2195, 2211

Cataract 2 - 292, 30, 9.1, 0.3

Cataract brunescent (*brown opacity in later life, 1830**) - 2010, 1335, 1830

Cataract complicated (*secondary type caused by disease, degeneration, or surgery, 1830**) - 1830, 496, 325, 774

Cataract general (*run 1830 extended period, 1830**) - 10000, 2211, 2195, 2187, 2110, 2010, 1830, 1654, 1600, 1552, 1335, 1335, 880, 800, 787, 784, 774, 728, 496, 325

Catarrh - 1800, 1713, 1550, 802, 800, 880, 787, 727, 444, 20

Causticum - 540, 1013

Celiac disease 1 - 39, 2, 3, 4.18, 5.13

Cells of Leudig (*colon tonic*) - 2500

Cephalosporium (*fungi that are the source of some broad spectrum antibiotics*) - 481, 3966, 544

Cephalothecium - 371, 574, 6933

Cerebral palsy - 880, 787, 727, 522, 146

Cerebrospinal troubles - 10000

Cerumen (*ear wax*) - 311, 320, 750, 984, 720

Cervical polyp - 277, 288, 867, 687, 744

Cervicitis (*womb neck inflammations*) - 20, 727, 787, 880

Cervix adenoma (*epithelial tumor of the cervix*) - 433

Chaetomium globosum (867*) - 221, 867, 102

Chakra base root (*pulse at 4Hz*) - 20

Chancre (*use Syphilis*)

Chelidonium - 162

Chemical sensitivity (*see also Liver support*) - 727

Chemtrail detox (*can also be useful for lung and sinus problems. All freqs for 5 min*) - 664, 7344, 2842, 1147, 686.6, 684.1, 1113, 779.9, 829.3, 679.2, 865, 969.9, 1067, 783.6, 800.4, 1045, 1062, 673.9, 690.7

Chest infection secondary - 72, 333, 452, 683

Chicken pox (*by the time pox marks appear, the illness is resolved and the toxins are being expelled through the skin, so must be used in the early stages of flu like symptoms after exposure. Use herpes zoster.*)

Chillbains (*use Perniosis*)

Chilomastix HC (*amoeba cysts*) - 19367.17, 964.23, 21209.29, 1055.95

Chilomonas HC - 19815.25, 986.54

Chlamydia general - 3773, 3768, 2223, 2218, 2213, 942, 866, 840, 622, 555, 470, 430

Chlamydia pneumoniae - 7543.4, 7520.5, 4710.5, 3773.3, 3760.3, 1886, 1880, 943.3, 940, 620, 479, 471.66, 470.9, 941.8, 3767.3

Chlamydia trachomatis (*a usually sexually transmitted bacterial infection causing trachoma, inclusion conjunctivitis, lymphogranuloma venereum, urethritis, and proctitis.*) - 430, 620, 624, 840, 1111.4, 2213, 866, 555.7, 2222.8

Chlamydia trachomatis HC - 18968.87, 944.40

Cholecystitis acute (*painful gallstone attack*) - 481, 743, 865, 928

Cholecystitis chronic (*long-term inflammation of the gallbladder*) - 432, 1551, 801

Cholera (*an extremely contagious and serious bacterial infection of the small intestines*) - 1035, 968, 961, 851, 844, 843, 691, 591, 556, 330

Cholera secondary - 880, 802, 450, 832, 787, 727

Cholesteatoma (*benign tumor usually found in middle ear & mastoid region*) - 453, 618, 793, 5058

Cholesterinum - 1386, 173, 620, 635, 780

Chronic fatigue syndrome (*use with General parasite, roundworm, and fluke sets if necessary. Also see EBV and Fatigue general sets. If no response to these, try Cancer leukemia hairy cell*) - 10000, 660, 2127, 787, 465, 424, 664, 120, 880, 1550

Chronic Fatigue v - 1902, 1000, 959, 649, 568, 243, 922, 2422, 730, 1522, 116, 1489, 962, 172, 1333

Cimicifuga (*plant family including black snakeroot and black cohosh*) - 334, 594

Circulation disturbances - 40, 9.39

Circulatory stasis (*stimulates blood circulation. See also Circulation disturbances*) - 40, 2112, 2145, 2720, 2489

Cirrhosis biliary (*an inflammatory condition in which bile flow through the liver is obstructed*) - 381, 514, 677, 2271

Cirrhosis hepatitis - 291

Cladosporium fulvum (*a pathogenic fungus*) - 438, 233, 776, 510

Clostridium acetobutylicum HC - 19118.23, 951.84

Clostridium botulinum HC (*produces botulin toxin that causes botulism, a type of food poisoning*) - 18022.92, 897.31

Clostridium difficile (*can cause diarrhea following treatment with antibiotics*) - 387, 635, 673

Clostridium perringens HC (*spores*) - 19715.68, 981.59

Clostridium septicum HC - 18122.49, 902.27

CMV (*use Cytomegalovirus*)

Coeliacia - 154, 594, 656, 586, 668, 787, 7958, 665, 674

Cold 1 (*use 800 and 880 for 10 min, others for 5 min*) - 5500, 4400, 802, 787, 727, 720, 552, 440, 400, 125, 72, 800, 880

Cold 2 - 652, 725, 746, 751, 768, 1110, 333, 666, 542, 522

Cold 3 (*fall, 99. Use all freqs 5 min*) - 20, 120, 146, 440, 444, 465, 727, 776, 787, 880, 1500, 1550, 5000, 1000

Cold 4 (*use 880 and 800 for 10 min, 728 for 5 min*) - 3176, 2489, 880, 800, 728

Cold 5 (*use 7728 and 4888 for 10 min*) - 7728, 4888, 8238, 2413, 880, 787, 776, 727, 440, 746, 567, 7880, 787, 300, 310, 1234, 9999

Cold 6 - 7660, 7344, 5000, 3702, 3672, 2688, 2400, 1862, 1550, 1238, 1234, 1200, 975, 880, 802, 787, 780, 778, 776, 774, 772, 770, 768, 766, 727, 688, 683, 660, 450, 412, 352

Cold and Flu (*fall, 98. Use 8700 and 7760 for 15 min, others for 5 min*) - 250, 465, 8210, 8700, 7760

Cold and flu winter 01 - 959, 962

Cold in head chest (*Mutates constantly; too many strains to include complete list of frequencies. See also Strep Pneumonia, Adenovirus, Rhinitis, Coronavirus*)

Sinusitis, Pneumonia, Chest infection, and Rhino pneumonitis sets. (*Use lots of echinacea at onset to prevent cell damage that prolongs healing, even if correct freqs are found.*) - 10000,

7344, 4412, 3176, 2489, 1550, 880, 802, 787, 776, 766, 728, 712, 688, 683, 665, 660, 600, 444, 333, 20

Cold 2005 TR - 10000, 7344, 5000, 2950, 2900, 2650, 2600, 1550, 1234, 740, 880, 787, 727, 330, 165, 82.6, 41.75, 20.87, 30

Cold sores (*use Herpes Simplex I*)

Colic - 1550, 832, 802, 787, 727, 20

Colitis and Diarrhea (*inflammation of the colon*) - 10000, 5000, 1550, 880, 832, 802, 787, 727, 621, 465, 454, 440, 433, 344, 152

Collectotrichum - 1482

Colon problems general - 20, 440, 880, 1552, 802, 832

Colors (*color decode from Jade Machine*) - 2155, 2055, 960, 920, 858, 815, 800, 745, 677, 640, 624, 470

Comedones (*blackhead*) - 778

Complete early crane - 34750, 31750, 31000, 10000, 5000, 3500, 2720, 2489, 2452, 2250, 2200, 2180, 2130, 2127.5, 2120, 2100, 2093, 2050, 2008, 2000, 1998, 1865, 1862, 1850, 1840, 1800, 1600, 1570, 1560, 1552, 1550, 1500, 1100, 1050, 1027, 1000, 885, 880, 875, 864, 804, 803, 802, 800, 799, 787, 784, 781, 780, 776, 775, 770, 764, 740, 730, 727.5, 725, 712, 700, 690, 676, 666, 664, 660, 650, 625, 622, 600, 500, 465, 450, 440, 432, 428, 423, 400, 304, 250, 240, 162, 160, 125, 121, 120, 100, 95, 82, 81, 80, 78, 72, 70, 60, 41, 36, 30, 28, 26, 22, 20, 18, 15, 14, 13, 10, 9, 8, 7, 5.5, 5, 4, 3.5, 1.8, 1

Complete early rife - 10000, 5000, 3500, 2489, 2250, 2127.5, 2093, 2008, 2000, 1865, 1850, 1800, 1600, 1570, 1560, 1550, 1500, 880, 802, 800, 787, 784, 776, 740, 727.5, 660, 650, 625, 622, 600, 500, 465, 450, 400, 250, 125, 120, 100, 80, 60, 20

Condylomata (*usually venereal warts, caused by papilloma virus. Occur near intersection of mucous membranes and skin. Use also Papilloma.*) - 466

Conjunctivitis (*also known as pink eye. Also use Chlamydia trachomatis and see Bacillus subtilis if necessary*) - 2025, 1830, 1552, 1550, 1246, 1206, 880, 822, 802, 787, 727, 722, 489, 432, 80, 20

Constipation (*also use Parasites general and roundworm sets if necessary*) - 3176, 1550, 880, 832, 802, 787, 776, 727, 444, 440, 422, 20

Contusion (*bruise*) - 9.1, 110, 2720

Convoforce - 774

Convulsions 1 - 10000, 880, 787, 727

Convulsions spasticity - 9.19, 8.25, 7.69

Coraforce - 774

Corallinus - 533

Corn smut - 546, 1642, 289

Coronavirus SARS - 9918, 9740, 4959, 4870, 2479.5, 2435, 1394.7, 1369.6, 1239.7, 1217.5, 774.8, 760.9, 619.9, 608.7, 464.9, 456.5, 309.9, 304.4, 155, 152.2

Corynebacterium diphtheriae (use *Diphtheria*)

Corynebacterium diphtheriae HC - 17027.18, 847.73

Corynebacterium xerosis HC - 15732.71, 783.29

Costalgia (*rib pain*) - 10000, 880, 787, 727

Coughing - 7760, 7344, 3702, 3672, 1550, 1500, 1234, 776, 766, 728, 720, 688, 683, 530, 525, 524, 522, 514, 444, 440, 432, 146, 125, 95, 72, 20, 7.7, 0.5

Cough lingering TR - 4664.45, 3444.55, 2543.35, 1666.35, 3665.65

Coughing from flu vaccine 1 - 453, 550, 674, 728, 1109, 7160, 634, 639, 1089, 522, 524, 525, 146, 1500, 1550, 0.5, 514, 530, 432, 440, 444, 720, 1234, 3702, 20, 125, 72, 95, 7.7

Coxsackie B1 - 353, 384, 834, 587, 723

Coxsackie B1 HC - 18122.49, 902.27

Coxsackie B2 - 705, 534, 867

Coxsackie B3 - 612, 487, 868, 653, 654

Coxsackie B4 - 421, 353, 540, 8632

Coxsackie B4 HC - 18047.81, 898.55

Coxsackie B5 - 462, 1043, 1083, 569, 647, 708, 774

Coxsackie B6 - 488, 736, 814, 343, 551, 657, 668, 669

Coxsackie General (see also *Mumps*) - 612, 136, 144, 232, 380, 422, 424, 435, 921, 923, 769, 1189, 595, 676

Cramping and nausea - 72, 95, 190, 880, 832, 787, 727, 20, 4.9

Cramps - 10000, 880, 787, 727, 26

Cramps menstrual - 26

Crinis humansis - 646

Crocus sotillus - 710

Crohns and other bowel problems - 141, 488, 866, 468, 782, 664, 604, 187, 543, 1423, 972, 110, 133, 979, 173, 233, 672, 510, 447, 350

Crohns disease (also use *colitis, colon, and parasite freqs*) - 10000, 727, 786, 440, 832, 880, 1550, 20

Crohns disease protozoa 1 - 200, 206, 249, 298

Crohns disease viroid 1 - 585, 593, 600

Croup (*characterized by a loud cough that resembles the barking of a seal, difficulty breathing, and a grunting noise or wheezing during breathing*) - 10000, 7344, 3702, 3672, 1234, 1165, 580, 290, 870, 333, 666, 523, 786, 728, 880, 1550, 960, 712, 278, 683, 688, 776, 766, 444, 95, 72, 20

Cryptococcus neoformans (*yeast which causes respiratory infection than can turn into meningitis. Also known as torulosis.*) - 367, 428, 444, 476, 478, 522, 579, 594, 785, 792, 872, 2121, 5880, 5884, 597, 613, 624

Cryptosporidium (*parasitic protozoa sometimes causing diarrhea in humans*) - 220, 482, 575, 4122, 698, 711, 893, 895, 1276, 5690

Cunninghamella - 311, 323

Curva spic - 435

Cyclospora - 543, 316, 992, 751, 268, 2144

Cyst ovarian - 982

Cyst sebaceous TR (*streptothrox plus nocardia and actinomyces Israeli*) - 694, 719, 784, 228, 231, 237, 887, 2890, 222, 262, 2154, 465, 488, 567, 7880, 10000, 787, 747, 727, 20

Cyst solitary - 75, 76, 543

Cystic fibrosis (*Also called mucoviscidosis, a disorder of the exocrine glands that causes them to release very thick mucus. Use Pseudomonas aeruginosa, Breathing deep, and General Antiseptic and see Parasites general and roundworm freqs*) - 523, 557, 478, 776, 660, 727, 778, 787, 802, 880

Cystitis chronic (*long-term inflammation of the urinary bladder and ureters*) - 246, 1550, 880, 802, 787, 727, 465, 20

Cystopyelo nephritis (*inflammation from bladder to kidney*) - 1385

Cysts hydatid (use *Parasites tapeworm*)

Cytochalasin HC - 4530.62, 3833.60, 225.57, 190.86

Cytomegalovirus (*CMV, known as salivary gland virus or human herpes type 5, 2145**) - 126, 597, 629, 682, 1045, 2146, 2144, 2145, 8848, 8856

Cytomegalovirus HC - 20362.91, 1013.81

Cytophaga rubra HC - 21408.44, 1065.86

D

Deafness (*partial to complete*) - 10000, 1550, 880, 802, 787, 727, 20

Deer tick 1 - 7989, 289, 737, 738, 271, 671, 773

Dematium nigrum (*soil fungi found in human lesions*) - 243, 738

Dengue fever TR - 160, 500, 1600, 5000, 7344, 4412, 1550, 1234, 740, 880, 787, 727, 330, 10000, 5000, 30, 10551.5, 5275.8, 2627.9

Dental and jawbone infections 1 (*use converge 1 1 on all except use converge 1 0.1 on 728*) - 7270, 2720, 2170, 880, 787, 727, 500, 190, 728

Dental and jawbone infections 2 - 15, 326, 465, 727, 787, 880

Dental foci (*Neglecting this can prevent recovery from any illness if infection is a problem*) - 5170, 3000, 2720, 2489, 1800, 1600, 1550, 1500, 880, 832, 802, 787, 776, 727, 666, 650, 646, 600, 465, 190, 95, 47.5

Dental general (*see also Toothache*) - 728, 784, 635, 640, 1036, 1043, 1094, 685, 60, 48, 465

Dental infection (roots and gums) - 960, 660, 666, 690, 727, 784, 787, 800, 880, 1560, 1840, 1998, 2489

Dental infection 1 - 5170, 3000, 2720, 2489, 1800, 1600, 1550, 1500, 1094, 1043, 1036, 880, 832, 802, 787, 776, 727, 685, 666, 650, 646, 640, 635, 600, 465, 190, 95, 60, 48, 47.5

Dental infection 2 - 10000, 5000, 1562, 1552, 1550, 880, 800, 799, 787, 784, 776, 774, 728, 727, 664, 620, 464, 254.2, 120, 64, 20

Dental infection and Earache 1 - 960, 930, 900, 880, 832, 802, 800, 787, 776, 775, 768, 760, 750, 727, 685, 680, 666, 650, 646.3, 646, 640, 635, 622.3, 547, 521, 518

Dental infections TR - 3400, 2489, 1700, 1560

Dental Infections v - 981, 138, 142, 177, 183, 210, 222, 233, 436, 534, 626, 723, 835, 875, 5227, 7059

Depression anxiety trembling weakness - 3.5, 800

Depression drugs or toxins - 1.1, 73

Depression general (*avoid starches in diet, use a multivitamin and multimineral, and drink plenty of water*) - 10000, 5000, 3176, 800, 787, 73, 35, 7.83, 3.5, 1.1

Detox and lymphs - 10000, 3176, 3040, 880, 787, 751, 727, 676, 635, 625, 522, 465, 444, 440, 304, 306, 148, 146, 15.2, 15.05, 10.36, 10, 7.83, 6.3, 2.5, 3176

Detox assist - 10000, 3176

Detox 1 - 10000, 3176, 522, 164, 89, 24

Diabetes 1 (*Warning; can cause large drop in blood sugar level. Use 5000 for 15min*) - 5000, 2127, 2080, 2050, 2013, 2008, 2003, 2000, 1850, 880, 803, 800, 787, 727, 660, 484, 465, 440, 35, 20, 6.8

Diabetes 2 - 4200, 2128, 1865, 1850, 1550, 787, 465, 444, 125,

95, 72, 48, 302

Diabetes associated infection - 2020, 800, 727, 786, 190, 80, 20

Diabetes secondary - 10000, 2720, 2170, 1800, 1550, 880, 802, 727, 465, 20

Diabetes tertiary - 1850, 32000, 4000, 500

Diabetic loading - 35, 700

Diabetic toe ulcer 1 (also use Staph aureus freqs and see Staph general,

General antiseptic (*Circulation stimulation as needed*) - 786, 2112, 1050, 1.2, 5000, 832, 20

Diarrhea (see also Colitis, Clostridium difficile, E. coli, and for chronic problems,

giardia and IBS (*Also see Parasite general set if no relief.*) - 1550, 880, 832, 802, 786, 727, 465

Dientamoeba fragilis HC - 20113.98, 1001.42

Diphtheria (*bacterial infection causing sore throat, fever, rapid heartbeat, nausea, chills, headache and may progress to damage heart and nerves from bacterial toxins. Rare in US.*) - 10000, 1000, 925, 800, 788, 776, 624, 590, 432, 340, 151

Diplococcus diphtheriae HC - 17973.13, 894.83

Diplococcus pneumoniae HC - 17923.34, 18172.28, 892.35, 904.74

Dirofilaria immitis (*use Parasites heartworm*)

Disc herniated - 727, 787, 2720, 10000

Distemper - 242, 253, 254, 255, 312, 442, 551, 573, 624, 671, 712, 760, 940, 950, 1269, 1950, 8567, 660

Distortion (*twisting of muscles, spine*) - 9.1, 110

Diverticulitis acute (*see Intestines, inflammation. All freqs for 10 min*) - 120, 500

Diverticulosis (*characterized by tiny hernias of intestinal tissue protruding through the muscular wall of the colon*) - 154, 934

Dizziness (*use Vertigo*)

DNA repair (*exp*) - 528, 731, 732

Dog and cat hostility 1 - 3.6

Downs syndrome palliative - 20

Drogloma (*use Cancer, droglioma*)

Drug addiction - 20

Duodenal ulcer (*use Ulcer, duodenal*)

Duodenitis - 223

Dupuytren's contracture (*4th and 5th finger curling into hand, unable to straighten*) - 1.2, 250

Dysentery (*acute diarrhea with blood and mucus. Also use Entamoeba histolytica, Salmonella, and Shigella*) - 1552, 802, 832

Dysmenorrhea (*painful menstruation. Use with plain water douche*) - 26, 4.9, 1550, 880, 802, 787, 727, 465

Dyspepsia (*indigestion. If chronic or with bloating, also see Parasites general*) - 10000, 880, 1550, 832, 800, 787, 727, 465, 444, 20, 125, 95, 72, 4.9

E

E coli (*Escherichia coli; can cause infections in wounds and the urinary tract. If using these leads to common cold symptoms, follow with Adenovirus freqs, 800/802*, 1550/1552**) - 7849, 7847, 1730, 1722, 1552, 1550, 1320, 1244, 1000, 957, 934, 856, 840, 832, 804, 802, 800, 799, 776, 642, 634, 556, 548, 413, 333, 330, 327, 289, 282 E coli 1 (*recommended for cancer adjunct*) - 7847, 1730, 1712, 1244, 1000, 934, 856, 840, 800, 776, 642, 634, 556, 539, 358, 330

E coli comp - 7849, 7847, 1730, 1722, 1712, 1703, 1552, 1550, 1320, 1244, 1242, 1000, 957, 934, 856, 840, 832, 804, 802, 800, 799, 776, 642, 634, 632, 556, 548, 539, 413, 358, 333, 330, 327, 289, 282

E coli HC - 17724.20, 19566.32, 974.15, 882.44

E coli mutant strain - 556, 934, 1242, 1244, 1703, 632, 634, 776

Ear conditions various (*discharges, tinnitus, itching, hearing loss. Also see Otitis.*) - 10000, 880, 787, 727, 776, 766, 688, 683, 652, 645, 542, 535, 440, 410, 340, 201, 158, 20, 9.19

Ear fungus 1 - 854

Ear wax (*use Cerumen*)

EBV (*use Epstein-Barr Virus*)

Echinococcinum (*use Parasites, tapeworms, echinococcinum*)

Echo Virus (*Endometriosis Tuberylosa, can cause a type of viral meningitis*) - 922, 788, 765, 722, 625, 620, 614, 613, 612, 611, 610, 609, 608, 607, 606, 605, 604, 603, 514, 461

Eczema - 9.19, 707, 1550, 802, 787, 727, 10000, 5000, 2720, 2008, 2180, 2128, 664, 120, 20

Eczema 1 - 770, 916, 415

Eczema 2 - 730.2, 1550, 802, 787, 690

Eczema vascular and lung disturbances - 9.39

Edema (*see also Kidney and Lymph stimulation*) - 40, 522, 146, 6.3, 148, 444, 440, 880, 787, 727, 465, 20, 5000, 10000

Electrolyte levels (*to improve*) - 8.1, 20, 10000

Electrosmog 1 - 99.5

Elephantiasis (*use with parasite, esp roundworm and nematode freqs*) - 623, 824, 865, 710

Elkanella corroderis HC - 19018.66, 946.88

Emotional ties to diseases - 764, 664

Emphysema (*use with mycoplasma pulmonis, mycoplasma pneumonia, and parasite freqs, esp roundworm*) - 1234, 3672, 7344, 880, 787, 727, 120, 20, 80

Emphysema comp - 7344, 3672, 2838.5, 2688, 2404.2, 1234, 975, 880, 787, 777, 766, 727, 709.2, 688, 683, 660, 650, 601, 422, 300.5, 240, 150.3, 128, 120, 80, 75.1, 20

Encephalitis (*inflammation of the tissues of the brain and spinal cord*) - 841

Endocarditis (*use Listeriose*)

Endocrine RX TR (*includes stimulating frequencies for pineal, hypothalamus, pituitary, thyroid, adrenal, and thymus glands*) - 662, 1725, 1342, 1534, 1413, 1351, 635, 763, 1335, 645, 10000

Endolimax nana HC (*trophozoites and cysts*) - 19715.68, 981.59, 21508.01, 1070.82

Endometriosis 1 (*use 246, 800, and 1550 for 5 min*) - 6766, 6672, 6641, 6578, 2150, 2128, 2082, 2013, 2008, 2003, 2000, 1850, 1550, 945, 854, 846, 830, 800, 763, 676, 651, 524, 435, 275, 246, 142

Endometriosis chronic (*growth of uterine tissue outside the uterus that may cause pain, infertility, & abnormal uterine bleeding. Use with Parasites, flukes, general*) - 246, 800, 1550

Endometriosis tuberylosa (*use Echo virus*)

Energy vitality - 9999

Entamoeba coil HC (*trophozoite*) - 19715.68, 981.59

Entamoeba gingivalis HC (*trophozoite*) - 21806.74, 1085.69

Entamoeba histolytica (*highly damaging protozoa causing dysentery and liver infection*) - 148, 166, 308, 393, 631, 778

Entamoeba histolytica HC - 19168.02, 954.32

Entamoeba histolytica secondary - 1552, 880, 802, 1550, 832, 787, 727, 690, 660, 465, 786, 768, 523, 333

Enterobacter aerogenes HC (*causes intestinal problems*) -

18620.36, 927.05

Enterobiasis - (pinworms. Use *Parasites, enterobiasis*)

Enterococcinum (homeopathic nosode for *Strep* family organisms found in the digestive and urinary tracts) - 686, 409

Enterohepatitis (inflammation of bowel & liver) - 552, 932, 953

Enterovirus General (generic term meaning small virus, includes *Echo, Coxsackie, and Polio*) - 5000, 3636, 2632, 1850, 1500, 1488, 1422, 1189, 1044, 922, 868, 845, 822, 788, 776, 766, 742, 733, 721, 676, 654, 625, 620, 612, 610, 608, 595, 515, 487, 461, 435, 423, 380, 322, 283, 232, 144, 136, 20

Enuresis (bed wetting. Use with parasite sets) - 10000, 880, 787, 727

Epicoccum - 734, 778

Epicondylitis (tennis elbow, lateral or vertical) - 1.2, 250, 728, 766, 776, 880

Epidermophyton floccinum (fungus that attacks skin & nails, including some athlete's foot and jock itch ringworms. Also use *Microsporum freqs* and *Fungal general* if necessary.) - 22107, 465, 784, 644, 766, 345

Epididymitis (inflammation of testicle area, ducts. See also *Orchitis.*) - 2250, 1500, 880, 787, 727, 20

Epilepsy (also try *Shigella*) - 10000, 880, 802, 787, 727, 700, 650, 600, 210, 633, 125, 20

Epstein Barr HC - 18919.09, 18670.15, 941.93, 929.53

Epstein Barr virus (the herpes virus causing mononucleosis) - 8768, 6618, 1920, 1013, 825, 738, 669, 667, 663, 660, 274, 253, 172, 105

Epstein Barr virus secondary (also try *General parasite* and *roundworm freqs*) - 744, 776, 778, 465, 880, 787, 727, 1032, 1920

Ergot HC - 14687.19, 731.23

Erwinia amylovora HC - 17425.47, 867.56

Erwinia carotovora HC - 18570.58, 924.57

Erysipelas (bacterial infection manifesting in skin inflammation caused by *strep pyrogenes* or other pathogens and possibly related to the swine form of the disease) - 616, 776, 735, 845, 660, 10000, 880, 787, 727, 465, 20

Erythema infectiosum (human parvovirus B19, sometimes known as Fifth disease, a contagious viral infection which causes blotchy or raised red rash with mild illness. exp) - 809, 1618, 3236

Erythema nosodum - 9.39

Escherichia coli (use *E. coli*)

Esophagus (constriction. Also see *General antiseptic and dental freqs*) - 880, 787, 727

Euglena - 432, 3215, 3225, 3325, 6448

Eustachian tube inflammation (also use *General Antiseptic*) - 1550, 880, 802, 787, 776, 727, 465

Eye disorders (blurred vision, cataracts, crossed eyes, diplopia, infections, etc.) - 10000, 2010, 1831, 1830, 1829, 1600, 1552, 1335, 880, 787, 727, 496, 400, 360, 350, 160, 20

Eye inflammation (also see *General antiseptic*) - 1.2, 80

Eyelid droop (use *Ptosis*)

Eyes glaucoma - 1600, 1830, 880, 787, 727

Eyesight sharpen - 350, 360, 1830

F

Facial cramps - 10000, 6000, 304, 1131, 33

Facial paralysis - 10000, 880, 787, 727

Facial toning - 1.2

Fainting - 20

Fascia (fibrous tissue under the skin. Also see *Fibroid freqs*) - 20

Fatigue general - 428, 424, 664, 660, 464, 125, 120, 95, 72, 20, 444, 1865, 10000, 5000

Febris wolhynia (a *Rickettsia* illness, transmitted by lice, that is debilitating and conducive to relapse) - 547, 356

Fel tauri (homeopathic preparation of ox bile) - 672

Feli - 435, 742

Felis - 430, 834, 2232, 3233

Felon 1 (pus, infection of finger tips) - 657, 659, 738, 751

Felon 2 - 663, 665, 720, 722

Feloris Wolyhnic - 547

Fever (some causes) - 1552, 880, 800, 832, 422, 2112, 787, 727, 20

Fever sunstroke - 20, 440, 880

Fibroadenoma mammae (non cancerous, fibrous nodules in the breasts. Use *kelp capsules* too) - 1384, 2128, 2189

Fibroids general (see *Parasites, flukes, general*) - 2950, 2189, 2128, 2127, 2008, 1744, 1552, 1550, 1488, 1384, 1234, 880,

802, 787, 776, 727, 690, 666, 465, 267

Fibroma - 2127, 2008, 727, 690, 666, 1550, 802, 465

Fibromyalgia (*run Detox afterwards if needed*) - 328, 880, 800, 728, 5000, 2720, 2180, 2128, 664, 464, 304, 120, 20

Fibromyalgia 1 - 120, 140, 304, 464, 728, 800, 880, 2489, 3176, 5000, 6000, 9000

Fibromyalgia 2 - 2008, 2050, 2080, 2127, 880, 800, 787, 728, 600, 420, 320, 120, 3790, 3792, 3794, 3796, 3798, 3800, 3802, 3804, 3806, 3808, 3810

Fibromyalgia TR (*includes muscle relaxation frequencies. Run 321, 384, and 40 for 12 min each*) - 321, 384, 40, 965, 200, 120, 240, 760, 68, 6000, 304

Fibropendulum - 661, 7465, 211, 233, 766

Fibrosarcoma - 1744

Fibrosis lung (*use Pulmonary fibrosis*)

Fifth disease (*use Erythema infectiosum*)

Fischpyrogen - 832

Fissures - 787, 20, 10000

Fistula dentalis (727*, 878*, 1122*) - 550, 727, 844, 878, 1122, 786

Fistula ulcer (*use also Staph freqs*) - 880, 832, 787, 727

FIV - 262, 323, 372, 404, 567, 712, 742, 760, 773, 916, 1103, 1132, 3701

Flatulence - 1550, 880, 832, 802, 787, 727, 465

Flu (*use Influenza*)

Flukes (*use Parasites, flukes*)

Fluor Alb (*homeopathic cell salt*) - 110, 342, 420, 423, 688, 757

Follicular mange (*contagious dermatitis found in many animals that is caused by mites and in which the principle activity is at the hair follicles. Also soak with vegetable oil, let sit at least 15 minutes, and rinse with thyme tea.*) - 253, 693, 701, 774

Folliculitis hot tub (*tiny pimples*) - 174, 482, 5311

Food poisoning (*some classes. Also use Salmonella typhimurium and see General antiseptic, Abdominal pain, and Abdominal inflammation.*) - 1552, 802, 832

Foot and mouth syndrome (*a mild viral infection found in young children but may also be a factor in ALS*) - 232, 237, 1214, 1243, 1244, 1271, 5411

Fractures healing - 220, 230, 10000, 880, 787, 727

Frequency fatigue (*tiredness that is not detox from using frequency generator too long*) - 10.55, 7.83

Frigidity female - 10000, 20

Frostbite - 880, 787, 727

Frozen shoulder (*also use strep pneumonia if necessary*) - 10000, 880, 802, 787, 766, 727

Fruitfly - 2167

Fungus and mold v - 4442, 2411, 1833, 1823, 1333, 1155, 1130, 1016, 942, 933, 886, 880, 866, 784, 774, 766, 745, 743, 728, 623, 623, 594, 592, 565, 555, 524, 512, 464, 414, 374, 344, 337, 321, 254, 242, 222, 158, 132

Fungus EW range - 823, 824, 825, 826, 827, 828, 829

Fungus flora 1 - 331, 336, 555, 587, 632, 688, 757, 882, 884, 887

Fungus foot and general 1 (*use 1550 for 30min*) - 1550

Fungus general (*also see candida, yeast, and other specific types*) - 2222, 1552, 1550, 1153, 1134, 1016, 880, 802, 787, 784, 727, 582, 465, 422, 254, 72, 20

Furunkulosis (*boils on skin. Also use Staph aureus freqs*) - 1550, 1000, 880, 802, 787, 784, 770, 728, 727, 660, 465, 200, 116, 20

Furunkulosis herpes (*also see Herpes general and Furunkulosis*) - 200, 1000, 1550, 802, 787, 727

Furunkulosis TR (*also use Staph aureus*) - 1550, 1000, 880, 802, 787, 784, 770, 728, 727, 660, 465, 200, 116, 20

Fusarium general - 768, 625, 746

Fusarium oxysporum (*a fungus causing inflammation of the cornea of the eye*) - 102, 332, 705, 795, 780

G

Gaffkya tetragena HC (*causes respiratory infections*) - 17425.47, 867.56

Gardnereila vaginalis HC (*causes ovarian and genital tract infection*) - 16927.60, 842.78

General antiseptic - 10000, 5000, 3176, 2145, 1552, 1488, 880, 802, 786, 776, 766, 760, 728, 688, 683, 676, 666, 660, 464, 450, 444, 428, 120, 20

General antiseptic 1 - 10000, 5000, 3176, 2720, 2000, 1865, 1770, 1550, 1360, 880, 804, 802, 787, 786, 760, 728, 690, 660, 590, 555, 465, 450, 428, 768, 523, 333, 14

General demo (*greatest hits*) - 10000, 4412, 3040, 2128, 2112, 1862, 1550, 880, 800, 786, 732, 728, 712, 688, 676, 644, 464, 422, 128, 120, 20

General malady - 40000, 10000, 5000

General prog Blaster5 - 2489, 2128, 2008, 2000, 1998, 1840, 1800, 1600, 1570, 1560, 1550, 1500, 880, 800, 787, 784, 776, 740, 727, 690, 666, 622, 600, 500, 400, 120, 80

General program EMEM - 720, 1550, 20, 4200

General prophylaxis - 20, 64, 95, 125, 225, 427, 440, 664, 728, 784, 880, 802, 832, 680, 760, 1550, 464, 10000, 676, 1488

Geotrichum candidum (*fungus found in feces and dairy products whose manifestations resemble those of candida*) - 350, 355, 384, 386, 403, 404, 407, 409, 410, 412, 415, 418, 543, 544, 687, 987, 988, 737, 700

German measles (*Use Measles, rubella*)

Giardia (*use Parasites, giardia*)

Gingivitis (*inflammation of gums. See also Dental, Dental foci, Stomatitis. Take calcium and magnesium internally and brush with CoQ10 and myrrh or goldenseal*) - 1550, 880, 802, 787, 728, 726, 465, 20, 1556, 776, 465

Glanders (*use Pseudomonas mallei*)

Glandular fever - 10000, 20

Glandular fever thyroid (*exp*) - 10000, 20, 16000

Gliocladium (*brain fungus*) - 855, 469, 633

Goiter (*use Struma*)

Gonads inflammation (*use Orchitis*)

Gonorrhea - 7120, 6000, 2330, 1500, 712, 660, 600, 233, 150

Gonorrhea neisseria HC - 16628.88, 927.90

Gout (*Also use water cure and high dose bromelain or other enzymes. See also Kidney freqs*) - 9.39, 3000, 10000, 880, 787, 727, 20

Granuloma dent - 441

Gravel urine - 2.65, 3000, 880, 787, 727, 20

Graves disease and goiter - 20, 727, 787, 880

Greatest Hits (*use General demo*)

Green Dye - 563, 2333

Grippe (*use Influenza, grippe*)

Griseofulvin - 14338.68, 713.88

Gulf War Syndrome v - 7755, 6007, 5419, 2688, 1370, 1365, 975, 866, 837, 771, 714, 639, 633, 578, 533, 435, 392, 255, 253, 136

Guillain Barre Syndrome TR - 10000, 7344, 5000, 2950, 2900, 2650, 2600, 1550, 1234, 740, 880, 787, 727, 330, 165, 82.6, 41.75, 20.87, 30, 7344, 4412, 5000

Gum disease (*use Gingivitis Pyorrhea*)

H

Haemophilia tonic (*hereditary bleeding disorders in which the blood does not readily clot*) - 778, 845, 751

Haemophilus influenzae HC (*causes bacterial meningitis, infects joints*) - 16728.45, 832.86

Hair human - 646

Halitosis (*bad breath. See also Strep pneumonia, Strep aureus, Pharyngitis, Dental, Parasite general, and General antiseptic sets*) - 1550, 802, 880, 787, 727, 20

Hallucinations - 10000, 880, 787, 727, 20

Hand foot and mouth syndrome (*a mild viral infection found in young children*) - 232, 237, 1214, 1243, 1244, 1271, 5411

Hangover (*see also Kidney and Liver support freqs*) - 10000, 522, 146

Hay fever (*only some types*) - 880, 787, 727, 20

Head injury followup (*Seek immediate medical attention for head injuries!*) - 9.6, 3000, 880, 787, 727, 522, 72, 5.8, 4.9

Headaches - 144, 160, 1.2, 520, 10, 10000, 304

Headaches caused by vertebral misalignment (*Not a substitute for adjustment*) - 9.6, 3000

Headaches comp - 10000, 3000, 880, 787, 727, 650, 625, 600, 522, 520, 304, 160, 146, 144, 125, 95, 73, 20, 10, 9.6, 9.39, 7.83, 6.3, 5.8, 4.9, 4, 1.2

Headaches due to parasites (*see also Parasites, strongyloides*) - 125, 95, 73, 20, 727, 3000

Headaches due to toxicity - 522, 146, 4.9, 3000, 880, 787, 727, 20

Headaches unknown cause - 10, 4, 5.8, 6.3, 7.83, 3000, 650, 625, 600

Headaches urogenitally caused - 9.39, 3000

Healing and regeneration - 2720, 266, 47

Heart blockage 1 - 59, 60, 61

Heart general - 20, 81, 162, 5000

Heart tonic (*lab animals only. See also Chlamydia, Staph infection, Circulatory stasis, and Kidney freq sets*) - 80, 160, 20, 73, 3.9, 3000, 880, 787, 727, 465, 162, 125, 95, 20, 1.2

Heartburn chronic (*use calcium magnesium supplement and The Water Cure. Also see Staph and Strep general sets and H. pylori*) - 676, 832, 2720, 2170, 2127, 1800, 1600, 1550, 802, 1500, 880, 787, 727, 685, 465, 444, 1865, 125, 95, 72, 20

Heartworm (*use Parasites, heartworm*)

Heavy metal toxicity TR - 31905.6, 38014.4, 39032.6, 43644.3, 56656.4, 76677.5, 43644.3, 38014.3, 4202.3, 5333.7, 9887, 1902, 317

Heel spurs (use *Bone spurs*)

Helicobacter pylori (*ulcer. Run 676 for 10 min, 676**) - 2950, 2819, 2779, 2167, 880, 728, 705, 695, 676, 352, 347

Helicobacter pylori 1 - 2167, 728, 880, 2950

Helicobacter pylori 2 - 695, 2779, 705, 2819

Helicobacter pylori 3 - 0.2, 0.4, 0.6, 0.8

Helminthosporium (*the reproductive element of some parasitic worms*) - 793, 969

Hemobartinnella felis - 603, 957

Hemophilia - 603

Hemorrhage - 1550, 802

Hemorrhoids - 4474, 6117, 774, 1550, 447, 880, 802, 727

Hepatitis A (*add Hepatitis general freqs if necessary*) - 321, 346, 414, 423, 487, 558, 578, 693, 786, 878, 3220, 717

Hepatitis B (*add Hepatitis general freqs if necessary*) - 334, 433, 767, 869, 876, 477, 574, 752, 779

Hepatitis B HC (*antigen*) - 20562.06, 1023.72

Hepatitis C (*also try Parasites, schistosoma mansoni and Hepatitis general freqs if necessary*) - 5000, 3220, 3176, 2489, 2189, 1865, 1600, 1550, 1500, 1371, 933, 931, 929, 880, 802, 665, 650, 633, 625, 528, 444, 329, 317, 250, 224, 166, 146, 125, 95, 72, 28, 20

Hepatitis C 1 - 10000, 5000, 3220, 3176, 2489, 1865, 1600, 1550, 1500, 880, 802, 665, 650, 600, 444, 250, 166, 146, 125, 95, 72, 28, 20

Hepatitis C TR - 728, 166, 224, 317, 727, 787, 880, 2189

Hepatitis general - 1550, 1351, 922, 880, 802, 727, 477, 329, 317, 224, 28

Hepatitis general secondary - 284, 458, 477, 534, 788, 922, 9670, 768, 777, 1041

Hepatitis general v - 987, 934, 922, 878, 876, 842, 786, 781, 563, 562, 558, 534, 528, 477, 334, 321, 317, 224, 213, 166

Hernia - 10000, 787, 727, 2720, 5000

Herpes general (*use 1488 and 2950 for 15min, 1488**) - 2950, 1900, 1577, 1550, 1489, 1488, 629, 464, 450, 383, 304, 165, 141

Herpes general secondary - 37000

Herpes general v - 165, 141, 383, 450, 629

Herpes progenitalis (*genital. Also use Herpes simplex II*) - 141, 878, 898, 5310, 440, 171, 660, 590, 1175

Herpes simplex I (*secondary. Cold sores: primarily non-genital, first try Herpes general*) - 322, 476, 589, 664, 785, 822, 895, 944, 1043, 1614, 2062, 1489, 2950

Herpes simplex I 1 - 339, 343, 480, 591, 778, 782, 843, 1614, 657, 699, 700, 734

Herpes simplex I 2 - 2489, 1800, 465, 1550, 1500, 880, 787, 727, 1850, 428

Herpes simplex I 3 - 470, 647, 648, 650, 652, 654, 656, 658, 660, 847, 5641, 8650

Herpes simplex I 4 (*use 2950 for 20min*) - 2950

Herpes simplex I HC - 14537.82, 17201.43, 723.80, 856.41

Herpes simplex II - 556, 832

Herpes simplex II HC - 17923.34, 17674.41, 892.35, 879.96

Herpes simplex IU2 - 808

Herpes simplex RTI (*based on Resonant Light Technology's herpes set, most frequencies contracting spread. Also can be used for measles, chicken and small pox, mononucleosis, shingles, rubella, cold sores, epstein barr, variola, stoma stomatosis, and pyor-rhea.*) - 10000, 5000, 3176, 2489, 186, 372, 427, 446, 465, 484, 503, 522, 541, 560, 579, 598, 617, 636, 655, 674, 693, 712, 731, 750, 769, 788, 807, 826, 845, 864, 883, 902, 921, 940, 959, 978, 997, 1016, 1035, 1054, 1073, 1488, 1550, 1568, 1644, 1865, 1909, 2976, 5310, 5952

Herpes TR (*run set three times, pausing 10 minutes between runs. All frequencies can run 60 sec except 2950, which runs 180 sec*) - 2950, 322, 476, 468, 589, 664, 785, 822, 895, 936, 944, 1043, 1614, 1871, 2062, 1489, 3742, 748

Herpes type 1 anec comp (*combines most anecdotal freqs for Simplex I*) - 8650, 7484, 5641, 3742, 2950, 2489, 1871, 1850, 1800, 1614, 1550, 1500, 935.5, 880, 847, 843, 787, 782, 778, 734, 727, 700, 660, 656, 652, 648, 591, 480, 467.8, 428, 343, 339

Herpes type 2 comp - 8778, 1402, 888, 880, 848, 846, 832, 808, 776, 732, 717, 685, 665, 556, 540, 532, 528, 373, 370, 366, 362

Herpes type 2A - 532, 848

Herpes type 2A secondary - 360, 362, 364, 366, 368, 370, 373, 528, 685, 846, 880, 888, 8778, 540, 665, 716, 717, 718, 731, 732, 733, 776, 1402

Herpes type 5 (*cytomegalovirus. 2145**) - 126, 597, 629, 682, 1045, 2145, 8848, 8856

Herpes type C - 395, 424, 460, 533, 554, 701, 745, 2450

Herpes zoster (*chicken pox, shingles. 664**) - 3343, 2320, 2170, 1600, 1500, 1160, 914, 880, 833, 802, 787, 664, 580, 3.9

Herpes zoster 1 (*4 min each freq*) - 10000, 833, 802, 3.9

Herpes zoster secondary - 1550, 802, 1800, 1865, 728, 2720, 2128, 5000, 464, 800, 574, 1557, 304, 20

Herpes zoster v - 7160, 3343, 2431, 2323, 1577, 1544, 40887, 958, 934, 787, 786, 738, 718, 716, 686, 668, 643, 576, 574, 573, 572, 563, 554, 542, 453, 446, 436, 425, 423, 411, 345, 333, 223, 134

Hiatal hernia (*use staph and strep sets*)

Hiccups - 20, 10000

Hip pain (*use also Arthritis*) - 880, 787, 727, 20

Hirudo medicinalis (*a homeopathic remedy prepared from a leech used for therapeutic purposes*) - 128

Histomonas meleagridis HC - 18769.72, 934.49

Histoplasma - 424, 616, 749

Histoplasma capsulatum HC - 15035.69, 748.58

HIV (*see also AIDS*) - 683, 714, 3554, 830, 450

HIV HC - 18172.28, 904.74

Hives (*use Urticaria*)

Hoarseness - 880, 760, 727

Hodgkins disease (*use Cancer, Hodgkin's disease*)

Hookworm (*use Parasites hookworm*)

Hordeolum (*use Sty*)

Hormodendrum (*a genus of fungi that includes human pathogens*) - 663, 678, 695, 532, 627

Hormonal imbalances - 5.5

Hot flashes (*complications*) - 10000, 880, 787, 727

Hot tub folliculitis (*use Pseudomonas freqs*)

Household Insect Mix - 723, 100

Human T lymphocyte Virus1 (*used for MS and autoimmune disease*) - 725, 2432, 243, 6353, 732, 844, 646

Human T lymphocyte Virus2 (*used for Gulf War syndrome*) - 725, 1230, 245, 314, 965

Human T lymphocyte Virus3 (*used for AIDS*) - 633, 1220, 6230, 8225, 111, 392, 776, 837, 1675, 2664, 3806, 714

Human T lymphocyte Virus4 - 444, 2323

Human T lymphocyte Virus5 - 83, 235, 645, 2323, 3432, 4093, 5532

Human T lymphocyte Virus6 - 702, 747, 2245, 183

Hydrocele (*fluid in testicle, etc.*) - 880, 787, 727

Hyperacidity stomach - 7.82, 20, 230

Hyperosmia (*overacute smell and taste*) - 20, 10000, 522, 146

Hyperparathyroidism - 4.6, 9.5, 9.6

Hypertension - 3176, 2112, 20, 95, 324, 528, 15, 9.19, 7.83, 6, 10000, 880, 787, 727, 304

Hypertension renin induced (*red high, diastolic high pressure. Also see Kidney freqs*) - 9.19, 6

Hypertension spastic - 95

Hyperthyroid - 3, 0.5

Hypochondrium upper abdomen - 20, 10000

Hypophyseal disturbances (*pituitary*) - 4

Hypotension (*low blood pressure*) - 20, 727, 787, 880

Hypothyroid - 2, 12, 35, 16000, 10000, 160, 80, 20

Hypoxia (*low oxygen, use also Circulatory stasis*) - 727, 787, 880, 10000



Icterus haemolytic (*a chronic form of jaundice involving anemia*) - 243, 768

Ileocolitis colon inflammation (*also use Colitis if necessary and see Parasite general and roundworm sets*) - 802, 832, 440

Immune system stabilization TR - 330, 10000, 7344, 5000, 1550, 1234, 740, 880, 835, 787, 727, 30

Immune system stimulation - 10000, 5611, 5000, 4014, 3448, 3347, 3176, 2929, 2867, 2855, 2791, 2720, 2489, 2180, 2128, 2008, 1862, 1488, 880, 800, 787, 728, 665, 464, 432, 304, 120, 20, 8

Immune system stimulation 1 - 40.4, 40.5, 40.6, 40.7, 40.8

Impotence (*many classes. Also use Circulatory stasis*) - 9.39, 2127, 2008, 465, 10000, 880, 802, 787, 727, 690, 666, 125, 95, 73, 72, 20, 650, 625, 600

Incontinence 1 (*use all freqs for 10 min*) - 2250, 2050, 2128, 690, 666

Indigestion (*use Dyspepsia*)

Infantile paralysis (*also use Polio*) - 1500, 880, 787, 727, 776, 5000, 10000

Infections general (*see General Antiseptic*) - 1550, 880, 802, 786, 728, 465, 444, 125, 95, 72, 48, 20, 304, 1.2, 5500, 676, 422, 766

Infections general secondary - 5000, 1600, 1500, 832, 776, 760, 700, 690, 666, 650, 625, 600, 1865, 500, 450, 440, 428, 660, 2112

Infections general tertiary - 1800, 2720, 2489, 832, 3040, 2008, 1850, 610, 732, 751, 40000

Infertility (*see also Impotence*) - 2127, 2008, 465, 880, 802,

787, 727, 690, 666, 650, 625, 600, 9.39

Inflammation general (*also see Infection general sets*) - 1.5, 3.6, 2720

Influenzinum Berlin 55 - 430, 720, 733, 787

Influenzinum vesic NW - 332, 364, 519, 588, 590, 238, 239, 715

Influenzinum vesic SW - 433, 645, 658, 824

Influenzinum vesica general (*blisters*) - 203, 292, 588, 612, 975, 407, 682

Influenza (*mutates to new strains constantly but these may be helpful. See also Influenza, Grippe and Influenza Virus. Use all freqs for 5 min if necessary*) - 7766, 7764, 7762, 7760, 7344, 5000, 3672, 2720, 2050, 2008, 1947, 1674, 1550, 1500, 1234, 885, 880, 875, 800, 786, 728, 683, 512, 464, 440, 304, 20

Influenza 1 99 00 - 10000, 880, 727, 330, 728

Influenza 1957 A Asian - 768, 574

Influenza 1978 - 844, 814, 610

Influenza 1979 - 123, 513, 522, 565, 788, 601

Influenza 1983 - 424, 730, 734, 428

Influenza 1989 - 216, 322, 627, 703, 748

Influenza 1993 - 522, 615, 778, 850, 959

Influenza 1993 secondary - 207, 254, 580, 582, 584, 586, 588, 848, 947, 7967, 8910, 739, 741, 760, 765, 773, 915

Influenza 1994 - 689, 697, 699, 798

Influenza 1994 secondary - 337, 690, 868, 869, 702, 727, 729, 776, 779

Influenza 1997 1998 - 2008, 880, 787, 727, 35, 20, 465

Influenza 2 99 00 - 440, 465, 613, 666, 727, 787, 800, 1000, 5000, 10000

Influenza 2003 2004 1 - 7344, 3672, 1234, 880, 743, 727, 683, 464, 452, 333, 72, 200, 93.9, 2720, 2489, 1800, 1600, 1550, 885, 875, 832, 802, 787, 776, 766, 1500, 832, 787, 650, 625, 600, 465, 144, 582

Influenza 2003 2004 2 - 8911.25, 9113.5, 9141.5, 9393.13, 6654.69, 7255, 7284.06, 8041.5, 10334.06, 10346.56, 10976.38, 7414.28, 7631.09, 7632.66, 7667.38, 7676.94, 8045.81, 8082.59, 8305.19, 5548.59, 5549.22, 5554.69, 5554.84, 5558.75, 5560.78, 5562.5, 7118.2, 5045.03, 6752.01

Influenza 2005 fall TR - 2950, 322, 476, 468, 589, 664, 785, 822, 895, 936, 944, 1043, 1614, 1871, 2062, 1489, 3742, 748

Influenza 2005-2006 TR - 2748.8, 5695.9, 2856.7, 2935.4, 4159.2, 4534.4, 2276.3, 2504.5, 3229.4, 6466.6, 1715.1, 4633.9, 4769.4, 1192.6, 599, 2390, 1257.2, 315.7, 5190.7, 1734, 6936.5, 867.9, 434, 217.1, 6951, 4448.9, 6306.3, 4220, 8478, 1216, 1214, 1060, 1010, 935, 778, 777, 465, 457, 445, 433, 425

Influenza A and B HC (*flu shot*) - 15931.86, 15682.93, 793.20, 780.81

Influenza aches and respiratory (*use 7760 and 7766 for 10 min, all others for 5*) - 440, 512, 683, 728, 784, 787, 800, 875, 880, 885, 2050, 2720, 5000, 7760, 7766, 304

Influenza and Cold 1 (*winter 01 to 02*) - 959, 962

Influenza Asian grippe A - 516, 656, 434

Influenza avian exp TR (*sweep from 4896.1 to 5060.9 by .03125 dwell 1*)

Influenza autumn 1998 (*use 8700 and 7760 for 15min*) - 250, 465, 8210, 8700, 7760

Influenza Bach Poly - 122, 350, 487, 572, 634, 768, 823, 1043, 1272, 764, 771

Influenza general 1 (*winter 98 to 99*) - 6984, 6986, 6988, 6990, 6992, 6994, 6996, 6998, 7000, 7002, 7004, 7006, 7008, 7010, 7012, 7014, 7016

Influenza grippe 1986 tri - 532, 588, 660, 662, 664, 666, 668, 670, 994, 462, 712

Influenza grippe 1987 - 140, 332, 581, 953, 4868, 730

Influenza grippe 1988 - 267, 536, 568, 2050, 752, 781

Influenza grippe 1989 - 353, 536, 874

Influenza grippe 1990 - 541, 560, 656

Influenza grippe general - 343, 500, 512, 541, 862, 1000, 1192, 3012, 3423, 10223

Influenza grippe vapch - 153, 343

Influenza haemophilus - 542, 552, 885, 959, 734, 633.1, 2532.4

Influenza haemophilus type B (*can cause a type of meningitis*) - 652, 942, 483, 731, 746

Influenza spanish - 462, 787

Influenza 2005 sweep TR (*long sweep from 9750 to 10156.25 by 0.03125 steps at 0.25 sec duration/step*)

Influenza overnight TR (*Combines many of the CAFL flu frequencies into on large set. TR specifies to pulse 0.25 90, use duration of 90 sec per freq to make approx 8 hr set*) - 10223, 10000, 9090, 8910, 8700, 8250, 8210, 8000, 7967, 7766, 7764, 7762, 7760, 7344, 6984, 6986, 6988, 6990, 6992, 6994, 6996, 6998, 7000, 7002, 7004, 7006, 7008, 7010, 7012, 7014, 7016, 5608, 5000, 4868, 3672, 3423, 3122, 3012, 2720, 2544, 2532.4, 2489, 2558, 2398, 2050, 2008, 1947, 1922, 1800, 1674, 1600, 1550, 1500, 1422, 1272, 1242, 1234, 1215, 1192, 1191, 1186, 1043, 1020, 1000, 995, 994, 985, 984, 969, 967, 962, 959, 954, 953, 947, 946, 945, 942, 932, 922, 915, 895, 889, 885, 880, 878, 875, 874, 869, 868, 863, 862, 861, 850, 848, 844, 841, 839, 836, 833, 832, 823, 814, 802, 800, 798, 788, 787, 786, 784, 782, 781, 780, 779, 778, 777, 776, 773, 771, 770, 768, 766, 765, 764, 763, 762, 761, 760, 758, 757, 756, 753, 752, 750, 748, 746, 745, 743,

742, 741, 740, 739, 734, 732, 731, 730, 729, 728, 727, 726, 724, 722, 720, 715, 713, 712, 703, 702, 699, 697, 690, 689, 687, 683, 680, 679, 678, 676, 674, 672, 670, 668, 666, 664, 663, 662, 660, 656, 653, 652, 651, 650, 649, 647, 640, 632, 634, 633.1, 627, 625, 615, 613, 610, 601, 600, 597, 588, 582, 581, 580, 574, 572, 568, 566, 565, 560, 558, 555, 553, 552, 542, 541, 537, 536, 535, 534, 532, 530, 525, 524, 523, 522, 518, 516, 513, 512, 500, 496, 487, 483, 482, 472, 469, 468, 465, 464, 462, 461, 457, 452, 447, 442, 440, 434, 432, 428, 425, 424, 421, 413, 387, 360, 358, 356, 354, 353, 352, 350, 345, 343, 341, 340, 338, 337, 336, 334, 333, 332, 330, 324, 322, 316, 304, 272, 267, 254, 250, 232, 216, 207, 200, 153, 144, 140, 123, 122, 93.9, 72, 47, 35, 20

Influenza triple nosode - 421, 632, 1242, 1422, 1922, 3122

Influenza V grippe - 861

Influenza V2 grippe - 324, 652, 653

Influenza V3 grippe - 550, 553

Influenza V4 grippe - 232, 352, 2558

Influenza V5 grippe - 945, 518

Influenza V75 Victoria - 343, 316, 1020

Influenza VA2 grippe - 334, 472, 496, 833, 836, 922, 728

Influenza VA2L grippe - 447

Influenza virus 1991 1992 - 153, 345, 387, 758, 984, 985

Influenza virus 1991 1992 secondary - 330, 332, 334, 336, 338, 340, 350, 352, 354, 356, 358, 360, 525, 632, 740, 761, 762, 776, 777, 780

Influenza virus 1992 1993 - 535, 946

Influenza virus 1992 1993 secondary - 272, 534, 566, 668, 674, 776, 782, 947, 632, 640, 713, 715, 742, 773, 777

Influenza virus 1993 1994 - 757, 885, 895, 969

Influenza virus 1993 1994 secondary - 447, 457, 597, 756, 764, 776, 798, 878, 967, 9090, 663, 720, 728, 729, 745, 762, 764, 770, 773, 779

Influenza virus A - 322, 332, 776

Influenza virus A 1974 - 442

Influenza virus A Port Chalmers - 622, 863

Influenza virus B - 468, 530, 532, 536, 537, 568, 722, 740, 742, 744, 746, 748, 750, 1186, 679

Influenza virus B Hong Kong - 555

Influenza virus British - 558, 932

Influenza virus general - 728, 800, 880, 7760, 8000, 8250

Influenza virus swine - 413, 432, 663, 839, 995

Influenza with Fever v - 954, 889, 841, 787, 763, 753, 742, 523, 513, 482, 469, 461, 425, 341, 332

Influenza with respiratory 1 (*winter 99 to 00*) - 47, 1191, 2398, 2544, 5608, 7760, 7766, 672, 674, 676, 678, 680, 647, 649, 651, 653, 1215, 724, 726, 728, 730, 732, 746, 768, 687

Influenzum toxicum - 854

Injection allergic reaction - 10000

Insomnia (*see also Parasite general set*) - 3.59, 3, 7.83, 10, 1550, 1500, 880, 802, 6000, 304

Intelligence and clarity of thought - 20, 10000

Intercostal neuralgia (*pain in rib musculature*) - 3000, 1550, 880, 802, 787, 776, 727, 125, 20, 1865, 444

Interleukin (*used to stimulate lymphocyte production*) - 3448, 2929, 4014, 5611, 2867, 2855, 2791

Intermittent claudication - 45, 48

Intestinal problems colon (*see also Colitis*) - 10, 440, 880, 787, 727

Intestinal problems general (*also see Parasite general set and General antiseptic*) - 802

Intestines inflammation (*see also Colitis*) - 727, 787, 880, 832, 1550, 105, 791

Iodamoeba butschlii HC - 22155.25, 1103.04

Irritable bowel syndrome (*see also Parasites general set and Colitis*) - 6766, 5429, 4334, 2018, 1550, 880, 832, 829, 812, 802, 787, 727, 465, 422, 407, 334, 20

Itching (*pruritis. Take hot bath with a cup of apple cider vinegar afterwards. If chronic and no long term relief, use Parasite sets including Parasites general and Parasites blood flukes.*) - 880, 787, 727, 444, 125, 95, 72, 20, 1865, 3176

J

Jaundice (*see also Liver support, gallbladder, Leptospirosis, and Parasites fluke and general frequency sets*) - 5000, 1600, 1550, 1500, 880, 802, 650, 625, 600, 444, 1865, 146, 250, 125, 95, 72, 20

Jock itch (*use Epidermophyton floccinum*)

Joint inflammation (*also see Arthritis sets*) - 10000

Joint pain basic TR (*also known as Pain.Bio, run 160, 500, 1600, 5000 with pulse 4 60, 1600 500 160 with pulse 2 60, 160 324 528 with pulse 2 60 converge 1 1*) - 160, 500, 1600, 5000, 324, 528

K

Kaposi sarcoma (*use Cancer Kaposi sarcoma*)

Kidney insufficiency - 9.2, 10, 40, 440, 1600, 1550, 1500, 880, 802, 650, 625, 600, 444, 1865, 146, 250, 125, 95, 72, 20

Kidney papilloma (*small, usually benign growth on a kidney*) - 110, 148, 264, 634, 767, 848, 917, 760, 762, 1102

Kidney stimulation TR (*specified by True Rife as may help against infections common in acute renal failure*) - 4412, 2720, 2400, 2112, 1864, 1600, 1550, 1500, 880, 854, 800, 784, 751, 732, 728, 712, 668, 651, 644, 625, 600, 524, 465, 442, 334, 250, 240, 152, 146, 28, 125, 120, 112, 100, 96, 93, 72, 64, 40, 20, 2222, 1153, 1134, 1016, 582, 676, 440

Kidney stones (*use with vitamin, mineral, and herb supplementation*) - 444, 727, 787, 880, 10000, 6000, 3000, 3.5, 1552

Kidney tonic general - 440, 248, 8, 880, 20, 10000, 800, 5000, 3000

Kieferosteitis (*a type of bone inflammation marked by enlargement and pain*) - 432, 516, 384

Klebsiella pneumoniae (*use Pneumoniae klebsiella*)

Knee joint pain - 1550, 880, 802, 787, 727, 28, 20, 7.69, 3, 1.2, 250, 9.6, 9.39

L

L lysine (*stimulates*) - 195.5, 391, 782, 1564.1, 3128.2, 6256.4

Lac deflorat - 230, 371, 232, 2121

Lactobacillus acidophilus HC - 17375.69, 865.08

Lamblia (*use Parasites, Giardia*)

Large intestine tonic - 8, 440, 880

Laryngeal polyp - 765, 202

Larynx - 10, 440, 465, 444, 1550, 880, 802, 787, 727, 28, 7.69, 3, 1.2, 250, 9.6, 9.39

Lateral sclerose (*degeneration of spinal cord leading to spastic paraplegia. See also ALS.*) - 254

Laxative mild - 802

Legionella (*Legionnaires' disease, caused by a gram-negative bacteria associated with condensed or treated water that migrate to lung tissue and stimulate severe respiratory manifestations, fever, headache, abdominal pain, and may affect kidneys and liver.*) - 723, 724, 897, 975, 8120, 8856, 690, 693

Leiomyoma (*use Fibroma*)

Leishman Donovan (*use Parasites, Leishmania*)

Leprosy - 10000, 6000, 743, 600, 252

Leprosy secondary infection - 1600, 1550, 1500, 880, 832, 802, 787, 776, 760, 727, 700, 690, 666, 650, 625, 600, 465, 444, 20, 500, 450, 440, 428, 660

Leptospira interrogans HC - 19865.04, 989.02

Leptospirosis (*a spirochete bacterial disease that is spread to humans through animal urine that can cause meningitis, jaundice, anemia, miscarriage, and death*) - 612, 663

Leukocyto genesis stimulation (*see also Immune system stimulation*) - 20, 727

Leucocytozoon HC - 19914.83, 991.50

Leukoderma acquired (*use Vitiligo*)

Leukoencephalitis (*inflammation of brain's white matter, usually in infants and children, but also found in horses as a result of forage poisoning*) - 324, 572, 776, 934, 1079, 1111, 1333

Leukoencephalitis secondary - 338, 783, 932, 1035, 1160, 1630, 712, 713, 715, 1244

Leukoplakia (*white patches on mucous membranes, also see EBV, Papilloma, and Cancer, carcinoma freqs*) - 465, 2127, 2008, 727, 690, 666

Leukose (*proliferation of tissues that form white blood cells; considered to be foundational stage of leukemia. See also Cancer Leukemia, Parasite general, Parasite fluke sets*) - 612, 633, 653, 3722, 644

Lichen planus TR - 728, 166, 224, 317, 727, 787, 880, 2189, 7344, 4412, 1550, 1234, 740, 880, 787, 727, 330, 10000, 5000, 30

Lichen sclerosus TR - 1600, 500, 160, 324, 528, 7344, 4412, 1550, 1234, 740, 880, 787, 727, 330, 10000, 5000, 30

Lipoma (*benign, soft tumor of fatty tissue. Also use Liver support.*) - 47, 606, 709

Listeriose (*a serious disease causing miscarriage, meningitis, and endocarditis in humans; known as circling disease in ruminants and causes liver necrosis in animals with single stomachs. Also see Strep general and General infection*) - 377, 471, 626, 628, 634, 774, 2162, 7867, 714, 724

Liver enlargement - 727, 787, 880

Liver fluke (*Use Parasites, flukes*)

Liver necrosis (*use Listeriose, Liver support, Parasites schistosoma mansoni*)

Liver stores bile cholesterol - 21.34

Liver support (*also try E coli, Parasites general and Parasites flukes general*) - 33.13, 1552, 802, 751, 331.3

Lockjaw (*use Tetanus*)

Locomotor dysfunction incoordination (*may be slow results. See also Schumann response*) - 10000, 880, 787, 776, 727, 650, 625, 600, 444, 1865, 125, 95, 72, 20

Low blood pressure (*use hypotension*)

Luesinum Syphilitum (*use Syphilis*)

Lumbago - 10000, 800, 880, 787, 727, 125, 95, 72, 444, 1865,

9.19, 8.25, 7.69, 300

Lung (general) - 9, 3672

Lung abscess (use *Nocardia asteroides*)

Lung infection 1 - 10.3, 10.5, 11.8, 11.9, 12.1, 12.4

Lung general tonic - 318, 307.9, 568

Lung sinus bacteria - 244, 1466, 597, 1311

Lupus general (localized degeneration of skin by various diseases; *vulgaris* is a common form of this ailment that is actually a rare form of tuberculosis that manifests with disfigurement and destruction of the skin and cartilage of the face. Also use *Parasite fluke sets* for any type. Use 633 for 5 min, 2125 and 3612 for 4 min, 2008 and 802 for 8 min) - 3612, 2489, 2125, 2010, 2008, 2006, 942, 802, 800, 798, 702, 633, 632, 442, 386, 243

Lupus general secondary - 205, 244, 352, 633, 847, 921, 993, 1333, 1464, 7865, 771

Lupus SLE secondary - 2180, 2128, 2008, 1552, 880, 784, 664, 304, 386, 678, 481

Luxation (dislocation of organs or joints) - 9.1, 110

Lycogala HC - 6273.17, 312.32

Lyme and Rocky Mtn Spotted Fever v - 7989, 1590, 239, 846, 422, 417, 1455, 39975, 40439, 884, 797, 758, 693, 673, 577, 4870, 4880, 578, 128, 579

Lyme disease (also known as *borreliosis*; relapsing fever in humans and animals caused by parasitic spirochetes from ticks. Also use *Babesia* if necessary.) - 6870, 6863, 46866, 46851, 34170, 34112, 4200, 2050, 2016, 1520, 1455, 920, 884, 800, 797, 758, 673, 625, 615, 605, 432, 345, 344, 338, 254

Lyme 1 - 864, 495, 485, 490, 495, 500, 505, 625, 610, 615, 620, 625, 630, 690, 790, 785, 790, 795

Lyme 2 (use 625 for 10 min, 615 for 5 min) - 10000, 6870, 6863, 4200, 2720, 2050, 2016, 1520, 1455, 943, 920, 885, 884, 880, 864, 800, 797, 795, 790, 785, 758, 732, 727, 699, 690, 688, 673, 664, 673, 660, 644, 630, 625, 620, 615, 610, 605, 597, 534, 533, 525, 510, 505, 495, 485, 490, 500, 484, 432, 345, 344, 338, 306, 254, 230, 3

Lyme 3 - 27735768, 1380882.58, 68750.10, 3422.87

Lyme 4 (use 2016 and 625 for 10 min, others for 5 min) - 2050, 1520, 615, 2016, 625

Lyme 5 (use 920 for 10 min) - 920

Lyme 6 (*borrelia afzelli*) - 387500

Lyme 7 (*borrelia burgdorferi*) - 380000

Lyme 8 (*borrelia garinii*) - 382000

Lyme hatchlings eggs - 640, 8554, 203, 412, 414, 589, 667, 840, 1000, 1072, 1087, 1105

Lyme JB - 27735768

Lyme secondary (254*) - 254, 525, 597, 644, 885, 699

Lyme tertiary - 306, 432, 484, 610, 625, 690, 864, 2016, 790

Lyme TR A (Program A, run every other day) - 6675, 4879, 2899, 2720, 2016, 1800, 1600, 1550, 1519, 1455, 1433, 885, 880, 863, 828, 802, 786, 776

Lyme TR B (Program B, run every other day) - 765, 758, 749, 726, 672, 604, 600, 581, 464, 451, 432, 345, 250, 144, 62

Lymph plaque - 596, 346

Lymph stasis (use 3176 for 10 minutes) - 3176

Lymph stasis secondary (also see *Lymphangitis*) - 6.3, 148, 522, 146, 444, 440, 880, 787, 727, 10000, 2.5, 465, 10

Lymph support - 15.05, 10.36, 3176

Lymphangitis (lymphatic vessel inflammation of humans and horses most commonly caused by strep but also by other bacteria, yeast fungus, and cancer. See also *Strep General*) - 880, 574, 778, 1120, 1078, 3176

Lymphogranuloma (use *Cancer, Hodgkin's disease*)

Lymphs and detox - 10000, 3177, 3176, 3175, 880, 787, 751, 727, 676, 635, 625, 522, 465, 444, 440, 304, 148, 146, 15.2, 15.05, 10.36, 10, 7.83, 6.3, 2.5

Lymph mover - 100000

Lyssinum (use *Rabies*)

M

Macular degeneration and visual acuity (use with *Cataracts freqs* if necessary, 1830*) - 8, 1830, 1832, 1834, 1836, 1838, 1840, 1842, 1844, 1846, 1848, 1850, 1852, 1854, 1856, 1858, 1860

Macular degeneration 1 - 0.6, 1.1, 1.4, 1.9, 9.9, 10, 21, 23.6, 24, 25.6, 26.7, 32, 34.1, 410

Magnesium - 480

Malabsorption syndrome (use with *Parasites, General set*) - 727, 787, 880, 800, 1552, 3000

Malaria (an infectious disease, originating in tropical areas, that is transmitted by a mosquito bite and characterized by fever, anemia, and spleen enlargement. Also use *wormwood annua*. Also see *Perniciosia*) - 4, 20, 28, 222, 550, 713, 880, 930, 1032, 1433, 1444, 1445, 455, 743

Malaria 1 - 20, 555

Malaria 2 - 20, 28, 787, 880

Malaria 3 (all freqs 5 to 15 min each) - 880, 800, 787, 728, 20

Malaria Falciparum 1 - 1518, 1348, 1473, 1002, 1019

Malassezia furfur (*causes tinea versicolor. See also Fungus general*) - 222, 225, 491, 616, 700

Mamma fibromatosis (*use Breast, fibroid cysts*)

Mange follicular - 253, 693

Mannan - 961, 661

Marsh elder - 474

Mastitis (*an inflamed breast usually caused by bacterial infection*) - 654, 698

Mastoiditis (*inflammation of the bony structure of the head in the region of the ears below the eyes*) - 287

Measles - 727, 787, 880, 342, 442, 443, 467, 520, 521, 552, 1489, 745, 757, 763, 712

Measles HC (antigen) - 18471.00, 919.62

Measles rubella (*German or 3 day measles*) - 431, 459, 510, 517, 796, 967, 368, 734, 772

Measles rubella secondary - 727, 787, 880

Measles rubella vaccine - 429, 459, 832, 926, 505

Measles rubeola (*9 day measles*) - 342, 467, 520, 784, 787, 962, 1489

Measles vaccine - 214, 725, 747, 783, 962

Measles w vaccine (*try for autism*) - 1489, 962, 880, 787, 783, 763, 757, 747, 745, 727, 725, 712, 552, 521, 467, 443, 342, 214

Medorrhinum (*homeopathic nosode for urethral discharge. See also Vaginosis.*) - 230, 442, 554, 843, 854, 1700, 1880, 2222, 602

Menieres 1 - 8.8, 8.9, 9.0

Menieres 2 - 456.6, 723, 880

Menieres disease (*auditory vertigo associated with deafness and tinnitus. Use 5000 for 16 min, 782 for 26 min, others for 7 min. Also use General antiseptic*) - 1550, 802, 880, 787, 727, 465, 428, 33, 329, 5000, 1130, 782, 9

Meningococcus Virus - 720

Meningioma (*a benign, slow-growing tumor of the membranes that envelop the brain and spinal cord*) - 446, 535, 537

Meningitis (*inflammation of the membranes that envelop the brain and spinal cord. Bacterial: also use Streptococcus pneumoniae, Influenza haemophilus type B and see Listeriose and Leptospirosis. Viral: also use Echo, Coxsackie, and Polio*) - 5000, 1795, 1422, 1044, 928, 822, 764, 733, 720, 517, 427, 423, 322, 20

Meningitis secondary - 130, 676, 677, 507

Meningitis tertiary - 1550, 802, 880, 832, 787, 727, 650, 625, 600, 465, 444, 1865, 125, 95, 72, 20, 428, 660

Menopause symptoms TR - 880, 787, 727, 5.5

Menstrual problems (*douche with plain water first*) - 880, 1550, 802, 787, 727, 465, 20

Mental concentration - 10000, 7.82

Mental disorders (*general aid; especially if toxins are the cause. Also use mineral supplement*) - 522, 146, 10000, 125, 95, 72, 20, 4.9, 428, 550, 802, 7.83

Mercury toxicity v - 47, 48, 49, 75

Methotrexate toxicity - 584

Microsporum audouini (*a fungus which commonly causes ringworm of the scalp and other areas*) - 422, 831, 1222, 285

Microsporum canis (*a fungus causing ringworm in cats, dogs, and children*) - 347, 970, 1644, 402, 650

Migraine (*also use Parasites strongyloides and general sets*) - 10

Mold (*see also specific types*) - 222, 242, 523, 565, 592, 623, 745, 933, 1130, 1155, 1333, 1833, 4442

Mold and fungus general v (*see also specific types*) - 4442, 2411, 1833, 1823, 1333, 1155, 1130, 1016, 942, 933, 886, 880, 866, 784, 774, 766, 745, 743, 728, 623, 623, 594, 592, 565, 555, 524, 512, 464, 414, 374, 344, 337, 321, 254, 242, 222, 158, 132

Moles - 20, 120, 177, 600, 625, 626, 650, 659, 660, 728, 784, 880, 464

Moles 1 (*use 761.7 for 15 min, others for 10 min*) - 761.7, 650, 625, 600, 76.2

Mononucleosis (*use Epstein Barr virus*)

Monotospora languinosa (*homeopathic remedy for fungal allergen*) - 788

Morbillinum - 467, 520, 1489

Morbus Parkinson (*use Parkinson's disease*)

Morgan (*bact*) - 778, 784, 787, 788, 988, 726

Morgellons disease TR - 5858.25, 5856.375, 4271.25, 4264, 330, 10000, 7344, 5000, 1550, 1234, 740, 880, 835, 787, 727, 160, 500, 1600, 5611, 4014, 3448, 3347, 3176, 2929, 2867, 2855, 2791, 2720, 2489, 2180, 1862, 1488, 880, 800, 787, 728, 665, 464, 432, 304, 120, 30, 20, 8, 920, 2016, 625

Motion sickness (*also see nausea*) - 10000, 5000, 648, 624, 600, 465, 440, 648, 444, 1865, 522, 190, 146, 125, 95, 72, 20

Mouth eruptions herpes (*use Herpes and Herpes Simplex I*)

Mouth eruptions white patches (*use leukoplakia*)

Mucocutan perniciosus - 833, 667, 756

Mucor mucedo (*causes rot in fruit and baked goods & sometimes found on feet and skin*) - 612, 1000, 488, 766, 9788, 735

Mucor plumbeus - 361, 578, 785, 877

Mucor racemosus (*grows on decaying vegetation and bread and*

can cause ear infection) - 310, 474, 875

Mucor racemosus secondary - 473, 686, 871, 873, 876, 878, 887, 7768, 7976, 8788, 713, 729, 731, 751, 760, 778, 1200

Mucormycosis (*use Zygomycosis*)

Mucous membrane inflammation general - 380

Mucoviscidosis (*use Cystic fibrosis*)

Multiple sclerosis 1 (*use 5000 for 30min*) - 5000, 4992, 23570.5, 3767, 3056.9, 2720, 2466.9, 2252.8, 2213, 2189, 2088.59, 1883, 1875, 1550, 1331, 880, 854, 840, 802, 787, 784, 728, 690, 660, 624, 620, 524, 470, 464, 430, 421, 317, 304.6, 275, 253, 241.68, 235, 224, 218, 166, 143, 80.9, 20

Multiple sclerosis 2 - 5000, 23570.5, 3056.9, 2466.9, 2252.8, 2088.59, 880, 787, 728, 690, 660, 304.6, 241.68, 80.9, 20

Multiple sclerosis 3 - 2253, 2467, 2357, 2358, 242, 305, 2089, 3057, 81, 5000, 1550, 802, 880, 787, 728, 690, 660, 20

Multiple sclerosis 4 - 3040, 5000, 2720, 10000, 470, 120, 240, 300, 328, 728, 880, 2005, 2006, 2007, 2008, 2009, 2010, 2011, 20

Multiple sclerosis 5 (*use 5000 for 30 min*) - 5000, 728, 166, 224, 317, 727, 787, 880, 218

Multiple sclerosis 6 (*use 5000 for 10 min*) - 10000, 6000, 5000, 3176, 2489, 3057, 2008, 2358, 1488, 2467, 3040, 880, 787, 800, 728, 665, 464, 242, 224, 304, 166, 120, 20

Multiple sclerosis brain - 0.3, 140, 158, 166, 169, 190, 199

Multiple sclerosis brain infection - 2.6, 2.8, 5.1, 6.7, 7.2, 7.5, 11.3

Multiple sclerosis myelin sheath repair - 4.4, 8, 9.4, 9.5, 9.8, 12.6, 13.3, 14.2, 14.4, 14.8, 225, 259, 280

Multiple sclerosis secondary - 20, 143, 275, 430, 470, 524, 620, 624, 802, 840, 854, 1550, 2213, 5000, 728, 784, 880, 464

Multiple sclerosis stiff legs - 315.77

Multiple sclerosis tremor or twitch - 470

Multiple sclerosis v (*aspartame, mercury, benzene, lead, and toluene can cause same symptoms. Also use Chlamydia General and Herpes type 6 and see ALS sets, Herpes general, Blastocystis hominus, Parasites flukes, Shigella, Nocardia, and Herpes zoster*) - 2145, 938, 862, 841, 741, 739, 682, 660, 572, 532, 520, 477, 442, 433, 344, 343, 342, 338, 324, 322, 253, 242, 112

Mumps (*acute viral inflammation of the saliva glands. See also Coxsackie*) - 152, 242, 642, 674, 922

Mumps HC (*antigen*) - 19018.66, 946.88

Mumps secondary - 190, 235, 516, 1243, 1660, 2630, 3142, 9667, 729, 741, 759, 761, 1170

Mumps tertiary - 10000, 727, 2720, 2489, 2127, 2008, 428, 880, 787, 727, 20

Mumps vaccine - 273, 551, 711, 730, 1419

Muscle tonic - 20, 120, 240, 300, 304, 324, 328, 728, 880, 5000, 10000

Muscles to relax - 965, 20, 120, 240, 760, 6.8, 6000, 304

Muscular dystrophy (*disorder characterized by weakness and progressive wasting of skeletal muscles despite no concomitant wasting of nerve tissue. Aspartame, mercury, benzene, lead, and toluene can cause same symptoms. Also use Parasites flukes and see Parasites general, ALS, MS sets*) - 153, 522, 146, 880, 787, 727

Muscular pain and injury (*also see Pain and General antiseptic*) - 2720, 6000, 324, 320, 250, 240, 160, 125, 80, 40, 20, 10, 5.8, 2.5, 1.5, 1.2, 1, 0.5

Mycobacterium phlei HC - 20412.70, 1016.29

Mycobacterium tuberculosis HC (*causes tuberculosis*) - 21508.01, 1070.82

Mycogone fungoides - 488, 532, 662, 764, 852, 1444

Mycogone fungoides secondary - 328, 367, 490, 491, 495, 496, 628, 678, 761, 766, 768, 1055, 1074, 9979, 709, 714, 729, 746, 757

Mycogone spp (*homeopathic allergenic preparation based on fungus*) - 371, 446, 1123, 748

Mycoplasma fermentans (*May be a factor in ALS, chronic fatigue, alzheimer's, parkinson's, and MS*) - 2900, 878.2, 880.2, 864, 790, 706.7, 690, 610, 484, 986, 644, 254

Mycoplasma general (*can be useful for lung, sinus, and other problems which do not respond to other frequencies*) - 7344, 2950, 2900, 2842, 1147, 1113, 1067, 1062, 1045, 969.9, 880.2, 878.2, 865, 829.3, 800.4, 790, 783.6, 779.9, 706.7, 690.7, 690, 686.6, 684.1, 679.2, 673.9, 664, 644, 610, 484, 254

Mycoplasma HC - 16106.12, 17226.33, 801.88, 857.65

Mycoplasma pneumonia - 688, 975, 777, 2688, 660, 709.2, 2838.5

Mycoplasma pulmonis - 2404.2, 601, 300.5, 150.3, 75.1

Mycoplasma salivarium 1 (*run each for 18 min after building up*) - 253, 279, 420, 453, 761, 832

Mycosis fungoides (*a form of skin cancer resembling eczema*) - 532, 662, 678, 852, 1444

Myocarditis narbe (*narbe means scar*) - 279, 761

Myocarditis necrose (*homeopathic remedy from heart cells that died as a result of inadequate blood flow to them. See also Circulatory stasis*) - 706, 789

Myoma (*a benign tumor on the uterus*) - 253, 420, 453, 832

Myositis (*involves progressive muscle weakness*) - 120, 122, 125, 129, 1124, 1169, 762

Myxosoma HC - 20611.85, 1026.20

N

Naegleria fowleri HC - 18022.92, 897.31

Nanobacter (Nanobacterium sanguineum, a nanobacteria which can be found in some calcium deposits in the arteries, kidneys, gallbladder, muscle and joints as well as in increased numbers in those with "autoimmune" diseases such as lupus, psoriasis, scleroderma, and similar disorders) - 634, 317, 1268, 1902

Nanobacteria 2 - 6771.59, 6772.13, 6749, 6773.44, 6772.29, 6725.50, 5965.19, 5198.33, 5543.65, 5631.24, 9916.73, 8798.81, 8661.95, 4628.34, 4128.50, 2931.45, 2208.53, 2100.67

Nanobacteria 3 - 13543.18, 13543.89, 13544.26, 13544.49, 13546.48, 13546.88, 13544.59, 13545.21, 13546.95, 11930.39, 10396.66, 9916.73, 8798.81, 8661.95, 4628.34, 4128.50, 2931.45, 2208.53, 2100.67

Nanobacteria sanguineum TR - 7635.45, 6653.86, 6346.71, 5631.24, 5543.65, 2962.14, 2642.24, 1876.13, 1413.46, 1344.43, 1902, 317

Nasal infection (use Sinusitis and/or Rhinitis)

Nasal polyp (benign growth inside the nasal passage) - 542, 1436

Nasturtium (a healing herb) - 143

Nausea and cramping (also see Parasites, enterobiasis, round-worms, and Parasites, general for chronic conditions) - 72, 95, 190, 880, 832, 787, 727, 20, 4, 9

Nematodes (Use Parasites, nematodes)

Neoplasms (Use cancer)

Nephritis (kidney inflammatory disease. Also treat for stones and crystals supplementally, or nephrosis non inflammatory kidney disease) - 1550, 274, 423, 636, 688, 880, 787, 727, 10, 20, 10000, 40, 73, 465, 3000

Nerve disorders and neuropathy - 10000, 3176, 2720, 2489, 2170, 2112, 1800, 1600, 1550, 880, 802, 787, 727, 660, 650, 625, 600, 440, 125, 95, 72, 20, 7.83, 3

Nerves healing - 200, 10, 7.64

Nervousness Prozac agitation (akathisia. See also Relaxation) - 3, 7.83

Neuralgia (a painful disorder of the nervous system) - 833, 3, 9, 10000

Neuralgia intercostal - 802

Neuralgia trigeminal - 880

Neurosis - 28

Neurospora sitophila - 705, 878

Nigrospora spp - 302, 350, 764

Nocardia asteroides (the microorganism causing Nocardiosis, an infectious pulmonary disease characterized by abscesses in the lungs. Also see Streptothrix.) - 228, 231, 237, 694, 719, 747, 887, 2890

Nocardia asteroides HC (found in Parkinson's disease) - 17679.39, 880.20

Nogier frequencies - 1.14, 2.28, 4.56, 9.125, 18.25, 36.5, 73, 146, 292, 584, 1168, 2336, 4672

Nose infection congestion (use Sinusitis and Rhinitis)

Numbness (also see Circulatory stasis) - 10000, 2720, 2489, 2170, 1800, 1600, 1550, 802, 880, 787, 727, 650, 625, 600, 440, 660



Oat smut - 806

Oligodena - 853

Oospora - 9599, 5346

Oral lesions (chronic cases will always return until metal dental work is replaced with uranium free porcelain. See also herpes simplex I and use Stomatitis) - 2720, 2489, 2008, 1800, 1600, 1550, 802, 880, 787, 727, 465, 444, 522, 146

Orchitis (inflammation of testes due to TB, mumps, gonorrhea, cancer, bacteria, etc. See also causative condition if known) - 2720, 2489, 2170, 2127, 2008, 1800, 1600, 1550, 802, 1500, 880, 832, 787, 776, 727, 690, 666, 650, 625, 600, 125, 95, 72, 20, 9

Orchitis secondary - 727, 787, 880, 10000

Ornithosis (Psittacosis or Parrot Fever; an infectious pneumonia transmitted by certain birds) - 233, 331, 332, 583, 859, 1217

Osteitis (bone inflammation) - 770

Osteoarthritis (use also Arthritis) - 962, 1500, 770

Osteoitis - 2.65

Osteomyelitis - 2720, 2489, 2170, 2127, 2008, 1800, 1600, 1550, 802, 1500, 880, 832, 787, 776, 727, 690, 666

Osteomyelosclerosis (marrow replacement by bone in response to low-grade infection) - 79, 330

Osteosinusitis max - 243, 327

Ostitis - 770, 743, 736, 724

Otitis externa (outer ear infection. Also see Pseudomonas aeruginosa) - 727, 787, 880, 174, 482, 5311

Otitis medinum (middle ear swelling and or infection and fever. Use also strep pneumonia if no immediate benefits. Use 880, 720, and 1550 for 10 min, others for 5 min) - 683, 688, 776, 766, 316, 784, 786, 125, 802, 72, 522, 440, 880, 720, 1550

Otosclerosis - 9.19

Ovarian cyst - 567, 982, 711

Ovarian disorders general - 2720, 2489, 2170, 2127, 2008, 1800, 1600, 1550, 1500, 982, 880, 832, 802, 787, 776, 727, 711, 690, 666, 650, 625, 600, 567, 465, 444, 26, 20

Ovarian elimination stimulation - 20, 800, 1550

Ovum - 752

Ox bile (*the homeopathic remedy derived from it*) - 672

Ozaena - 184, 222, 439

P

Pain acute - 3000, 95, 10000, 1550, 802, 880, 787, 727, 690, 666

Pain general (*Also look under name of condition causing pain*) - 3000, 2720, 95, 666, 80, 40

Pain of cancer - 3000, 95, 2127, 2008, 727, 690, 666

Pain of infection - 3000, 95, 880, 1550, 802, 787, 776, 727, 4.9

Pain relief - 304, 6000, 3000, 666, 80

Palsy general - 10000

Pancreas - 440, 464, 600, 624, 648, 1552, 727, 787, 880

Pancreatic insufficiency - 20, 250, 650, 625, 600, 465, 444, 26, 2720, 2489, 2170, 2127, 2008, 1800, 1600, 1550, 802, 1500, 880, 832, 787, 776, 727, 690, 666, 20

Papilloma kidney (*small, usually benign growth on a kidney*) - 110, 148, 264, 634, 767, 848, 917, 760, 762, 1102

Papilloma virus (*causes warts and benign tumors having a branch or stalk and in some cases white patches known as leukoplakia, 874*, 907**) - 67265, 64734, 16970, 9609, 9258, 5657, 1051, 1011, 907, 874, 767, 489, 466, 404, 265, 110, 45

Papilloma virus cervix HC (*smear*) - 20128.91, 1002.16

Papilloma virus plantar wart HC - 20163.76, 1003.

Papilloma virus wart HC - 20263.34, 1008.85

Paraceli - 232

Paradontose - 424, 1552

Paralysis nonspastic - 10000, 880, 787, 776, 727, 650, 625, 600, 444, 1865, 125, 95, 72, 20, 9.19, 8.25

Paralysis spastic - 10000, 880, 787, 776, 727, 650, 625, 600, 444, 1865, 125, 95, 72, 20, 7.69

Paramecium caudatum - 4500, 1150, 2298

Paramyxovirus (*experimental, types avian 6 and tupaia*) - 8920.5, 8089.4, 4460.2, 4044.7, 2230.1, 2022.3, 1115.1, 1011.2, 557.5, 505.6, 278.8, 252.8, 139.4, 126.4

Parasites ancylostoma braziliense HC (*Dog and cat hookworm, the larva of which is the most common cause of cutaneous larva migrans aka creeping eruption. Also see Parasites hookworm*) - 19964.61, 993.98

Parasites ancylostoma caninum HC - 19914.83, 991.50, 19566.32, 974.15, 19217.81, 956.80

Parasites ascaris (152*) - 152, 442, 8146, 751, 1146, 797

Parasites ascaris HC (*larvae in lung*) - 20313.12, 1011.33

Parasites ascaris megalcephala HC - 20313.12, 1011.33

Parasites capillaria hepatica HC - 21308.87, 1060.91

Parasites clonorchis sinensis HC - 21259.08, 1058.43

Parasites cryptocotyle lingua HC - 20611.85, 1026.20

Parasites dirofilaria immitis HC (*dog heartworm*) - 20362.91, 1013.81

Parasites echinoparyphium recurvatum HC - 20960.36, 1043.55

Parasites echinostoma revolutum HC - 21308.87, 1060.91

Parasites enterobiasis (*pinworms; intestinal worms which cause itching of the anal and perianal areas*) - 20, 112, 120, 773, 826, 827, 835, 4152

Parasites enterobius vermicularis HC - 21059.93, 1048.51

Parasites eurytrema pancreaticum HC - 20960.36, 1043.55

Parasites fasciola hepatica HC - 21159.50, 1053.47

Parasites fasciola hepatica cercariac HC - 21259.08, 1058.43

Parasites fasciola hepatica eggs HC - 21159.50, 1053.47

Parasites fasciola hepatica miracidia HC - 21059.93, 1048.51

Parasites fasciola hepatica rediae HC - 21159.50, 1053.47

Parasites fasciolopsis buskii adult HC - 21607.59, 1075.78

Parasites fasciolopsis buskil eggs HC - 21607.59, 1075.78

Parasites fasciolopsis cercariae HC - 21607.59, 1075.78

Parasites fasciolopsis miracidia HC - 21607.59, 1075.78

Parasites fasciolopsis rediae HC - 21508.01, 1070.82

Parasites filariose (*worms in blood and organs of mammals, larvae passed from biting insects*) - 112, 120, 332, 753

Parasites fiscoedrius elongatus HC - 22005.88, 1095.61

Parasites flukes blood - 847, 867, 329, 419, 635, 7391, 5516, 9889

Parasites flukes general (*pancreatic, liver, and intestinal*) - 6766, 6672, 6641, 6578, 2150, 2128, 2082, 2013, 2008, 2003, 2000, 1850, 945, 854, 846, 830, 763, 676, 651, 524, 435, 275, 142

Parasites flukes general short set - 524, 854, 651

Parasites flukes intestinal (2127/2128*) - 524, 651, 676, 844, 848, 854, 2128, 2008, 2084, 2150, 6766

Parasites flukes liver - 143, 275, 676, 763, 238, 6641, 6672

Parasites flukes lymph - 10050, 157

Parasites flukes pancreatic 1 - 1850, 2000, 2003, 2008, 2013, 2050, 2080, 6578

Parasites flukes sheep liver - 826, 830, 834

Parasites follicular mange - 253, 693, 701, 774

Parasites gastrothylax elongatus HC - 22653.12, 1127.83

Parasites general 1 - 4412, 2400, 2112, 1862, 1550, 800, 732, 728, 712, 688, 676, 644, 422, 128, 120

Parasites general 2 - 10000, 3176, 1998, 1865, 1840, 880, 800, 780, 770, 740, 728, 727, 690, 665, 660, 465, 444, 440, 125, 120, 95, 80, 72, 47

Parasites general alternative v - 4122, 1522, 967, 942, 854, 829, 827, 749, 741, 732, 633, 605, 604, 591, 524, 422, 411, 344, 172, 102

Parasites general comprehensive - 10000, 5000, 4412, 2720, 2400, 2112, 1864, 1550, 1360, 880, 854, 800, 784, 751, 732, 728, 712, 688, 651, 644, 524, 465, 442, 422, 334, 240, 152, 128, 125, 120, 112, 96, 72, 64, 20

Parasites general short set - 20, 64, 72, 96, 112, 120, 152, 651, 732, 1360, 2720, 10000

Parasites gen custom2 TR (*sweep 2000 to 2008 by 1 dwell 360*) - 6578, 2000, 831, 2000, 2008, 2520, 689, 750, 880, 650, 187

Parasites giardia - 5768, 5429, 4334, 2163, 2018, 1442, 829, 812, 721, 407, 334

Parasites giardia lamblia HC - 21109.72, 1050.99

Parasites gyroductylus HC - 18919.09, 941.93

Parasites haemonchus contortus HC - 19566.32, 974.15

Parasites heartworms - 543, 2322, 200, 535, 1077, 799, 728

Parasites helminthsporium (*worm eggs*) - 793, 969, 164, 5243

Parasites hookworm - 6.8, 440, 2008, 6436, 5868

Parasites leishmania braziliensis - 787

Parasites leishmania braziliensis HC - 20064.19, 998.94

Parasites leishmania donovani - 525, 781

Parasites leishmania donovani HC - 19914.83, 991.50

Parasites leishmania mexicana HC - 20014.40, 996.46

Parasites leishmania tropica - 791

Parasites leishmania tropica HC - 20163.76, 1003.89

Parasites loa loa HC - 17973.13, 894.83

Parasites macracanthorhynchus HC - 21906.31, 1090.65

Parasites metagonimus yokogawai HC - 21906.31, 1090.65

Parasites nematode - 771

Parasites onchocerca volvulus HC (*tumor*) - 21906.31, 1090.65

Parasites paragonimus westermani HC - 22503.75, 1120.40, 22254.82, 1108.00

Parasites passalurus ambiguus HC - 21956.10, 1093.13, 21756.95, 1083.21

Parasites pinworm (*use Parasites, enterobiasis*)

Parasites roundworms comp - 7159, 5897, 4412, 4152, 3212, 2720, 2322, 1372, 1113, 1077, 1054, 942, 835, 827, 826, 822, 799, 776, 773, 772, 753, 752, 749, 746, 738, 732, 728, 722, 721, 698, 688, 650, 543, 541, 535, 422, 380, 332, 240, 200, 152, 128, 120, 112, 104, 101, 20

Parasites roundworms general - 7159, 5897, 4412, 4152, 3212, 2720, 942, 835, 827, 772, 732, 721, 688, 650, 543, 422, 332, 240, 152, 128, 120, 112, 104, 20

Parasites roundworms general short set - 128, 152, 240, 422, 650, 688

Parasites roundworms flatworms TR (*use when there is chronic pain from these. 40 min each with converge 1 0.03125 or 1 0.03333*) - 6187.5, 6468.8, 5050

Parasites scabies (*follicular mange which is contagious dermatitis found in many animals that is caused by mites and in which the principle activity is at the hair follicles. Use 90, 94, 98, 102, 106, 110, 253, 693 for 10 min. Scan 90 to 110 on lesser frequency intervals if needed. Also, rub skin with olive oil, let sit, then rinse with thyme tea*) - 920, 1436, 2871, 5742, 90, 94, 98, 102, 106, 110, 253, 693

Parasites schistosoma haematobium (*blood flukes*) - 847, 867, 635

Parasites schistosoma haematobium HC - 23549.28, 1172.45

Parasites schistosoma mansoni (*blood fluke which can cause symptoms identical to hepatitis C*) - 329, 9889

Parasites stephanurus dentalus (*ova*) - 22951.84, 1142.70

Parasites strongyloides (*threadworm, genus of roundworms*) - 332, 422, 721, 732, 749, 942, 3212, 4412

Parasites strongyloides HC (*filariform larva*) - 19914.83, 991.50

Parasites strongyloides secondary - 380, 698, 752, 776, 722, 738, 746, 1113

Parasites taenia (*use Parasites, tapeworms*)

Parasites tapeworms (*if any of these frequencies are felt strongly, also use a good herbal antiparasitic regimen plus CoQ10 in large amounts, 187*, 5522**) - 164, 187, 453, 523, 542, 623, 843, 854, 1223, 803, 1360, 3032, 5522

Parasites tapeworms echinococcinum (*tapeworms found in dogs, wolves, cats, & rodents that can infect man, 5522**) - 164, 453, 542, 623, 5522

Parasites tapeworms secondary - 142, 187, 624, 662

Parasites threadworms (*use Parasites, strongyloides*)

Parasites trichinella spiralis HC (*found in muscle*) - 20138.87, 1002.66

Parasites trichinosis - 101, 541, 822, 1054, 1372

Parasites trichomonas vaginalis HC - 18968.87, 944.40

Parasites trichuris sp HC (*male*) - 20213.55, 1006.37

Parasites trypanosoma brucei HC - 21358.65, 1063.38

Parasites trypanosoma cruzi HC (*brain tissue*) - 23051.41, 1147.66

Parasites trypanosoma equiperdum HC - 22055.67, 1098.09, 22005.88, 1095.61, 21707.16, 1080.74

Parasites trypanosoma gambiense HC - 19715.68, 981.59

Parasites trypanosoma lewisi HC (*blood smear*) - 21159.50, 1053.47

Parasites trypanosoma rhodesiense TR - 21209.29, 1055.95

Parasites turbatix - 104

Parasites urocleidus HC - 22254.82, 1108.00

Paresis - 9.4

Paresthesia - 5.5

Parkinson tremor temporary relief (*use 6000 for 10 min*) - 6000, 470, 130, 169

Parkinsons disease (*a slowly progressive, degenerative, neurologic disorder, also use Mycoplasma fermentans, try Chlamydia pneumoniae, and see Nocardia asteroides freqs. Use 33 for 30 min, 33**) - 470, 693, 813, 1.1, 5000, 6000, 1131, 33

Parkinsons v - 4334, 1422, 871, 840, 827, 813, 744, 742, 733, 658, 611, 577, 569, 531, 524, 442, 314, 310, 172, 134

Parrot Fever (*use Ornithosis*)

Parvovirus canine - 637, 185, 323, 562, 613, 622, 1000, 4027

Parvovirus canine mutant strain - 323, 514

Parvovirus canine type B - 323, 535, 613, 755

Parvovirus new strain - 2257, 488

Pasteurella combination (*bacterial diseases spread by animal bites*) - 323, 913, 694

Pelvic inflammatory disease - 2950, 2976, 2720, 2489, 2170, 2127, 2008, 1800, 1600, 1550, 1488, 802, 787, 776, 727, 690, 666, 650, 625, 600, 465, 444, 522, 95, 72, 450, 428

Pemphigus (*rare, autoimmune skin disorders characterized by blisters in the outer layer of skin and mucous membranes*) - 694, 893, 665

Penicillium chrysogenum - 129, 249, 344, 967

Penicillium chrysogenum secondary - 345, 688, 868, 1070, 2411, 728, 764, 765

Penicillium notatum - 334, 629

Penicillium notatum secondary - 321, 550, 555, 556, 558, 560, 562, 566, 572, 644, 825, 922, 942, 4870, 7780, 412, 715

Penicillium rubrum - 332, 457, 460, 462, 766, 1015, 1018

Pennyroyal (*an herb*) - 772

Pepto streptococcus (*see also other Strep sets*) - 201, 629

Pericarditis (*NOTE, Cardiac conditions are inherently unstable. Therefore, we cannot recommend the use of frequencies on humans, even outside U.S. jurisdiction. These frequencies are for animal research only.*) - 2720, 2170, 1600, 880, 1550, 802, 787, 727, 625, 125, 95, 72, 20

Periodontal disease (*see also osteo and dental infection freqs*) - 47.5, 1800, 1600, 650, 625, 600, 880, 787, 776, 727

Peritonitis - 727, 787, 880

Perniciosia (*scilicet malaria, extremely severe form of malaria*) - 232, 622, 822, 4211

Perniosis (*chillbains. A disorder of the blood vessels caused by prolonged exposure to cold and characterized by skin lesions on the lower legs, hands, toes, feet, ears and face*) - 20, 232, 622, 822, 4211, 2112

Pertussis (*whooping cough*) - 526, 765, 46, 284, 9101, 697, 906

Pertussis secondary - 880, 832, 802, 787, 776, 727, 1234, 7344

Pesticide detox (*see also Liver and Kidney support, Circulatory and Lymph stasis freqs*) - 73, 26, 6, 1

Phaocycross stimulation - 20, 125, 727, 787, 880

Pharyngitis (*inflammation of pharynx, can cause chronic sore throat, halitosis, and pharyngeal ulcers. Also see Sore throat, Halitosis*) - 440, 380, 1600, 1550, 802, 776, 784, 880, 727, 20, 522, 146

Phlebitis (*vein inflammation*) - 1500, 776

Phoma Destructiva (*homeopathic*) - 163, 815, 621

Pineal gland stimulation - 20

Pingueculum (*conjunctival tumors. Pingu eculum is the medical term for a common white or yellow raised area on the conjunctiva; mostly a hint to a neurolymphatic condition.*)

Plague (*use Bubonic plague*)

Planetary orbits (*brainwave freqs, from mercury to pluto*) - 141.27, 221.23, 272.2, 144.72, 183.58, 295.7, 414.7, 422.8, 280.5

Plantaris - 2008

Plasmacytoma (*use Cancer plasmacytoma*)

Pleurisy (*Inflammation of the lung membrane and abdominal lining*) - 1550, 802, 880, 787, 776, 727, 125, 95, 72, 20, 444, 1865, 450

Pneumococcus (*use Streptococcus pneumoniae*)

Pneumocystis carinii (*fungus which causes pneumonia usually developing in the immune suppressed or in infants*) - 204, 340, 742

Pneumonia 1 - 10346.56, 10976.38, 5045.03, 5548.59, 5549.22, 5554.69, 5554.84, 5558.75, 5560.78, 5562.5, 6752.01, 7118.2, 7255, 7284.06, 7414.28, 7631.09, 7632.66, 7667.38, 7676.94, 8045.81, 8041.5, 10334.06, 8082.59, 8305.19, 8911.25, 9113.5, 9141.5, 9393.13, 6654.69

Pneumonia 2 - 986, 987, 988

Pneumonia bronchial (*inflammation of bronchii and lungs*) - 550, 802, 880, 787, 776, 727, 452, 1474, 578

Pneumonia general (*see also Pneumonia klebsiella, Pneumonia mycoplasma, Pneumonia bronchial, Pneumonocystis carinii, Streptococcus pneumoniae. If no or slow results, try Mycoplasma General set.*) - 7660, 7344, 5000, 3702, 3672, 2688, 1862, 1550, 1238, 1234, 1200, 975, 880, 802, 787, 780, 778, 776, 774, 772, 770, 768, 766, 727, 688, 683, 660, 450, 412, 352, 20

Pneumonia general v - 6007, 5423, 5421, 5420, 5419, 2688, 2581, 2356, 967, 877, 838, 765, 748, 746, 568, 542, 532, 522, 520, 440

Pneumonia mycoplasma (*a contagious pneumonia of children and young adults. See also Mycoplasma General*) - 688, 975, 777, 2688, 660, 709.2, 2838.5

Pneumonia walking (*use Pneumonia mycoplasma*)

Pneumoniae klebsiella (*causes an acute, bacterial pneumonia*) - 840, 818, 783, 779, 776, 766, 765, 746, 413, 412

Pneumoniae klebsiella HC - 19964.61, 20860.78, 1038.60, 993.98

Pneumovirus (*causes bronchiolitis and pneumonia in infants, use Respiratory syncytial virus*)

Polio (*also known as poliomyelitis*) - 135, 283, 742, 776, 1500, 2632, 1850

Polio secondary complications - 1550, 802, 428, 1500, 880, 787, 727

Polyarthritis - 512

Polyp general - 522, 146, 2720, 2489, 2170, 2127, 2008, 1800, 1600, 727, 690, 666, 650, 625, 600, 465, 444, 20

Polyp nasal - 542, 1436

Polyp uterine - 689

Porphyria (*several rare disorders of the nervous system and skin*) - 698, 780

Postsurgery detoxification (*also use saunas and electrolyte replacement*) - 522, 146

Proctitis (*use Chlamydia trachomatis*)

Propionibacterium acnes (*may be secondary cause of some prostate cancers. Sweep from 5996.1 to 6078.1 by 0.03125 dwell 1 pulse 64 75 plus 6046.9 for 6 min*) - 6046.9

Propionibacterium acnes HC - 19267.60, 959.28

Prostate adenominum - 442, 688, 1875, 748, 766

Prostate enlarged (*see Prostatitis and other prostate sets and Strep general*) - 2250, 2128, 2050, 920, 690, 666

Prostate hyperplasia (*use Prostate enlarged*)

Prostate problems general (*see also Strep sets and practice metals avoidance*) - 2720, 2128, 2008, 880, 802, 787, 728, 727, 690, 666, 465, 408, 125, 95, 72, 20, 9

Prostatitis (*benign prostate tumor or infection*) - 100, 410, 522, 146, 2720, 2050, 2489, 2170, 2127, 2008, 1550, 802, 787, 776, 727, 690, 666, 465, 125, 95, 72, 20, 444, 522, 9.1

Prostatitis 1 (*use 2050 and 2250 for 15 min*) - 2050, 2250

Proteus - 424, 434, 834

Proteus mirabilis HC - 16131.01, 803.12

Proteus vulgaris HC (*urinary tract pathogen*) - 20562.06, 16728.45, 16330.16, 1023.72, 832.86, 813.03

Pruritis (*use Itching*)

Pseudomonas aeruginosa (*bacteria causing blue pus infections found in wounds, burns, and the urinary tract, et al*) - 174, 482, 785, 1132, 5311, 3965, 405, 633, 191, 178, 731, 6646, 178, 739.8, 2959.4

Pseudomonas aeruginosa HC (*causes infection in open wounds*) - 16579.09, 825.42

Pseudomonas gen - 6646, 5311, 3965, 2959.4, 1273, 1132, 986, 875, 857, 785, 774, 743, 739.8, 737, 731, 687, 633, 501, 482, 437, 405, 191, 178, 174

Pseudomonas mallei (also called *glanders bacillus*. Causes *glanders*, a blue pus infection of the respiratory system and mouth, and transmitted occasionally to man by equine.) - 986, 737, 687, 857, 875, 1273, 501, 743, 774

Pseudomonas pyocyanea - 437

Psittacosis (use *Ornithosis*)

Psoriasis (also use *Hypothyroid set* and see *General Parasite*, *ascaris*, and other roundworm freqs) - 2720, 2489, 2180, 2170, 2128, 2008, 1552, 880, 800, 786, 728, 664, 304, 152, 112, 104, 100, 96, 64, 60

Psoriasis ankylosing spondylitis - 3000, 95, 1550, 802, 880, 787, 776, 727, 650, 625, 600, 28, 1.2, 10, 35, 28, 7.69, 110, 100, 60, 428, 680

Psorinum - 786, 767

Ptosis (*Eyelid droop*. Also use *Parasite general*, *ascaris*, and *roundworm*)

Pullularia pullulans (*allergy remedy*) - 432, 873, 1364, 684, 739, 750

Pulmonary fibrosis (use also *Parasite*, *roundworm frequencies* and see *General Antiseptic*) - 27.5, 220, 410

Pyelitis proteus (*bacteria commonly found in hospital-borne conditions*) - 434, 594, 776

Pyocyaneus (*homeopathic nosode for Pseudomonas pyocyanea*) - 437

Pyoderma (or *Pyoderma Gangrenosum*; a rare skin disorder of unknown cause. Small pustules develop into large ulcers at various sites on the body. Also see *Parasites general* and *General antiseptic*) - 123, 132, 967, 974, 1556, 1489, 663

Pyorrhea (*Infection of periodontium causing inflammation of gums and bone loss. Although pyorrhea may be controlled or eliminated with treatment, infection will always return whenever subject experiences stress or poor diet, until mercury inlays aka 'silver' fillings and nickel alloy which is stainless steel, dental appliances are replaced with porcelain that does not contain uranium and infected root canals and sockets are treated. See also Dental, Dental foci, Stomatitis, Gingivitis, Toothache*) - 2720, 2489, 2008, 1800, 1600, 1550, 802, 880, 787, 776, 766, 727, 465, 444, 522, 146

Pyrogenium 62 (*general homeopathic remedy for pus*) - 151, 429, 594, 622, 872, 497, 498

Pyrogenium ex ovo - 231, 1244, 1210, 1216

Pyrogenium fish - 287, 304

Pyrogenium mayo - 688, 759, 1625, 727, 770

Pyrogenium suis - 341, 356, 673

Q

Q Fever (*an infectious disease caused by contact with animals with the parasitic Rickettsia bacteria and Coxiella burnetii whose symptoms may include headache, fever, chills, and sweats. See also Typhoid fever and Rickettsia*) - 523, 1357, 607, 129, 632, 943, 1062, 549, 720, 726

R

Rabies (*lyssinum*) - 20, 120, 547, 793

Radiation burns (also see *Regeneration and Healing*) - 727, 787, 880, 10000

Ragweed - 473

Raynauds disease - 727, 20

Refractory an - 435

Regeneration and healing - 47, 2720

Regeneration and healing 1 - 2720, 2.0, 20.5, 3.9, 4.0, 50.5, 6.3, 148, 7.0

Relaxation to produce - 6000, 10, 7.83

Renal calculi (use *Kidney stones*)

Renal excretory insufficiency diastolic hypertensive (also see *Kidney insufficiency*) - 9.2

Reproductive - 335, 536, 622, 712

Respiratory syncytial virus - 336, 712, 278

Respiratory syncytial virus HC - 18919.09, 941.93

Retrovirus variants - 2489, 465, 727, 787, 880, 448, 800, 10000

Rhesus gravidatum - 312, 322, 536, 684

Rheuma (*watery discharge from nose or eyes*) - 952, 436, 595, 775

Rheumaticus - 333, 376, 820

Rheumatism (also use *Arthritis rheumatoid*) - 10000, 776, 766, 262

Rheumatoid arthritis (use *Arthritis rheumatoid*)

Rhinitis (*runny nose, also see Sinusitis*) - 20, 120, 1550, 802, 1500, 880, 787, 727, 465, 522, 146

Rhino pneumonitis - 185, 367, 820, 487

Rhizopus nigricans - 132, 327, 775, 659, 660

Rhodo torula - 833, 598, 778

Rhodococcus - 124, 835, 432, 764, 337, 682, 720

Rickettsia (*bacteria that are transmitted to man by lice, fleas, ticks, and mites. Can cause typhoid fever and Q fever.*) - 129, 632, 943, 1062, 549, 720, 726, 521, 2085, 4170

Ringworm (*see Microsporium audouini, Microsporium canis, Trichophyton, and/or Epidermophyton. Use all freqs for 6 min*) - 5000, 800, 732, 442, 440, 422, 128, 120, 92, 76, 60

Roaches (*may target a symbiot*) - 100

Rocky Mountain spotted fever - 375, 862, 943, 788, 468, 308

Rocky Mtn Spotted Fever and Lyme v - 7989, 1590, 239, 846, 422, 417, 1455, 39975, 40439, 884, 797, 758, 693, 673, 577, 4870, 4880, 578, 128, 579

Rosacea (*use Helicobacter pylori and take enzyme supplement*)

Roseola (*use Herpes type 6*)

Rotifer - 4500

Rubella (*use Measles rubella*)

Rubeola (*use Measles rubeola*)

Ruko tick - 6634, 285, 308

S

Sacred numbers - 70, 72, 99, 144, 153, 1260, 3142

Salivary gland virus (*human herpes type 5. Use Cytomegalovirus*)

Salmonella (1) - 718.2, 713.3

Salmonella (*can cause intestinal inflammation and infection, and contribute to flu in children*) - 1522, 718, 717, 713, 972, 664, 643

Salmonella comp - 8656, 7771, 6787, 1634, 1522, 1244, 972, 773, 762, 754, 752, 719, 718.2, 717, 713.3, 711, 707, 693, 664, 643, 546, 420, 165, 92, 59

Salmonella enteritidis HC (*causes intestinal infection*) - 16379.95, 815.51

Salmonella paratyphi B - 59, 92, 643, 707, 717, 719, 752, 972, 7771, 1244, 6787, 165, 711

Salmonella paratyphi HC - 18321.64, 912.18

Salmonella type B - 546, 1634

Salmonella typhi (*can cause typhoid fever*) - 420, 664, 8656, 773

Salmonella typhimurium - 693, 754, 762

Salmonella typhimurium HC (*can cause food poisoning, nervousness, apathy*) - 19168.02, 19217.81, 954.32, 956.80

Sanguinera (*use Nanobacter*)

Sanguis menst - 591

Sarcocystis HC - 22503.75, 1120.40

Sarcoidosis (*also see Cancer, lymphogranuloma*) - 2167, 2967, 3289

SARS 1 - 9563, 6157, 5513, 3735, 1559, 33566, 255616, 1556, 2286, 5763, 8015, 162, 563, 5613, 5235

SARS 2 - 597.68, 769.62, 689.14, 937.76, 779.5, 524.47, 1048.94, 499.25, 998.5, 778.12, 1143, 720.36, 1001.86, 648, 563, 701.6, 654.4

Scabies (*use Parasites scabies and Mange follicular*)

Scarlet fever - 437, 880, 787, 727, 690, 666

Schistosoma (*use Parasites, schistosoma*)

Schizophrenia paranoid 1 (*also see Tuberculosis*) - 802, 1500, 1550

Schumann resonance (*Earth frequencies which may be relaxing*) - 7.83, 14, 20, 26, 33, 39, 45

Schunan B Cell - 322, 425, 561, 600, 620, 623, 780, 781, 950, 952, 1023, 1524, 1097, 1100

Sciatica 1 (*also use "Bone Builder with Boron" at double dose*) - 254, 464, 465, 866, 15, 25.4

Sciatica 2 - 782, 732, 860

Sciaticor schias - 1550, 802, 880, 787, 727, 690, 666, 10

Scleroderma v - 4334, 42046, 44178, 49847, 55687, 67868, 75969, 35237, 54778, 44837, 39703, 31888, 34112, 36769, 42938, 38882, 48686, 30121, 64734, 44679, 70542, 48450

Sclerosis lateral (*degeneration of spinal cord resulting in spastic paraplegia*) - 254

Sedation and pain relief - 304, 6000

Sedative effect (*Reported use on bleeding, bruises, insomnia, sinusitis*) - 2.5

Seizure 1 - 329, 226, 953

Semperillium - 1140

Serratia marcescens HC - 17475.26, 870.04

Serum schweinepest (*swine fever or hog cholera*) - 503, 246, 604, 465

Sexual dysfunction men (*see also Circulatory stasis, Orchitis*) - 9.39, 2112, 2127, 2008, 465, 880, 802, 787, 727, 690, 666, 124, 95, 73, 72, 20, 650, 625, 600

Shigella (*can cause acute dysentery and diarrhea as well as infect nerves, brain, and spinal cord chronically*) - 621, 762, 769, 770, 1550, 802, 832

Shigella dysenteriae HC - 19421.39, 966.93

Shigella flexneri HC (*causes depression*) - 19616.10, 976.63

Shigella sonnei HC (*invades tumors*) - 15832.29, 788.24

Shingles (*use Herpes zoster*)

Silver - 15903

Simian virus 40 (*SV40, also try for throat and sinus issues*)
- 7635.45, 6653.86, 6346.71, 5631.24, 5543.65, 2962.14, 2642.24, 1876.13, 1413.46, 1344.43, 83173.3, 93806.5

Sinus Bacteria (*also use Sinusitis*) - 548

Sinusitis (*sinus and lung infections can be caused by a large number of pathogens including viruses like RSV, adenovirus, para-influenza, influenza A, influenza B, rhino virus, et al. Common bacteria like strep pneum. are always suspect when condition is chronic, as are fungi.*) - 952, 741, 682, 320, 160

Sinusitis 1 (*all freqs for 5 min*) - 1862, 1600, 1552, 1500, 880, 802, 784, 732, 728, 712, 683, 660, 548, 524, 464, 440, 400, 146, 120, 72, 20

Sinusitis 2 - 125, 160, 367, 472, 600, 615, 625, 650, 820, 952, 1150, 1520, 1865, 2000, 4392, 4400, 4412

Sinusitis 3 - 60, 95, 128, 225, 414, 427, 432, 456, 610, 614, 618, 1234, 2600, 5500, 304

Sinusitis 4 - 107, 160, 952, 942, 320, 741, 682, 1395

Sinusitis frontalis - 952, 320, 682

Sinusitis maxillaris - 160, 741

Sinusitis stubborn TR - 10000, 7344, 5000, 2950, 2900, 2650, 2600, 1550, 1234, 740, 880, 787, 727, 330, 165, 82.6, 41.75, 20.87, 30

Sleeping sickness - 120, 20

Slipped discs (*spasms from microbial toxins*) - 125, 880, 787, 728, 727, 95, 72, 20

Smallpox (*also known as variola, an extremely contagious viral disease marked by fever, prostration, and a rash of small blisters*)
- 3222, 2544, 2132, 1644, 1550, 876, 832, 802, 569, 542, 511, 476, 142

Smallpox secondary - 334, 360, 471, 647, 506, 711, 880, 787, 727, 20

Smegma - 153, 180, 638

Sneezing - 880, 787, 727, 683, 465, 146

Solfeggio scale - 852, 741, 639, 528, 417, 396

Sore throat (*also see Pharyngitis, Strep general, Strep pyrogenes, and Actinomyces israelii*) - 2720, 2489, 1800, 1600, 1550, 802, 885, 880, 875, 787, 776, 727, 46.5, 766

Sore throat 1 - 34464, 14080, 4192, 3552, 2720, 2489, 2154, 1800, 1600, 1550, 802, 885, 880, 875, 787, 776, 727, 46.5, 766, 222, 262

Sore throat comp - 34464, 14080, 10000, 8450, 7880, 5004, 4192, 3552, 2720, 2502, 2489, 2154, 2111, 1998, 1840, 1800, 1600, 1560, 1550, 1214, 1000, 925, 885, 880, 875, 845, 802, 787, 776, 766, 747, 735, 727, 720, 690, 666, 660, 625.5, 624, 616, 590, 567, 522, 488, 465, 440, 432, 380, 340, 262, 222, 151, 146, 120, 46.5, 23

Sore throat TR - 2720, 1800, 144, 452

Sorghum smut (*homeopathic preparation for an allergen*) - 294

Sorghum syrup HC - 13791.02, 686.61

Spasms muscle - 6.8

Spastic paresis - 30.87, 48

Sphaerotilus natans HC - 19466.74, 969.19

Spirillum serpens HC - 18919.09, 941.93

Spleen enlarged - 35, 787, 3176

Spleen secondary - 10000, 2720, 2170, 1800, 1550, 880, 802, 727, 465, 20

Sporobolomyces - 753, 700

Sporotrichum pruticosum - 584, 598, 687, 755, 715

Stammering - 10000, 20, 6000, 7.83

Staph infection 1 - 943, 727, 643, 20

Staph and Strep v - 40887, 9646, 7160, 2431, 1902, 1109, 1060, 1050, 1010, 985, 958, 934, 786, 727, 718, 686, 643, 576, 563, 542, 453, 436, 423, 411, 333, 134, 128

Staphylococci infection (*see also other Staph freqs, 727*, 786**) - 960, 727, 786, 453, 678, 674, 550, 1109, 424, 943, 1050, 643, 2600, 7160, 639, 1089, 8697

Staphylococcus aureus (*can cause boils, carbuncles, abscesses, tooth infection, heart disease, and infect tumors, 786**) - 8697, 7270, 1050, 999, 943, 824.4, 787, 784, 745, 738, 728, 727, 647, 644, 555, 478, 424

Staphylococcus aureus HC (*tooth infection, abscesses, heart disease, invades tumors*) - 18819.51, 936.97, 18968.87, 944.40

Staphylococcus coagulae positive - 643

Staphylococcus comp - 40887, 9646, 8697, 7270, 7160, 2600, 2431, 1902, 1109, 1089, 1060, 1050, 1010, 999, 985, 960, 958, 943, 934, 884, 882, 880, 878, 876, 824.4, 787, 786, 784, 745, 738, 728, 727, 718, 686, 678, 674, 647, 644, 643, 639, 634, 576, 563, 555, 550, 542, 478, 453, 436, 424, 423, 411, 333, 134, 128

Staphylococcus general (728*, 786*) - 7160, 1109, 1089, 885, 884, 883, 882, 881, 880, 879, 878, 877, 876, 875, 786, 728, 674, 639, 634, 550, 453

Stemonius HC - 10505.07, 523.02

Stemphylium - 461, 340, 114

Sterigmatocystin HC - 6621.68, 6273.17, 4779.56, 4381.26, 329.67, 312.32, 237.96, 218.13

Stiff muscles comp - 6000, 1800, 1550, 880, 802, 787, 776, 776, 766, 728, 727, 328, 320, 304, 300, 250, 240, 160, 125, 80, 40, 20, 10, 9.19, 6, 5.8, 4.9, 2.5, 1.5, 1.2, 1, 0.5

Stiff muscles - 320, 328, 304, 300, 240, 160, 776, 728, 1800, 125, 80, 40, 20, 6000

Stiff muscles secondary - 250, 10, 5.8, 2.5, 1.5, 1.2, 1, 0.5, 1550, 802, 880, 787, 776

Stiff neck - 4.9, 6, 9.19

Stiff shoulder (see also *Rheumatism*) - 10000, 727, 766, 20

Stigeoclonium HC - 20512.27, 1021.25, 20263.34, 1008.85

Stomach disorders (see also *E. Coli and Parasites general if no lasting relief*) - 2127, 2008, 1552, 880, 832, 802, 784, 727, 690, 676, 664, 450, 422, 125, 95, 72, 20, 3.9

Stomach gas - 50, 51, 52, 53, 56, 59

Stomatitis (*Inflammation of mucous membranes in the mouth. See also Candida, Herpes simplex I, Stomatitis aphthous, Pyorrhea, and Gingivitis*) - 465, 677, 702, 787, 234, 278, 568, 672

Stomatitis aphthous (*ulcers on mucous membrane of mouth. Also called canker sores. All freqs for 5 min*) - 478, 487, 498, 788, 955, 982, 1902, 1904, 1906

Stomatitis aphthous 1 (*all freqs for 5 min*) - 1901, 1902, 1903, 1904, 1905, 1906, 1907

Stomatitis aphthous v - 888, 880, 848, 846, 831, 685, 742, 734, 1043, 944, 782, 591, 480, 423, 343, 339, 322, 832, 556, 808, 534, 460, 424, 246

Strep and Staph v - 9647, 40887, 7160, 2431, 1902, 1109, 1060, 1050, 1010, 985, 958, 935, 786, 727, 718, 686, 643, 576, 563, 542, 453, 436, 423, 411, 333, 134, 128

Strep mutans (use *Strep viridans*)

Strep sweep TR (*sweep for strep pneumonia, group G, and pyogenes strains. Sweep from 5632.8152 to 5763 by 0.015625 and 5763 to 6053.125 by 0.03125 for dwell 0.25 and pulse 64 75*)

Strep virus - 563, 611, 727

Streptococcus enterococcinum (*can cause infection in the digestive and urinary tracts*) - 686, 409

Streptococcus hemolytic (*blood infection by strep, 1522*, 535*, 368*, 318**) - 728, 880, 786, 712, 128, 134, 334, 443, 535, 542, 675, 1415, 1522, 1902, 691, 710, 1203, 368, 318

Streptococcus infection general (*streptococcus family. Also see General antiseptic and other Strep sets, 880**) - 2000, 1266, 885, 884, 883, 882, 881, 880, 879, 878, 877, 876, 875, 848, 802, 800, 787, 784, 727

Streptococcus lactis HC (*occurs in milk*) - 19168.02, 954.32

Streptococcus mitis HC (*lung infection, tooth infection, abscesses, stiff knees*) - 15832.29, 788.24

Streptococcus mutant strain - 114, 437, 625, 883, 994

Streptococcus mutant strain secondary - 108, 433, 488, 687, 833, 8686, 8777, 9676, 660, 732, 745, 754, 764

Streptococcus pepto (*can infect digestive tract*) - 201, 629

Streptococcus pneumoniae (*can cause pneumonia, empyema, middle ear infections, endocarditis, peritonitis, arthritis, bacteremia, and meningitis, 683*, 688**) - 231, 232, 683, 688, 776, 766, 728, 846, 1552, 8865

Streptococcus pneumoniae HC (*pneumonia, inner ear disease*) - 18321.64, 912.18

Streptococcus pneumoniae hi alt - 1136.7, 2273.4, 46275, 46065.5, 46000, 45856, 23138, 23032.8, 23000, 22938, 4546.9, 18187.4, 36374.8, 72749.6, 625.5, 20015.3, 40030.6

Streptococcus pneumoniae mixed flora - 158, 174, 645, 801

Streptococcus pyogenes (*pus forming infections. Can cause sore throat, skin inflammation, scarlet fever, pharyngitis, scarlet fever, impetigo, erysipelas, cellulitis, septicemia, toxic shock syndrome, and acute glomerulonephritis See also General antiseptic*) - 10000, 5004, 8450, 2502, 2111, 1214, 880, 880, 845, 787, 776, 735, 727, 720, 660, 625.5, 616, 465, 20

Streptococcus pyogenes HC (*infects teeth*) - 18570.58, 924.57

Streptococcus sp group G HC - 18321.64, 912.18

Streptococcus viridans (*425*, 433**) - 425, 433, 445, 935, 1010, 1060, 8478, 457, 465, 777, 778, 1214, 1216

Streptomyces griseus (*soil bacteria which yields streptomycin*) - 333, 887

Streptothrix (*includes Actinomycosis, Nocardia, and Actinomyces israeli*) - 10000, 7880, 7870, 2890, 2154, 887, 787, 784, 747, 727, 678, 567, 488, 465, 262, 237, 231, 228, 222, 192, 157, 20

Stroke follow up (*ensure adequate water, minerals especially magnesium, and omega 3 intake and consider using enzymes like bromelain to inhibit clotting*) - 2112, 3, 203, 1800, 880, 787, 727, 650, 625, 600, 125, 95, 72, 1865, 522, 428, 10000, 20, 2720

Strongyloides (use *Parasites, strongyloides*)

Struma (*family of organisms that can infect the thyroid causing goiter. Use kelp internally. Use Struma cystica, nodosa, and parenchyme freqs.*)

Struma cystica - 5311, 531, 756, 361

Struma nodosa - 105, 122, 321, 517, 532, 651, 714

Struma parenchyme - 121, 576

Stye (*staph infection of sebaceous gland of eyelash. Also use Staphylococci infection set*) - 10000, 880, 787, 727, 20, 453, 2600

Subluxation induced disorders - 9.6

Sudor pedis (*excessive foot sweat*) - 148

Sun allergy (*Examine prescription drugs, such as Psoralen, for photo sensitization properties.*) - 3, 330, 10000

Sunstroke - 444, 440, 190, 3000, 95, 522, 146, 880, 20, 10000

Surgery anaesthesia detox (*see also Liver support*) - 522, 146

Surgery preop postop prevent infections (*see also General antiseptic, Staph, and Strep sets*) - 2170, 1800, 1600, 1550, 802, 1500, 880, 832, 802, 787, 776, 727, 465, 444, 522, 146, 428

Surgical pain post op - 3000, 2720, 95

SV40 (*use Simian virus 40*)

Swelling (*edema. See also Kidney insufficiency and Lymph stasis freqs*) - 522, 146, 6.3, 148, 444, 440, 880, 787, 727, 20, 10000, 5000, 3000

Swimmers ear (*also see Pseudomonas aeruginosa and Otitis externa. To help prevent, always disinfect and dry ears after using public pools with 40% alcohol solution such as vodka or white rum*) - 728, 784, 880, 464, 174, 482, 5311

Swollen glands (*use Lymph and see Mumps freq sets as appropriate*)

Syphilis - 6600, 789, 900, 2776, 177, 650, 625, 600, 660, 658

T

T-lymph virus TR - 8225, 6353, 6230, 3806, 2664, 2432, 1675, 1230, 1220, 965, 844, 837, 776, 732, 725, 714, 646, 633, 392, 314, 245, 243, 111

Tachycardia (*rapid heart beat. For lab animals only. See also Heart tonic, Relaxation sets.*) - 1.2

Taenia (*use Parasites tapeworm*)

Tainio sweep (*sweep from 42 to 72 Hz in small intervals, at most 1Hz, to possibly stimulate the immune system*)

Taste lack of - 10000, 20

Tendomyopathy - 320, 250, 160, 80, 40, 20, 10, 5.8, 2.5, 1.5, 1.2, 1, 0.5

Tetanus (*infectious disease of the central nervous system caused by clostridium tetani*) - 15770, 1200, 1142, 880, 700, 628, 600, 554, 465, 458, 400, 363, 352, 244, 234, 120, 20

Tetanus secondary - 880, 787, 727

Tetragenus - 393, 433, 2712

Thalamus stimulant - 20

Thermi bacteria - 233, 441

Throat tickle chronic (*see also Streptococcus and Strep pneumonia sets*) - 120, 666, 690, 727, 787, 800, 880, 1560, 1840, 1998, 766, 776

Thrombophlebitis (*inflammation of vein walls from clotting. Use on lab animals only. See also Circulatory stasis and Stroke followup*) - 1500, 776, 685

Thrombosis infective herpes type (*not to be used with arrhythmia or in U.S.*) - 2720, 2489, 2170, 1800, 1550, 802, 880, 787, 727, 444, 125, 95, 72, 20, 444, 1865, 1489

Thrush (*use Candida and see Stomatitis freqs*) - 414, 465

Thymus stimulation - 20

Tinea cruris (*use Epidermophyton floccinum*)

Tinea pedis (*use Trichophyton mentagrophyte*)

Tinea versicolor (*use Malassezia furfur*)

Tinnitus (*see also Circulatory stasis, Dental, Dental foci, General antiseptic, and Otitis freqs*) - 20, 2720, 728, 784, 880

Tobacco mosaic - 233, 274, 543, 782, 1052

Tobacco mosaic virus HC - 21308.87, 1060.91

Tonsillar nodules - 246, 151, 414

Tonsillar nosode - 1656

Tonsillitis (*inflammation of tonsils*) - 1.2, 73, 1550, 802, 1500, 880, 832, 787, 776, 727, 650, 625, 600, 465, 144, 452, 582

Tooth extraction followup (*see also General antiseptic set*) - 3000, 2720, 95, 47.5, 7.82

Toothache (*to neglect this can prevent recovery from any illness. Should also be treated professionally. See also Dental, Dental foci, Gingivitis, Pyorrhea.*) - 5170, 3000, 2720, 2489, 1800, 1600, 1550, 1500, 880, 832, 802, 787, 776, 776, 727, 666, 650, 646, 600, 465, 190, 95, 47.5

Toxin elimination - 0.5, 522, 146, 1552, 800

Toxoplasma HC (*human strain*) - 19665.89, 979.11

Toxoplasmosis (*a serious, infectious disease that can be either acquired or present at birth and that is commonly contracted by handling contaminated cat litter*) - 434, 852

Trachoma (*use Chlamydia trachomatis*)

Transformation series (*includes 18 ZOBET, 6 of which are the Sacred Solfeggio, 9 Activation, One KI, and the Sacred Spiral*) - 9999, 147, 174, 417, 714, 741, 258, 285, 528, 582, 825, 852, 369, 396, 639, 693, 936, 963, 2664, 3330, 3996, 774, 855, 1584, 1746, 2475, 2556, 9990, 144, 234, 378, 612, 991, 1604

Trauma - 96, 192, 300, 760, 3000

Trench mouth (*use Gingivitis*)

Treponema pallidum (*use also Syphilis*) - 660, 902

Treponema pallidum HC (*causes syphilis*) - 17276.11, 860.13

Trichinosis (*use Parasites trichinosis*)

Trichodermia - 711

Trichomonas (*a microorganism causing vaginal irritation with discharge and itching*) - 610, 692, 980

Trichophyton general - 132, 725, 808, 812, 2422, 9493

Trichophyton mentagrophytes

Trichophyton nagel - 381, 585, 593, 812

Trichophyton nagel secondary - 133, 142, 373, 376, 378, 385, 387, 420, 425, 428, 576, 578, 580, 581, 583, 584, 587, 588, 592, 595, 597, 724, 725, 726, 750, 794, 797, 801, 805, 808, 809, 817, 886, 2422, 6887, 7688, 7697, 7885, 584, 587, 592, 732, 733, 738, 748, 765, 766, 771, 777, 778, 779, 1256

Trichophyton rubrum -- 752, 923

Trichophyton tonsuraus - 454, 765

Trigeminal neuralgia - 2720, 2489, 2170, 1800, 1600, 1550, 802, 7.5, 880, 832, 787, 776, 760, 727, 650, 146, 7.82, 27.5, 428

Troglodytella abrossari HC - 19068.45, 949.36, 20860.78, 1038.60

Trypanosoma gambiense - 255, 316, 403, 700, 724

Tuberculinum - 332, 522, 664, 731, 737, 748, 1085, 1099, 1700, 761

Tuberculosis (*also see Tuberculinum. Some think some chronic lung infections can actually be a mild case of TB and recommend to run a TB set periodically, especially after traveling on airplanes and/or abroad. 1552*, 802**) - 8030, 16000, 1840, 1600, 1552, 1550, 1513, 1500, 803, 802, 784, 740, 727, 720, 690, 666, 583, 541, 369, 216, 20

Tuberculosis aviare - 303, 332, 342, 438, 440, 532, 3113, 6515, 697, 698, 720, 731, 741, 748, 770

Tuberculosis bovine - 229, 523, 625, 635, 838, 877, 3353, 748, 757

Tuberculosis klebsiella - 217, 220, 221, 686, 1132, 1644, 2313, 6516, 729, 748

Tuberculosis rod E coli infections - 799, 802, 804, 1550, 1513

Tuberculosis rod form (803*) - 8030, 369, 583, 541, 802, 803, 1513

Tuberculosis secondary complications - 776, 2127, 2008, 465

Tuberculosis virus (1552*) - 2565, 1552

Tularemia (*a serious infectious disease also called deerfly fever or rabbit fever*) - 324, 427, 823

Tumor brain (*use Cancer, astrocytoma, glioma, glioblastoma*)

Tumor benign - 1, 10, 10.2, 10.4, 10.6, 10.8, 11

Turbatrix - 104

Typhoid fever (*typhus infection related symptoms causing high fever, headache, and rash. Also use Salmonella typhi and Rickettsia and see Q fever.*) - 9680, 18620, 13944, 6900, 3205, 1868, 1866, 1864, 1862, 1860, 1800, 1550, 1445, 900, 869, 824, 802, 760, 714, 712, 690

U

Ulcer duodenal - 676, 727, 750, 880, 10000

Ulcer gastric - 676

Ulcer parasites - 3, 3.5, 4, 6.8, 9.9

Ulcer ventric - 142, 566, 676, 232, 1000

Ulcer ventricular - 769, 760

Ulcers general - 676, 664, 802, 784, 2489, 2170, 2127, 1800, 1600, 880, 832, 802, 787, 776, 727, 73

Urea plasma - 756

Uremia (*also known as uremic poisoning; excessive amounts of nitrogenous waste products in the blood, as seen in kidney failure. Also use Kidney and Lymph stasis freqs.*) - 911

Urethritis (*also see Vaginitis and use Chlamydia trachomatis*) - 2720, 2170, 2127, 1800, 1600, 1550, 802, 1500, 880, 832, 787, 776, 727, 660, 650, 625, 600, 465, 444, 1865, 125, 95, 72, 1.2

Urinary Tract Infections (*also see Bacterium coli sets*) - 2050, 880, 1550, 802, 787, 727, 465, 20, 9.39, 642, 358, 539

Urticaria (*hives, often due to toxins*) - 1800, 880, 787, 727, 522, 146, 4.9

Uterine polyp - 689

V

Vaccinium (*a homeopathic nosode*) - 476

Vaginitis (*non-specific infection. Also see Gardinerella, Candida, and Trichomonas*) - 414, 542, 642, 652, 800, 832, 845, 866, 942, 728, 784, 880, 464

Varicella (*use herpes zoster*)

Varicoses - 1.2, 28

Variola (*use Smallpox*)

Vegetative dystonia (*involuntary muscle dysfunction*) - 40

Veillonella dispar HC - 20064.19, 998.94

Vein thrombosis (*use Thrombophlebitis*)

Verruca (*use Wart verruca*)

Vertigo (also use *Otitis, Meniere's, and see General antiseptic freqs*) - 60, 5.8, 4

Vertigo TR - 880, 802, 784, 787, 786, 766, 522, 727, 720, 688, 683, 652, 645, 316, 72, 92, 60, 58, 40, 1550

Viral complex TR - 10000, 7344, 5000, 2950, 2900, 2650, 2600, 1550, 1234, 430, 620, 624, 646, 866, 5148, 2213, 1918, 742.4, 303, 23.2, 20, 864, 790, 690, 610, 470, 484, 986, 644, 254, 30, 33, 6000, 599, 611, 613, 2127, 2080, 2050, 2013, 2008, 2003, 2000, 1850, 880, 803, 800, 787, 727, 660, 484, 465, 440, 35, 500, 200, 68

Vision poor (see also *Cataracts. Run 1830 for 15 minutes.*) - 350, 360, 1830

Visual acuity (run 1830 for 10 minutes) - 3176, 1860, 1856, 1852, 1848, 1846, 1842, 1838, 1834, 1830, 1826, 1822, 1818, 1814, 1810, 1806, 1802, 360, 350

Vitamag complete set - 1, 2, 3, 4, 5, 6, 7, 7.8, 9, 10, 13, 16, 19.5, 22.5, 24

Vitiligo (loss of pigmentation in areas of skin. Use with B complex

W

with extra PABA internally and PABA cream topically. Also see *E. coli, Parasite General, Liver support, and Fungus freqs if necessary*) - 440, 600, 650, 2112, 880, 787, 727, 444, 20

Wart condyloma (venereal warts caused by infectious papilloma virus) - 466, 907

Warts general (also see *Papilloma and Parasites roundworms and Parasites, flukes general*) - 2720, 2489, 2170, 2127, 2008, 1800, 1600, 1500, 907, 915, 874, 727, 690, 666, 660, 644, 767, 953, 495, 466, 110

Warts 1 (apply with pad at negative 24v for 5 min at a time) - 21750

Warts papilloma (branch or stalk, use *Papilloma virus*)

Warts plantar (use 915 and 918 for 15 to 30min) - 915, 918, 20, 120, 727.5, 787, 880, 2008, 2127.5

Warts verruca (a rough surfaced, supposedly harmless, viral caused skin wart) - 495, 644, 767, 797, 877, 953, 173, 787

Wellness - 6.8, 7.83

Werlhof - 690, 452

West Nile 1 - 413, 826, 1239, 3303, 465, 841, 8410

West Nile 2 - 1385, 1115, 841, 799, 730, 697, 686, 664, 514, 498, 484, 434, 404, 313, 240

Wheat smut - 10163, 156, 375

Wheat stem rust 1 - 643

Whiplash - 20, 2720, 10000

White Blood Cell stimulation (use *Immune system stimulation*)

Whooping cough (use *Pertussis*)

Wolhynia fever (a *Rickettsia* illness, transmitted by lice, that is debilitating and conducive to relapse. Also see *Rickettsia*) - 547

Wound healing (also see *General antiseptic*) - 2720, 880, 787, 727, 220, 190, 20, 40

Y

Yeast cervical (also use *Candida*) - 788, 706, 771

Yeast general (also see *Candida. Use Parasites general, roundworm, and ascaris if no lasting relief*) - 72, 254, 375, 522, 876, 987, 414, 422, 465, 582, 787, 1016, 2222

Yeast general v - 72, 422, 582, 787, 1016, 2222, 1134, 254, 987, 986, 984, 982, 980, 974, 908, 906, 878, 876, 873, 871, 866, 865, 864, 863, 861, 778

Yellow fever (a severe viral infection which can cause damage to the liver, kidneys, heart, and entire gastrointestinal tract) - 20, 142, 178, 232, 432, 734, 1187, 733, 779, 10000

Yellow fly - 996

Yersenia pestis (aka *Bubonic plague; spread primarily by fleas on rats*) - 5120, 5000, 1600, 512, 508, 504, 500, 496, 492, 338, 333, 210, 216, 160

Yersenia pestis 1 - 337.6

Z

Zearalenone HC - 4978.71, 247.88

Zygomycosis (also called *mucormycosis; a serious fungal infection usually associated with uncontrolled diabetes mellitus or immunosuppressive drugs*) - 942, 623, 73

SENTIENT ELEMENT GUIDE

DOCOFDETOX STORE

Go To: store.docofdetox.com

CERTIFICATION COURSES

Go To: www.internationaltraininginstituteofhealth.com/certifications

PERSONALIZED TREATMENT & TRAINING

Go To: www.internationaltraininginstituteofhealth.com/ptt

ENERGY MEDICINE GUIDE

Go To: www.docofdetox.com/library